

SCCPDH RABBIT PAB

Cat.#: S219117

Product Name: Anti-SCCPDH Rabbit Polyclonal Antibody

Synonyms: NET11; CGI-49

UNIPROT ID: Q8NBX0 (Gene Accession - BC026185)

Background: SCCPDH belongs to the saccharopine dehydrogenase family. The exact function of SCCPDH remains unknown.

Immunogen: Fusion protein of human SCCPDH

Applications: ELISA, WB, IHC

Recommended Dilutions: IHC: 50-300;WB: 1000-5000;ELISA: 5000-10000

Host Species: Rabbit

Clonality: Rabbit Polyclonal

Isotype: Immunogen-specific rabbit IgG

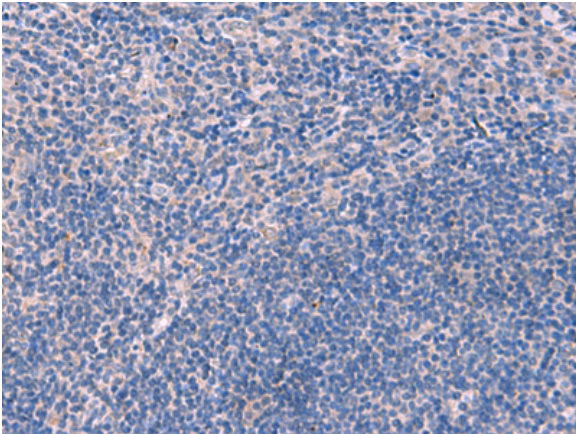
Purification: Antigen affinity purification

Species Reactivity: Human, Mouse, Rat

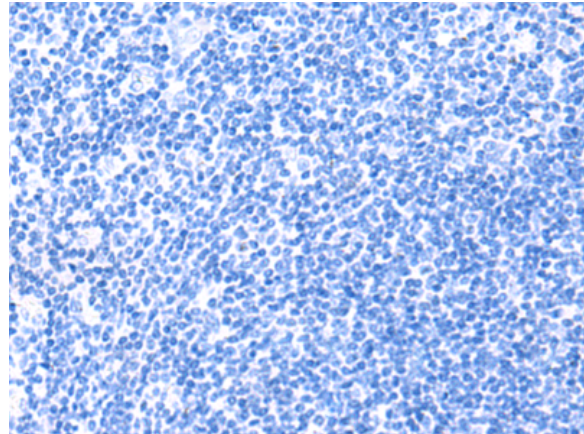
Constituents: PBS (without Mg²⁺ and Ca²⁺), pH 7.4, 150 mM NaCl, 0.05% Sodium Azide and 40% glycerol

Research Areas: Metabolism

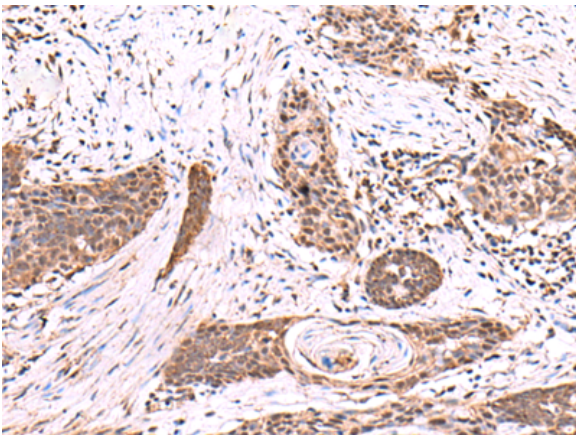
Storage & Shipping: Store at -20°C. Avoid repeated freezing and thawing



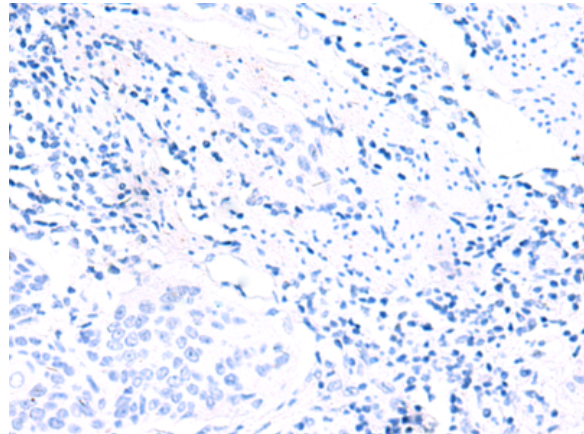
Immunohistochemistry analysis of paraffin embedded Human tonsil tissue using 219117(SCCPDH Antibody) at a dilution of 1/85(Cytoplasm or Nucleus).



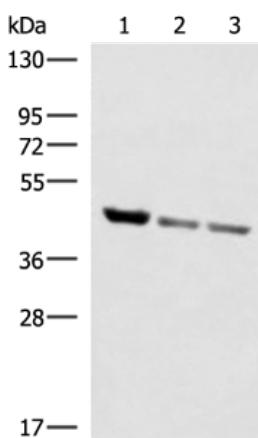
In comparison with the IHC on the left, the same paraffin-embedded Human tonsil tissue is first treated with the fusion protein and then with 219117(Anti-SCCPDH Antibody) at dilution 1/85.



The image on the left is immunohistochemistry of paraffin-embedded Human esophagus cancer tissue using 219117(Anti-SCCPDH Antibody) at a dilution of 1/85.



In comparison with the IHC on the left, the same paraffin-embedded Human esophagus cancer tissue is first treated with fusion protein and then with D225872(Anti-SCCPDH Antibody) at dilution 1/85.



Gel: 8%SDS-PAGE, Lysate: 40 µg;
 Lane 1-3: Human fetal liver tissue, PC-3 and A172 cell lysates;
 Primary antibody: 219117(SCCPDH Antibody) at dilution 1/1000;
 Secondary antibody: HRP-conjugated Goat anti rabbit IgG at 1/5000 dilution;
 Exposure time: 1 minute



Product Description

Pioneering GTPase and Oncogene Product Development since 2010
