

## SCARB1 RABBIT MAB

货号: N262871

产品全名: SCARB1 兔单克隆抗体

基因符号 CLAI; SRBI; CLA-1; SR-BI; CD36LI; HDLQTL6; Scavenging Receptor SR-BI

**UNIPROT ID:** Q8WTV0

**背景:** Receptor for different ligands such as phospholipids, cholesterol ester, lipoproteins, phosphatidylserine and apoptotic cells. Probable receptor for HDL, located in particular region of the plasma membrane, called caveolae. Facilitates the flux of free and esterified cholesterol between the cell surface and extracellular donors and acceptors, such as HDL and to a lesser extent, apoB-containing lipoproteins and modified lipoproteins.

**抗原:** Recombinant protein of human Scavenging Receptor SR-BI

**经过测试的应用:** WB,IP

**推荐稀释比:** WB: 1/500-1/1000 IP: 1/20

**种属反应性:** Rabbit

**克隆性:** Rabbit Monoclonal

**克隆编号:** R07-4H3

**分子量:** Calculated MW: 61 kDa; Observed MW: 80 kDa

**亚型:** IgG

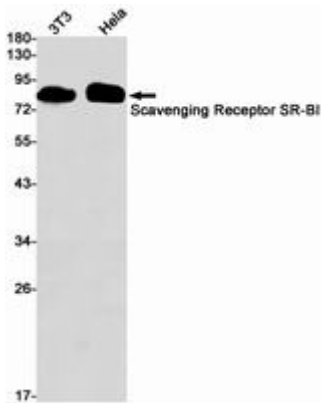
**纯化:** Affinity Purified

**种属反应性:** Human,Mouse

**成分:** PBS (without Mg<sup>2+</sup> and Ca<sup>2+</sup>), pH 7.3 containing 50% glycerol, 0.5% BSA and 0.02% sodium azide

**研究领域:** Microbiology

**储存和运输:** Store at -20°C. Avoid repeated freezing and thawing



Western blot analysis of Scavenging Receptor SRBI in 3T3, HeLa lysates using SCARBI antibody.