

SBDS RABBIT MAB

货号: N263541

产品全名: SBDS 兔单克隆抗体

基因符号 SDS; SWDS; CGI-97

UNIPROT ID: Q9Y3A5

背景: Required for the assembly of mature ribosomes and ribosome biogenesis.

抗原: A synthetic peptide of human SBDS

经过测试的应用: WB, ICC/IF, IP

推荐稀释比: WB: 1/500-1/1000 IF: 1/50-1/200 IP: 1/20

种属反应性: Rabbit

克隆性: Rabbit Monoclonal

克隆编号: R02-2G2

分子量: Calculated MW: 29 kDa; Observed MW: 29 kDa

亚型: IgG

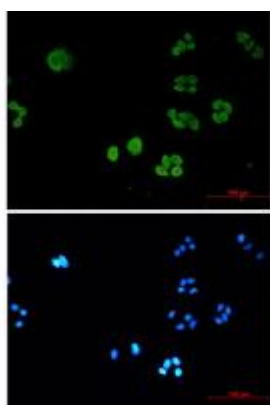
纯化: Affinity Purified

种属反应性: Human

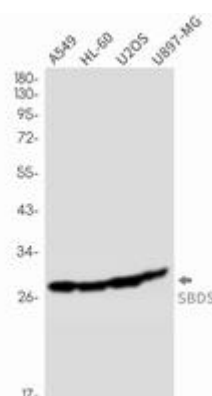
成分: PBS (without Mg²⁺ and Ca²⁺), pH 7.3 containing 50% glycerol, 0.5% BSA and 0.02% sodium azide

研究领域: Epigenetics and Nuclear Signaling

储存和运输: Store at -20°C. Avoid repeated freezing and thawing



Immunocytochemistry analysis of SBDS (green) in HeLa using SBDS antibody, and DAPI (blue)



Western blot analysis of SBDS in A549, HL-60, U2OS, U87-MG lysates using SBDS antibody.



Product Description

Pioneering GTPase and Oncogene Product Development since 2010
