

SAXO2 RABBIT PAB

货号: S222005

产品全名: SAXO2 兔多抗

基因符号: FAM154B

UNIPROT ID: Q658L1 (Gene Accession - NP_001008227)

背景: The function of this protein remains unknown.

抗原: Synthetic peptide of human SAXO2

经过测试的应用: ELISA, IHC

推荐稀释比: IHC: 40-200; ELISA: 5000-10000

种属反应性: Rabbit

克隆性: Rabbit Polyclonal

亚型: Immunogen-specific rabbit IgG

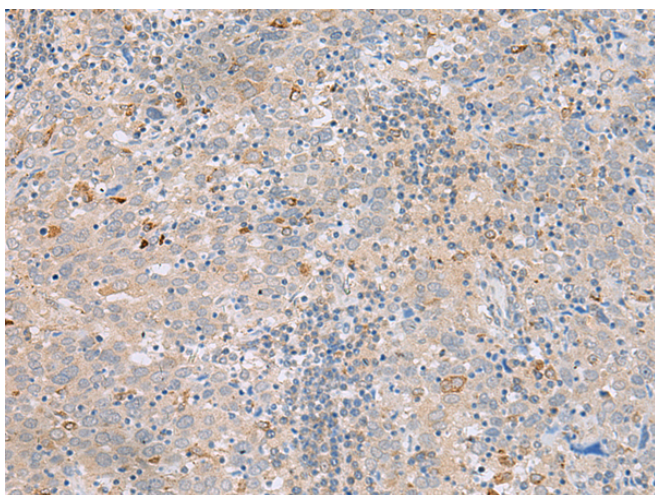
纯化: Antigen affinity purification

种属反应性: Human, Mouse

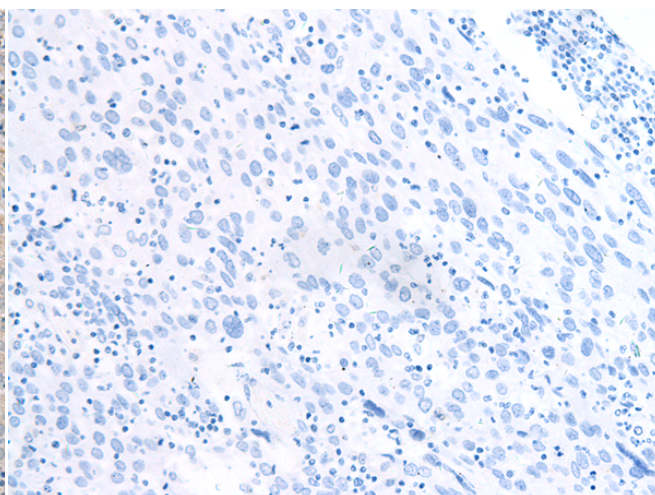
成分: PBS (without Mg²⁺ and Ca²⁺), pH 7.4, 150 mM NaCl, 0.05% Sodium Azide and 40% glycerol

研究领域: Signal Transduction

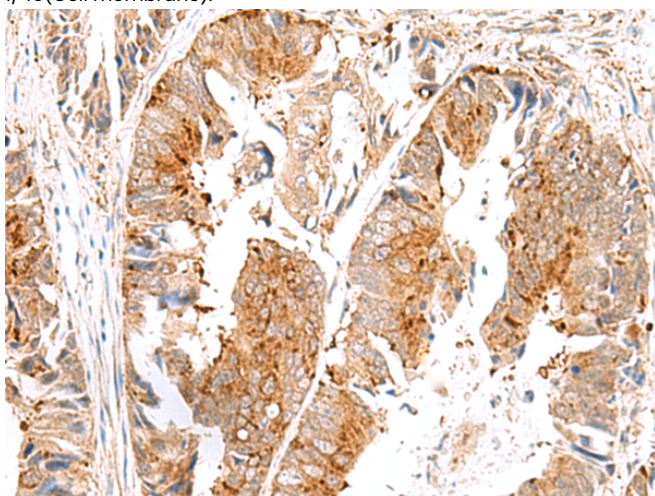
储存和运输: Store at -20°C. Avoid repeated freezing and thawing



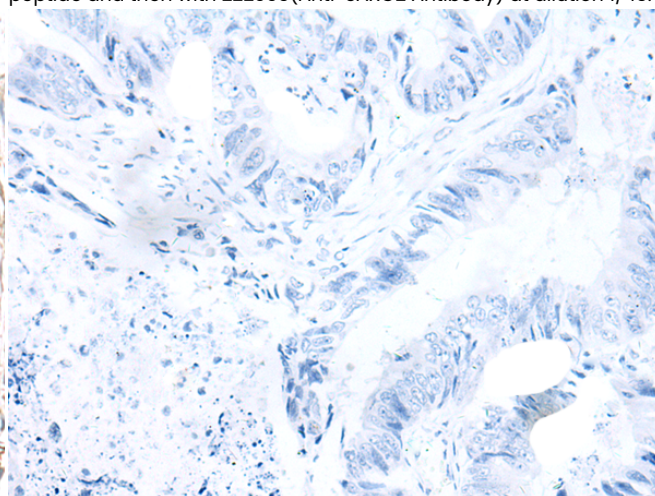
Immunohistochemistry analysis of paraffin embedded Human cervical cancer tissue using 222005(SAXO2 Antibody) at a dilution of 1/45(Cell membrane).



In comparison with the IHC on the left, the same paraffin-embedded Human cervical cancer tissue is first treated with the synthetic peptide and then with 222005(Anti-SAXO2 Antibody) at dilution 1/45.



The image on the left is immunohistochemistry of paraffin-embedded Human colorectal cancer tissue using 222005(Anti-SAXO2 Antibody) at a dilution of 1/45.



In comparison with the IHC on the left, the same paraffin-embedded Human colorectal cancer tissue is first treated with synthetic peptide and then with D263873(Anti-SAXO2 Antibody) at dilution 1/45.



Product Description

Pioneering GTPase and Oncogene Product Development since 2010
