

## SARS1 RABBIT PAB

货号: S219152

产品全名: SARS1 兔多抗

基因符号: SARS; SERS; SERRS; NEDMAS

**UNIPROT ID:** P49591 (Gene Accession - BC000716)

**背景:** This gene belongs to the class II amino-acyl tRNA family. The encoded enzyme catalyzes the transfer of L-serine to tRNA (Ser) and is related to bacterial and yeast counterparts. Multiple alternatively spliced transcript variants have been described but the biological validity of all variants is unknown. [provided by RefSeq, Jul 2010]

**抗原:** Fusion protein of human SARS1

**经过测试的应用:** ELISA, WB, IHC

**推荐稀释比:** IHC: 50-300;WB: 1000-5000;ELISA: 5000-10000

**种属反应性:** Rabbit

**克隆性:** Rabbit Polyclonal

**亚型:** Immunogen-specific rabbit IgG

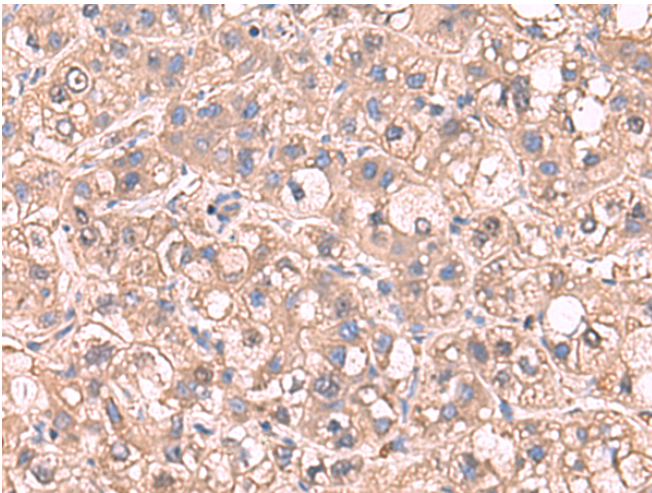
**纯化:** Antigen affinity purification

**种属反应性:** Human, Mouse, Rat

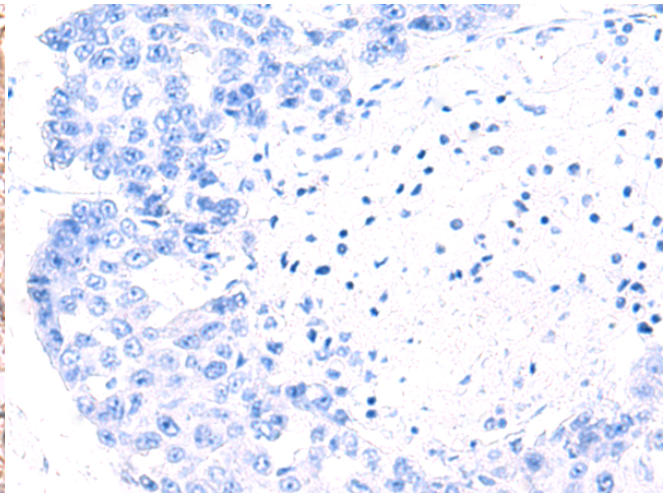
**成分:** PBS (without Mg<sup>2+</sup> and Ca<sup>2+</sup>), pH 7.4, 150 mM NaCl, 0.05% Sodium Azide and 40% glycerol

**研究领域:** Epigenetics and Nuclear Signaling

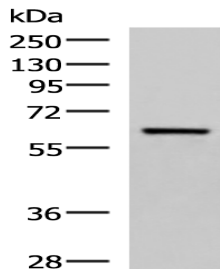
**储存和运输:** Store at -20°C. Avoid repeated freezing and thawing



Immunohistochemistry analysis of paraffin embedded Human liver cancer tissue using 219152(SARS1 Antibody) at a dilution of 1/65(Cytoplasm).



In comparison with the IHC on the left, the same paraffin-embedded Human liver cancer tissue is first treated with the fusion protein and then with 219152(Anti-SARS1 Antibody) at dilution 1/65.



Gel: 8%SDS-PAGE, Lysate: 40 µg;

Lane: Human fetal brain tissue lysate;

Primary antibody: 219152(SARS1 Antibody) at dilution 1/850;

Secondary antibody: HRP-conjugated Goat anti rabbit IgG at 1/5000 dilution;

Exposure time: 40 seconds