

SARCOMERIC ALPHA ACTININ RABBIT MAB

货号: N262868

产品全名: Sarcomeric alpha Actinin 兔单克隆抗体

基因符号 Actin binding protein; Actinin alpha 2; ACTN2; Alpha actinin 2; CMD1AA

UNIPROT ID: P35609

背景: F-actin cross-linking protein which is thought to anchor actin to a variety of intracellular structures. This is a bundling protein.

抗原: A synthetic peptide of human Sarcomeric Alpha Actinin

经过测试的应用: WB,IHC-P,IP

推荐稀释比: WB: 1/500-1/1000 IHC: 1/50-1/100 IP: 1/20

种属反应性: Rabbit

克隆性: Rabbit Monoclonal

克隆编号: R05-7J8

分子量: Calculated MW: 104 kDa; Observed MW: 104 kDa

亚型: IgG

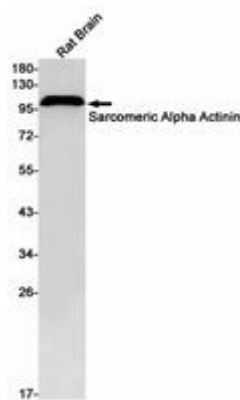
纯化: Affinity Purified

种属反应性: Human, Mouse and Rat

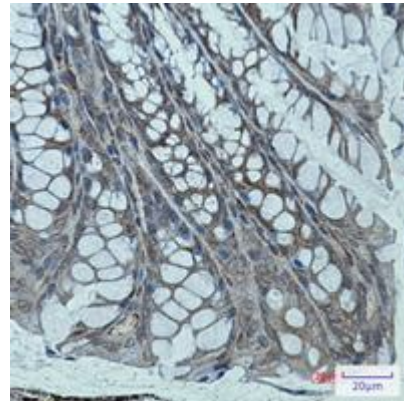
成分: PBS (without Mg²⁺ and Ca²⁺), pH 7.3 containing 50% glycerol, 0.5% BSA and 0.02% sodium azide

研究领域: Signal Transduction

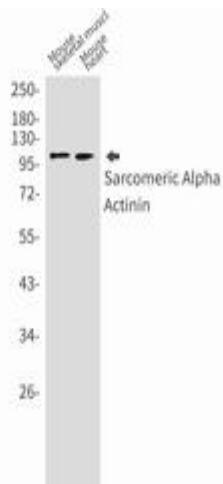
储存和运输: Store at -20°C. Avoid repeated freezing and thawing



Western blot analysis of Sarcomeric Alpha Actinin in rat Brain lysates using Sarcomeric Alpha Actinin antibody



Immunohistochemistry analysis of paraffin-embedded mouse colon using Sarcomeric alpha Actinin antibody. High-pressure and temperature Sodium Citrate pH 6.0 was used for antigen retrieval.



Western blot analysis of Sarcomeric Alpha Actinin in mouse skeletal muscle, mouse heart lysates using Sarcomeric Alpha Actinin antibody.