

## SARA RABBIT MAB

货号: N263540

产品全名: SARA 兔单克隆抗体

基因符号 NSP; SARA; MADHIP; SMADIP; PPP1R173

**UNIPROT ID:** O95405

背景: Early endosomal protein that functions to recruit SMAD2/SMAD3 to intracellular membranes and to the TGF-beta receptor.

抗原: A synthetic peptide of human SARA

经过测试的应用: WB,IHC-P,IP

推荐稀释比: WB: 1/500-1/1000 IHC: 1/50-1/100 IP: 1/20

种属反应性: Rabbit

克隆性: Rabbit Monoclonal

克隆编号: R01-0A4

分子量: Calculated MW: 156 kDa; Observed MW: 156 kDa

亚型: IgG

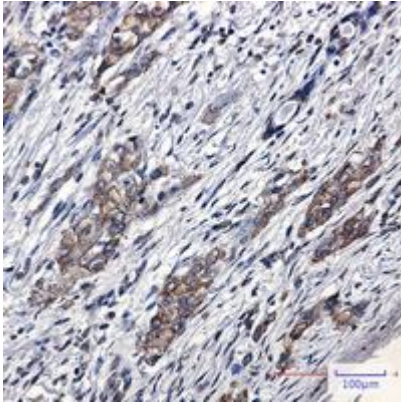
纯化: Affinity Purified

种属反应性: Human

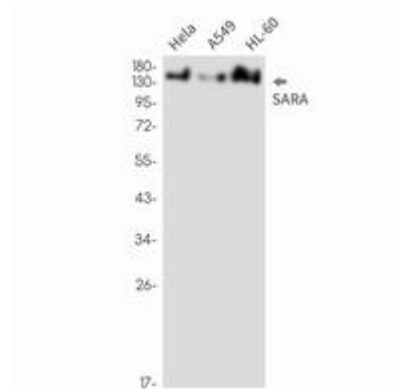
成分: PBS (without Mg<sup>2+</sup> and Ca<sup>2+</sup>), pH 7.3 containing 50% glycerol, 0.5% BSA and 0.02% sodium azide

研究领域: Signal Transduction

储存和运输: Store at -20°C. Avoid repeated freezing and thawing



Immunohistochemistry analysis of paraffin-embedded Human lung cancer using SARA antibody. High-pressure and temperature Sodium Citrate pH 6.0 was used for antigen retrieval.



Western blot analysis of SARA in HeLa, A549, HL-60 lysates using SARA antibody.