

SAR1B RABBIT PAB

货号: S216351

产品全名: SAR1B 兔多抗

基因符号: ANDD; CMRD; GTBPB; SARA2

UNIPROT ID: Q9Y6B6 (Gene Accession - BC002847)

背景: The protein encoded by this gene is a small GTPase that acts as a homodimer. The encoded protein is activated by the guanine nucleotide exchange factor PREB and is involved in protein transport from the endoplasmic reticulum to the Golgi. This protein is part of the COPII coat complex. Defects in this gene are a cause of chylomicron retention disease (CMRD), also known as Anderson disease (ANDD). Two transcript variants encoding the same protein have been found for this gene.

抗原: Fusion protein of human SAR1B

经过测试的应用: ELISA, IHC

推荐稀释比: IHC: 25-100; ELISA: 1000-2000

种属反应性: Rabbit

克隆性: Rabbit Polyclonal

亚型: Immunogen-specific rabbit IgG

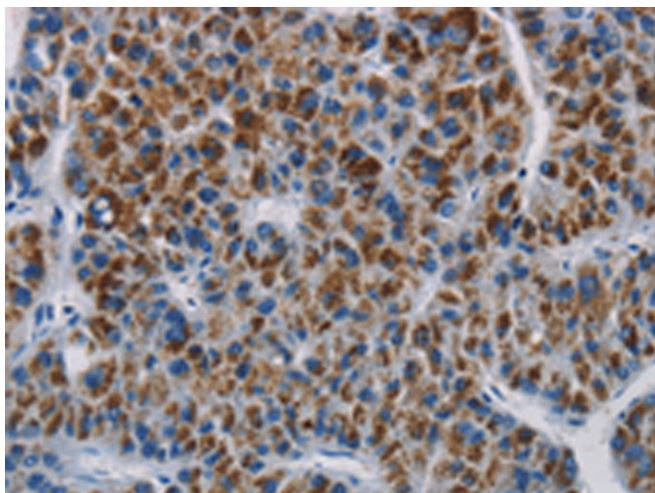
纯化: Antigen affinity purification

种属反应性: Human, Mouse, Rat

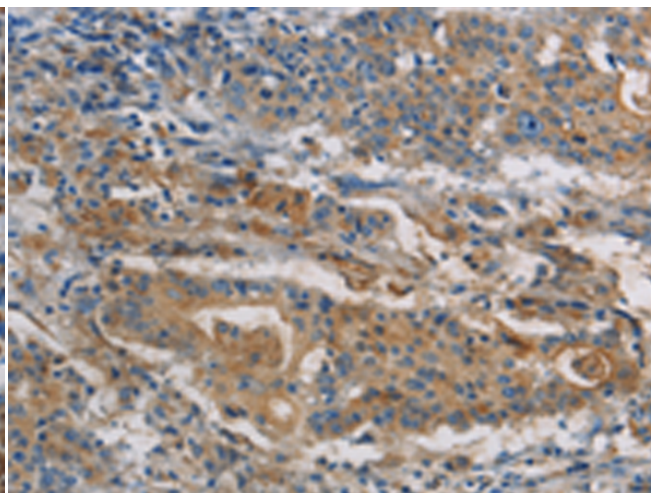
成分: PBS (without Mg²⁺ and Ca²⁺), pH 7.4, 150 mM NaCl, 0.05% Sodium Azide and 40% glycerol

研究领域: Signal Transduction

储存和运输: Store at -20°C. Avoid repeated freezing and thawing



Immunohistochemistry analysis of paraffin-embedded Human liver cancer tissue using 216351(SAR1B Antibody) at a dilution of 1/20(Cytoplasm).



Immunohistochemistry analysis of paraffin-embedded Human gastric cancer tissue using 216351(Anti-SAR1B Antibody) at a dilution of 1/20.