

## SAP30L RABBIT PAB

货号: S219234

产品全名: SAP30L 兔多抗

基因符号 NS4ATP2

**UNIPROT ID:** Q9HAJ7 (Gene Accession - BC009829)

背景: Involved in the functional recruitment of the class I Sin3-histone deacetylase complex (HDAC) to the nucleolus.

抗原: Fusion protein of human SAP30L

经过测试的应用: ELISA, IHC

推荐稀释比: IHC: 100-200; ELISA: 5000-10000

种属反应性: Rabbit

克隆性: Rabbit Polyclonal

亚型: Immunogen-specific rabbit IgG

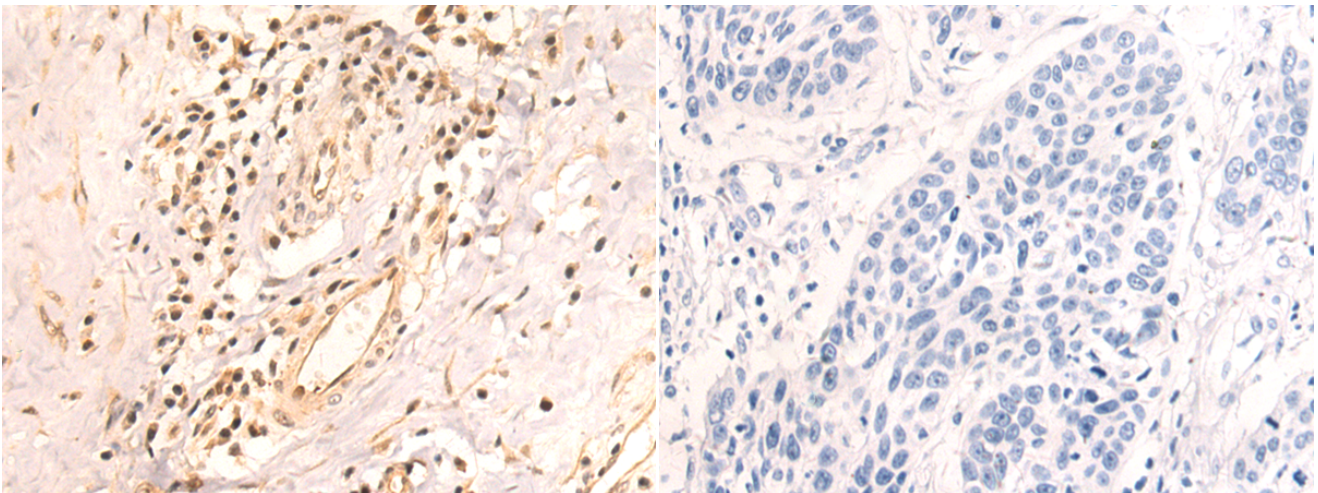
纯化: Antigen affinity purification

种属反应性: Human, Mouse

成分: PBS (without Mg<sup>2+</sup> and Ca<sup>2+</sup>), pH 7.4, 150 mM NaCl, 0.05% Sodium Azide and 40% glycerol

研究领域: Epigenetics and Nuclear Signaling

储存和运输: Store at -20°C. Avoid repeated freezing and thawing



Immunohistochemistry analysis of paraffin embedded Human esophagus cancer tissue using 219234(SAP30L Antibody) at a dilution of 1/115(Nucleus).

In comparison with the IHC on the left, the same paraffin-embedded Human esophagus cancer tissue is first treated with the fusion protein and then with 219234(Anti-SAP30L Antibody) at dilution 1/115.