

## SAMSNI RABBIT PAB

货号: S219090

产品全名: SAMSNI 兔多抗

基因符号: SLY2; HACSI; NASH1; SASH2; SH3D6B

**UNIPROT ID:** Q9NSI8 (Gene Accession - BC029112)

**背景:** SAMSNI is a member of a novel gene family of putative adaptors and scaffold proteins containing SH3 and SAM (sterile alpha motif) domains (Claudio et al., 2001 [PubMed 11536050]).

**抗原:** Fusion protein of human SAMSNI

**经过测试的应用:** ELISA, WB, IHC

**推荐稀释比:** IHC: 50-300; WB: 1000-5000; ELISA: 5000-10000

**种属反应性:** Rabbit

**克隆性:** Rabbit Polyclonal

**亚型:** Immunogen-specific rabbit IgG

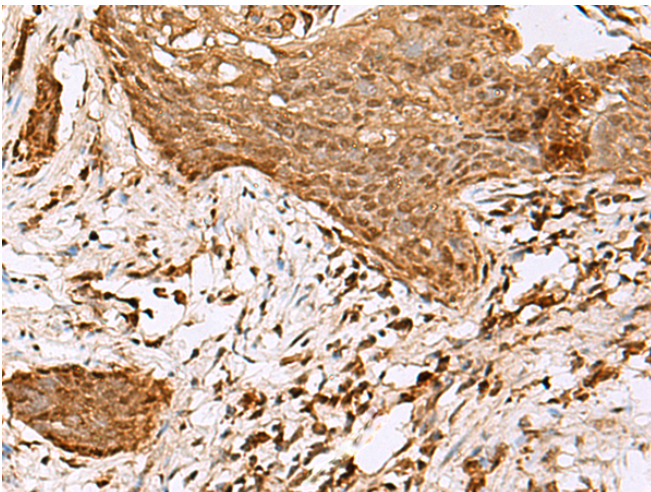
**纯化:** Antigen affinity purification

**种属反应性:** Human, Mouse

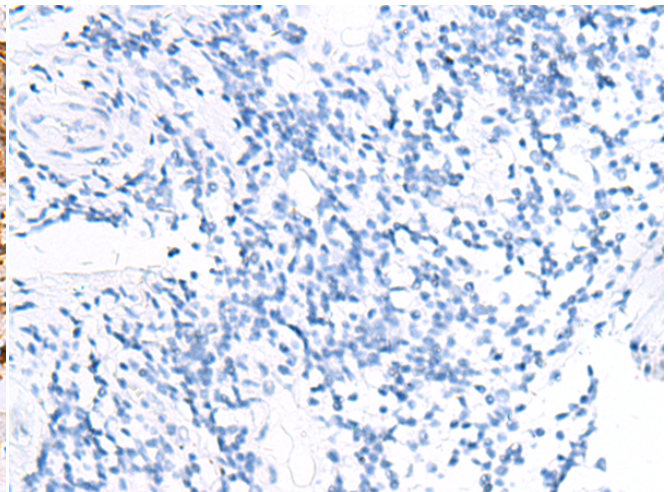
**成分:** PBS (without Mg<sup>2+</sup> and Ca<sup>2+</sup>), pH 7.4, 150 mM NaCl, 0.05% Sodium Azide and 40% glycerol

**研究领域:** Stem Cells

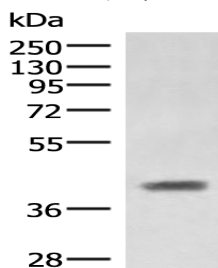
**储存和运输:** Store at -20°C. Avoid repeated freezing and thawing



Immunohistochemistry analysis of paraffin embedded Human esophagus cancer tissue using 219090 (SAMSNI Antibody) at a dilution of 1/80 (Nucleus).



In comparison with the IHC on the left, the same paraffin-embedded Human esophagus cancer tissue is first treated with the fusion protein and then with 219090 (Anti-SAMSNI Antibody) at dilution 1/80.



Gel: 8% SDS-PAGE, Lysate: 40 µg;

Lane: Mouse liver tissue lysate;

Primary antibody: 219090 (SAMSNI Antibody) at dilution 1/1000;

Secondary antibody: HRP-conjugated Goat anti rabbit IgG at 1/5000 dilution;

Exposure time: 1 second