

SAMD9L RABBIT PAB

货号: S220876

产品全名: SAMD9L 兔多抗

基因符号: UEFI; ATXPC; DRIF2; SCA49; C7orf6; M7MLS1

UNIPROT ID: Q8IVG5 (Gene Accession - NP_689916)

背景: This gene encodes a cytoplasmic protein that acts as a tumor suppressor but also plays a key role in cell proliferation and the innate immune response to viral infection. The encoded protein contains an N-terminal sterile alpha motif domain. Naturally occurring mutations in this gene are associated with myeloid disorders such as juvenile myelomonocytic leukemia, acute myeloid leukemia, and myelodysplastic syndrome. Naturally occurring mutations are also associated with hepatitis-B related hepatocellular carcinoma, normophosphatemic familial tumoral calcinosis, and ataxia-pancytopenia syndrome. [provided by RefSeq, Apr 2017]

抗原: Synthetic peptide of human SAMD9L

经过测试的应用: ELISA, IHC

推荐稀释比: IHC: 50-200; ELISA: 5000-10000

种属反应性: Rabbit

克隆性: Rabbit Polyclonal

亚型: Immunogen-specific rabbit IgG

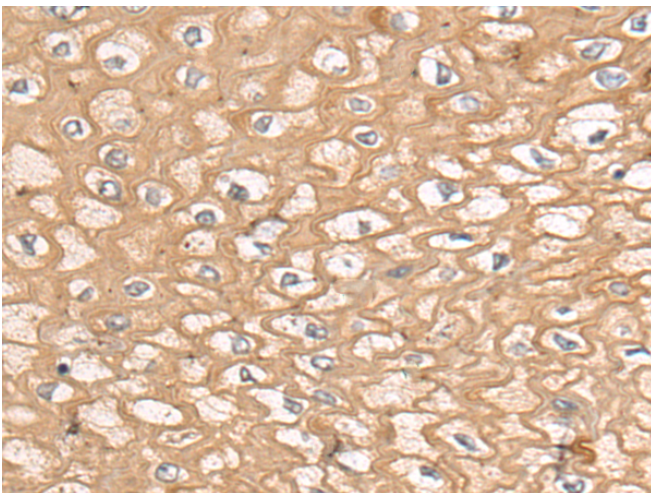
纯化: Antigen affinity purification

种属反应性: Human

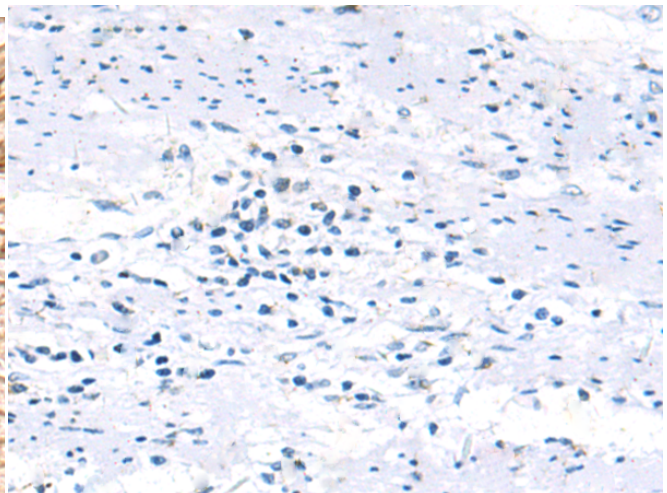
成分: PBS (without Mg²⁺ and Ca²⁺), pH 7.4, 150 mM NaCl, 0.05% Sodium Azide and 40% glycerol

研究领域: Cell Biology

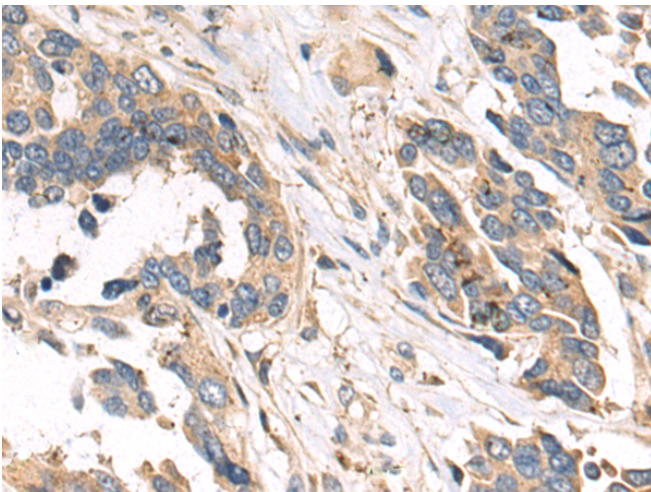
储存和运输: Store at -20°C. Avoid repeated freezing and thawing



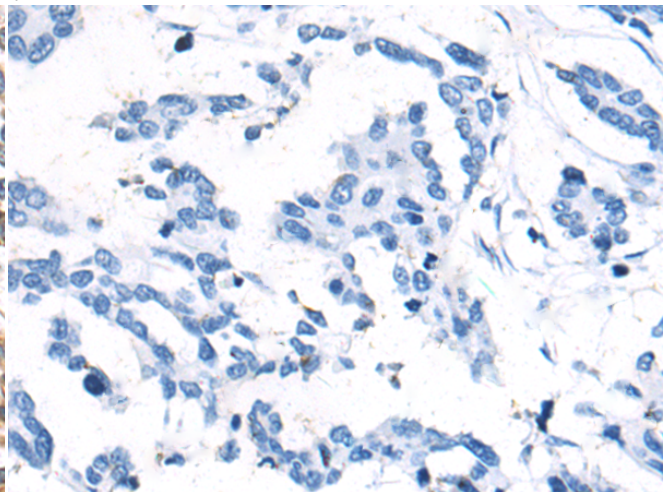
Immunohistochemistry analysis of paraffin embedded Human esophagus cancer tissue using 220876(SAMD9L Antibody) at a dilution of 1/50(Cytoplasm).



In comparison with the IHC on the left, the same paraffin-embedded Human esophagus cancer tissue is first treated with the synthetic peptide and then with 220876(Anti-SAMD9L Antibody) at dilution 1/50.



The image on the left is immunohistochemistry of paraffin-embedded Human colorectal cancer tissue using 220876(Anti-SAMD9L Antibody) at a dilution of 1/50.



In comparison with the IHC on the left, the same paraffin-embedded Human colorectal cancer tissue is first treated with synthetic peptide and then with D262166(Anti-SAMD9L Antibody) at dilution 1/50.



Product Description

Pioneering GTPase and Oncogene Product Development since 2010
