

SAMD9 RABBIT PAB

货号: S220875

产品全名: SAMD9 兔多抗

基因符号: NFTC; OEF1; OEF2; DRIF1; C7orf5

UNIPROT ID: Q5K651 (Gene Accession - NP_001180236)

背景: This gene encodes a sterile alpha motif domain-containing protein. The encoded protein localizes to the cytoplasm and may play a role in regulating cell proliferation and apoptosis. Mutations in this gene are the cause of normophosphatemic familial tumoral calcinosis. Alternate splicing results in multiple transcript variants that encode the same protein.

抗原: Synthetic peptide of human SAMD9

经过测试的应用: ELISA, IHC

推荐稀释比: IHC: 25-100; ELISA: 1000-2000

种属反应性: Rabbit

克隆性: Rabbit Polyclonal

亚型: Immunogen-specific rabbit IgG

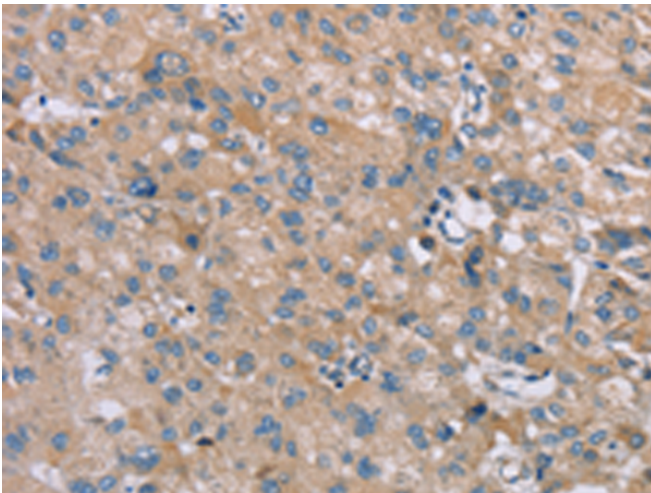
纯化: Antigen affinity purification

种属反应性: Human

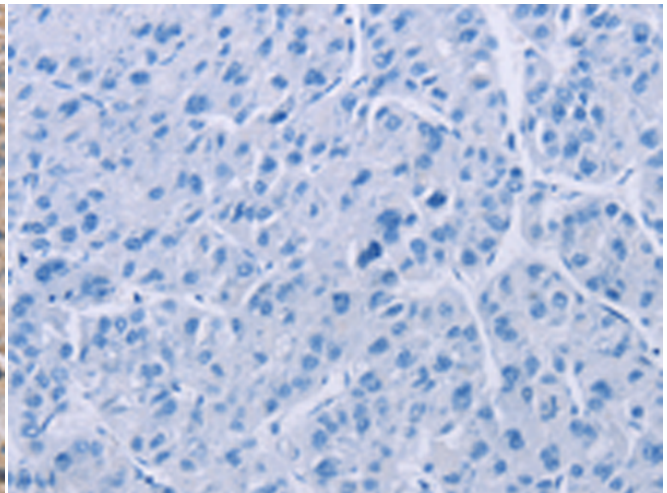
成分: PBS (without Mg²⁺ and Ca²⁺), pH 7.4, 150 mM NaCl, 0.05% Sodium Azide and 40% glycerol

研究领域: Cell Biology

储存和运输: Store at -20°C. Avoid repeated freezing and thawing



Immunohistochemistry analysis of paraffin embedded Human liver cancer tissue using 220875(SAMD9 Antibody) at a dilution of 1/35(Cytoplasm).



In comparison with the IHC on the left, the same paraffin-embedded Human liver cancer tissue is first treated with the synthetic peptide and then with 220875(Anti-SAMD9 Antibody) at dilution 1/35.