

SAMD4B RABBIT PAB

货号: S220874

产品全名: SAMD4B 兔多抗

基因符号: SMGB; hSmaug2

UNIPROT ID: Q5PRF9 (Gene Accession - NP_060498)

背景: SMGB; hSmaug2

抗原: Synthetic peptide of human SAMD4B

经过测试的应用: ELISA, IHC

推荐稀释比: IHC: 25-100; ELISA: 1000-2000

种属反应性: Rabbit

克隆性: Rabbit Polyclonal

亚型: Immunogen-specific rabbit IgG

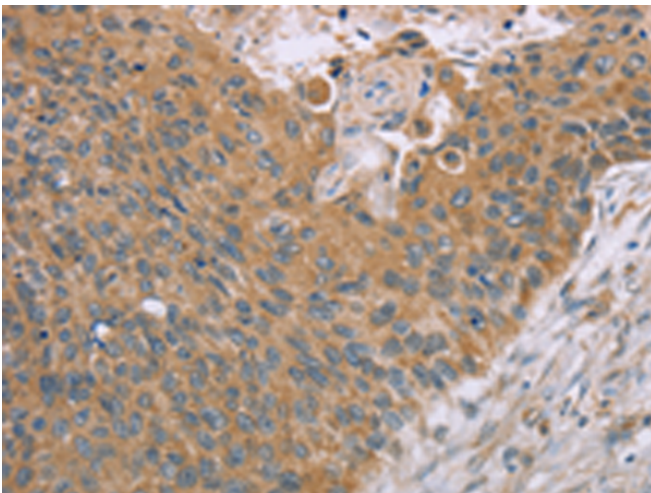
纯化: Antigen affinity purification

种属反应性: Human, Mouse

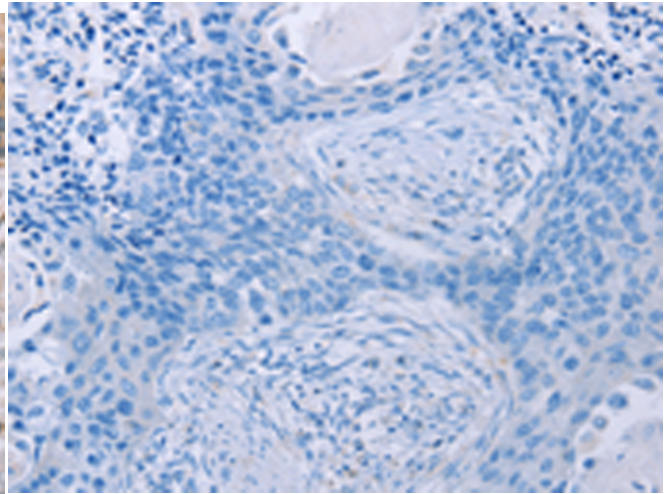
成分: PBS (without Mg²⁺ and Ca²⁺), pH 7.4, 150 mM NaCl, 0.05% Sodium Azide and 40% glycerol

研究领域: Cell Biology

储存和运输: Store at -20°C. Avoid repeated freezing and thawing



Immunohistochemistry analysis of paraffin embedded Human esophagus cancer tissue using 220874(SAMD4B Antibody) at a dilution of 1/40(Cytoplasm).



In comparison with the IHC on the left, the same paraffin-embedded Human esophagus cancer tissue is first treated with the synthetic peptide and then with 220874(Anti-SAMD4B Antibody) at dilution 1/40.