

## SAMD4A RABBIT PAB

货号: S220873

产品全名: SAMD4A 兔多抗

基因符号 SMG; SMGA; SAMD4; SMAUG; SMAUG1

**UNIPROT ID:** Q9UPU9 (Gene Accession - NP\_001155048 )

背景: Sterile alpha motifs (SAMs) in proteins such as SAMD4A are part of an RNA-binding domain that functions as a posttranscriptional regulator by binding to an RNA sequence motif known as the Smaug recognition element, which was named after the Drosophila Smaug protein.

抗原: Synthetic peptide of human SAMD4A

经过测试的应用: ELISA, IHC

推荐稀释比: IHC: 25-100; ELISA: 1000-2000

种属反应性: Rabbit

克隆性: Rabbit Polyclonal

亚型: Immunogen-specific rabbit IgG

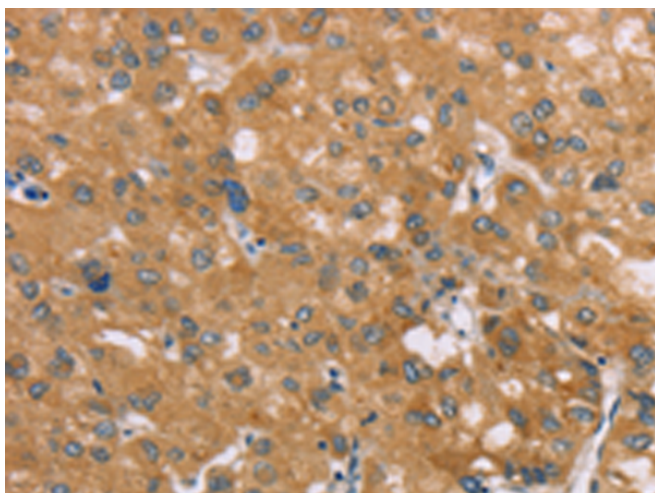
纯化: Antigen affinity purification

种属反应性: Human

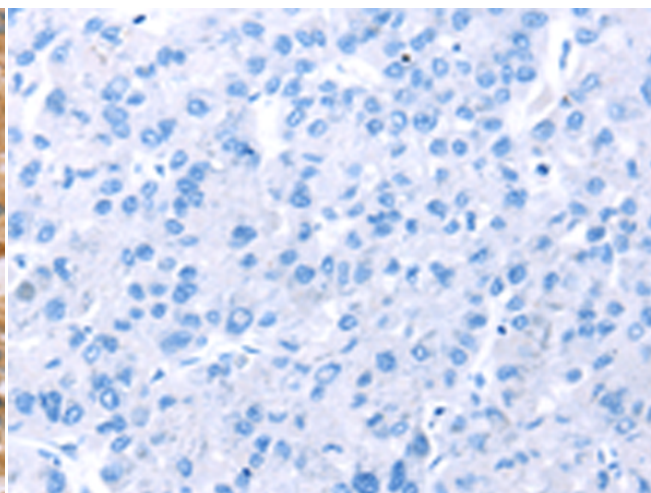
成分: PBS (without Mg<sup>2+</sup> and Ca<sup>2+</sup>), pH 7.4, 150 mM NaCl, 0.05% Sodium Azide and 40% glycerol

研究领域: Epigenetics and Nuclear Signaling

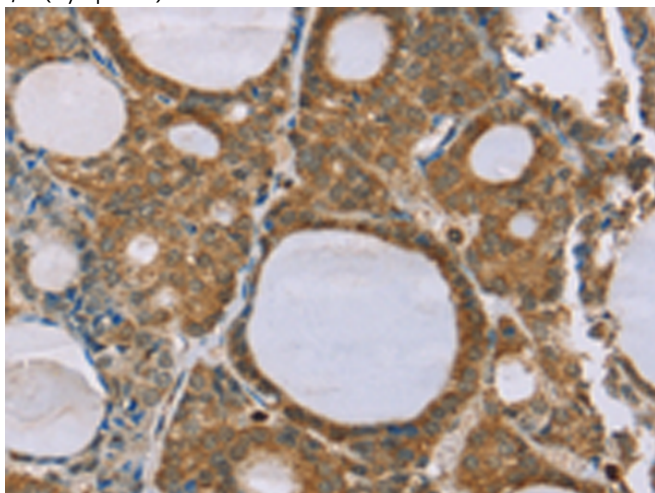
储存和运输: Store at -20°C. Avoid repeated freezing and thawing



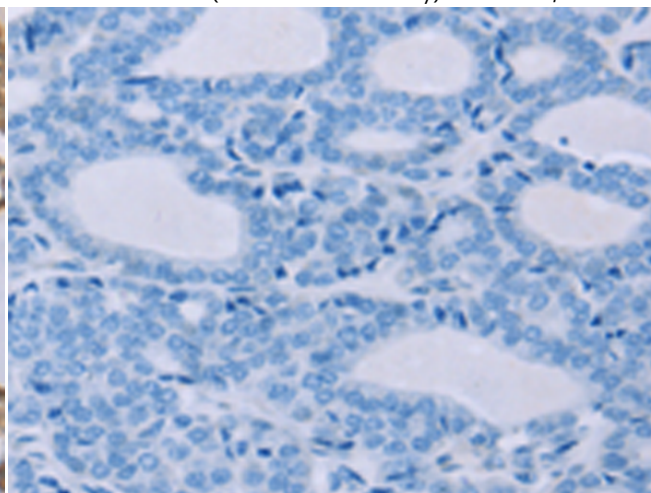
Immunohistochemistry analysis of paraffin embedded Human liver cancer tissue using 220873(SAMD4A Antibody) at a dilution of 1/35(Cytoplasm).



In comparison with the IHC on the left, the same paraffin-embedded Human liver cancer tissue is first treated with the synthetic peptide and then with 220873(Anti-SAMD4A Antibody) at dilution 1/35.



The image on the left is immunohistochemistry of paraffin-embedded Human thyroid cancer tissue using 220873(Anti-SAMD4A Antibody) at a dilution of 1/35.



In comparison with the IHC on the left, the same paraffin-embedded Human thyroid cancer tissue is first treated with synthetic peptide and then with D262152(Anti-SAMD4A Antibody) at dilution 1/35.



# Product Description

Pioneering GTPase and Oncogene Product Development since 2010

---