

## SAE1 RABBIT MAB

货号: N262864

产品全名: SAE1 兔单克隆抗体

基因符号 SAE1; AOS1; SUA1; UBLE1A; SUMO-activating enzyme subunit 1; Ubiquitin-like 1-activating enzyme E1A

**UNIPROT ID:** Q9UBE0

背景: The heterodimer acts as a E1 ligase for SUMO1, SUMO2, SUMO3, and probably SUMO4. It mediates ATP-dependent activation of SUMO proteins followed by formation of a thioester bond between a SUMO protein and a conserved active site cysteine residue on UBA2/SAE2.

抗原: A synthetic peptide of human SAE1

经过测试的应用: WB, ICC/IF

推荐稀释比: WB: 1/500-1/1000 IF: 1/50-1/200

种属反应性: Rabbit

克隆性: Rabbit Monoclonal

克隆编号: R02-013

分子量: Calculated MW: 38 kDa; Observed MW: 38 kDa

亚型: IgG

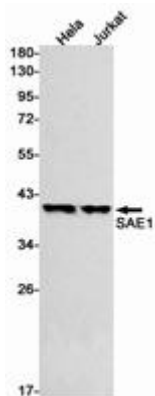
纯化: Affinity Purified

种属反应性: Human

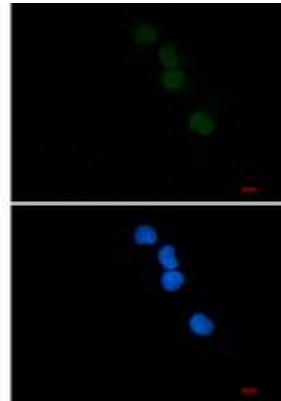
成分: PBS (without Mg<sup>2+</sup> and Ca<sup>2+</sup>), pH 7.3 containing 50% glycerol, 0.5% BSA and 0.02% sodium azide

研究领域: Cell Biology

储存和运输: Store at -20°C. Avoid repeated freezing and thawing



Western blot analysis of SAE1 in HeLa, Jurkat lysates using SAE1 antibody.



Immunocytochemistry analysis of SAE1 (green) in HeLa using SAE1 antibody, and DAPI (blue).