

SA2 RABBIT PAB

货号: N225905

产品全名: SA2 兔多抗

基因符号 SA 2; SA-2; SA2; SCC3 homolog 2; SCC3B; stag2; Stromal antigen 2

UNIPROT ID: Q8N3U4

背景: Component of cohesin complex, a complex required for the cohesion of sister chromatids after DNA replication. The cohesin complex apparently forms a large proteinaceous ring within which sister chromatids can be trapped. At anaphase, the complex is cleaved and dissociates from chromatin, allowing sister chromatids to segregate.

抗原: A synthesized peptide derived from human SA2

经过测试的应用: WB,IHC-P,ICC/IF,FC

推荐稀释比: WB: 1/500-1/1000 IHC: 1/50-1/100 IF: 1/50-1/200 FC: 1/50-1/100

种属反应性: Rabbit

克隆性: Rabbit Polyclonal

分子量: Calculated MW: 141 kDa; Observed MW: 141 kDa

亚型: IgG

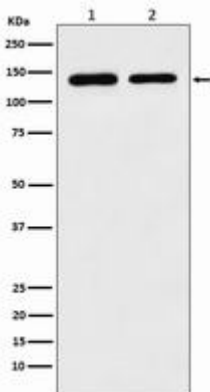
纯化: Affinity Chromatography

种属反应性: Human, Mouse and Rat

成分: PBS (without Mg²⁺ and Ca²⁺), pH 7.3 containing 50% glycerol, 0.5% BSA and 0.02% sodium azide

研究领域: Cell Biology

储存和运输: Store at -20°C. Avoid repeated freezing and thawing



Western blot analysis of SA2 in (1) K562 lysates; (2) Raw264.7 lysates using SA2 antibody.



Product Description

Pioneering GTPase and Oncogene Product Development since 2010
