

SA2 RABBIT PAB

货号: N226002

产品全名: SA2 兔多抗

基因符号 SA 2; SA-2; SA2; SCC3 homolog 2; SCC3B; stag2; Stromal antigen 2

UNIPROT ID: Q8N3U4

背景: Component of cohesin complex, a complex required for the cohesion of sister chromatids after DNA replication. The cohesin complex apparently forms a large proteinaceous ring within which sister chromatids can be trapped. At anaphase, the complex is cleaved and dissociates from chromatin, allowing sister chromatids to segregate.

抗原: Recombinant protein of human SA2

经过测试的应用: WB,IHC-F,IHC-P,ICC/IF,FC

推荐稀释比: WB: 1/500-1/1000 IHC: 1/50-1/100 IF: 1/50-1/200 FC: 1/50-1/100

种属反应性: Rabbit

克隆性: Rabbit Polyclonal

分子量: Calculated MW: 141 kDa; Observed MW: 141 kDa

亚型: IgG

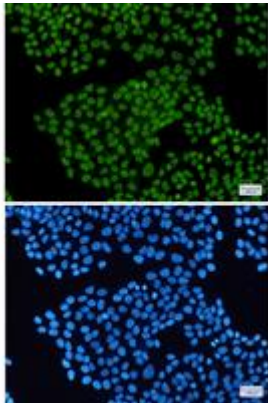
纯化: Affinity Purified

种属反应性: Human, Mouse and Rat

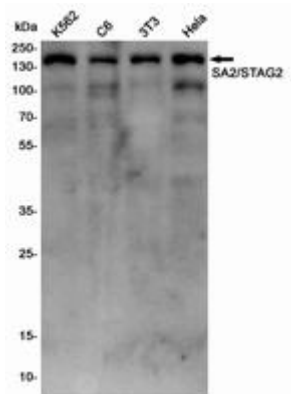
成分: PBS (without Mg²⁺ and Ca²⁺), pH 7.3 containing 50% glycerol, 0.5% BSA and 0.02% sodium azide

研究领域: Cell Biology

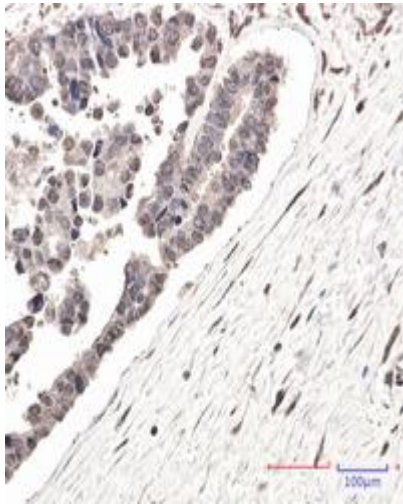
储存和运输: Store at -20°C. Avoid repeated freezing and thawing



Immunocytochemistry analysis of SA2 (green) in HeLa using SA2 antibody, and DAPI (blue)



Western blot analysis of SA2/STAG2 in K562, C6, 3T3, HeLa lysates using SA2 antibody.



Immunohistochemistry analysis of paraffin-embedded Human Cholangiocarcinoma using SA2 antibody. High-pressure and temperature Sodium Citrate pH 6.0 was used for antigen retrieval.