

S6K2 RABBIT MAB

货号: N262661

产品全名: S6K2 兔单克隆抗体

基因符号 RPS6KB2; STK14B; Ribosomal protein S6 kinase beta-2; S6K-beta-2; S6K2; 70 kDa ribosomal protein S6 kinase 2; P70S6K2; p70-S6K 2; S6 kinase-related kinase; SRK; Serine/threonine-protein kinase 14B; p70 ribosomal S6 kinase beta; S6K-beta; p70

UNIPROT ID: Q9UBS0

背景: Phosphorylates specifically ribosomal protein S6.

抗原: Recombinant protein of human P70 S6 Kinase beta

经过测试的应用: WB,IHC-F,IHC-P,ICC/IF

推荐稀释比: WB: 1/500-1/1000 IHC: 1/50-1/100 IF: 1/50-1/200

种属反应性: Rabbit

克隆性: Rabbit Monoclonal

克隆编号: R04-9C1

分子量: Calculated MW: 53 kDa; Observed MW: 53 kDa

亚型: IgG

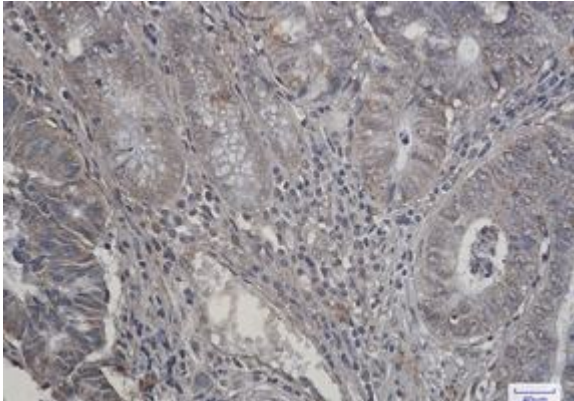
纯化: Affinity Purified

种属反应性: Human, Mouse and Rat

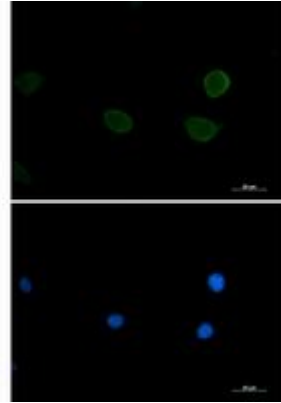
成分: PBS (without Mg²⁺ and Ca²⁺), pH 7.3 containing 50% glycerol, 0.5% BSA and 0.02% sodium azide

研究领域: Signal Transduction

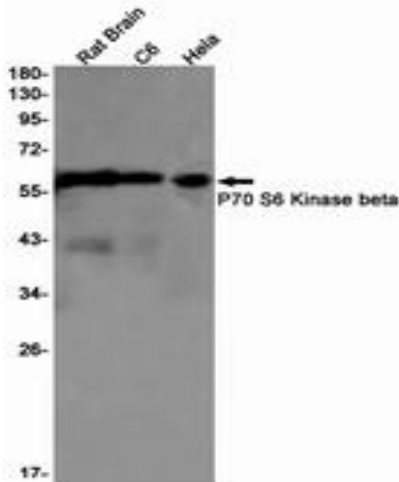
储存和运输: Store at -20°C. Avoid repeated freezing and thawing



Immunohistochemistry analysis of paraffin-embedded Human colon cancer tissue using P70 S6 Kinase beta antibody. High-pressure and temperature Sodium Citrate pH 6.0 was used for antigen retrieval.



Immunocytochemistry analysis of S6K2 (green) in 3T3 using S6K2 antibody, and DAPI (blue).



Western blot analysis of P70 S6 Kinase beta in rat Brain, C6, HeLa lysates using P70 S6 Kinase beta antibody.