

## S1PR3 RABBIT PAB

货号: S220246

产品全名: S1PR3 兔多抗

基因符号: EDG3; LPB3; SIP3; EDG-3

**UNIPROT ID:** Q99500 (Gene Accession - NP\_005217)

**背景:** This gene encodes a member of the EDG family of receptors, which are G protein-coupled receptors. This protein has been identified as a functional receptor for sphingosine 1-phosphate and likely contributes to the regulation of angiogenesis and vascular endothelial cell function. Receptor for the lysosphingolipid sphingosine 1-phosphate (SIP). SIP is a bioactive lysophospholipid that elicits diverse physiological effect on most types of cells and tissues. When expressed in rat HTC4 hepatoma cells, is capable of mediating SIP-induced cell proliferation and suppression of apoptosis.

**抗原:** Synthetic peptide of human S1PR3

**经过测试的应用:** ELISA, WB, IHC

**推荐稀释比:** IHC: 25-100;WB: 1000-5000;ELISA: 2000-10000

**种属反应性:** Rabbit

**克隆性:** Rabbit Polyclonal

**亚型:** Immunogen-specific rabbit IgG

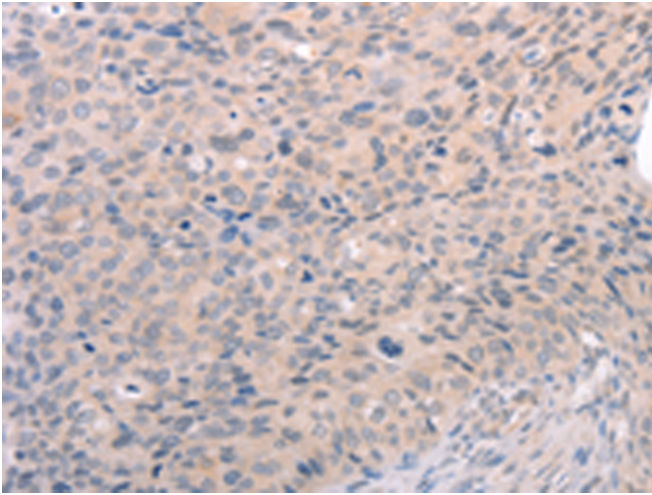
**纯化:** Antigen affinity purification

**种属反应性:** Human, Mouse

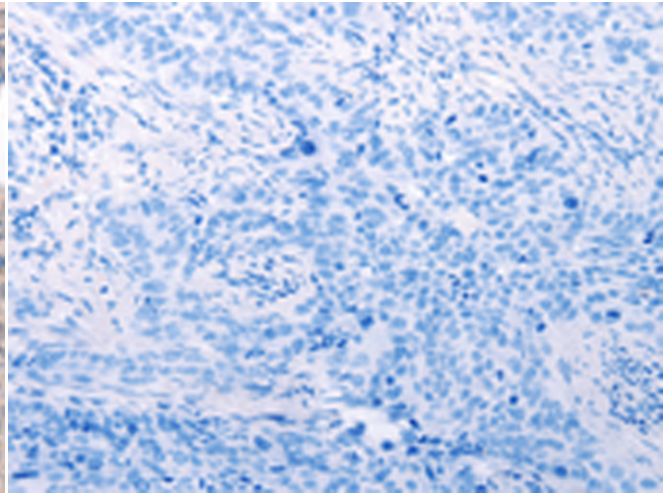
**成分:** PBS (without Mg<sup>2+</sup> and Ca<sup>2+</sup>), pH 7.4, 150 mM NaCl, 0.05% Sodium Azide and 40% glycerol

**研究领域:** Signal Transduction, Cardiovascular

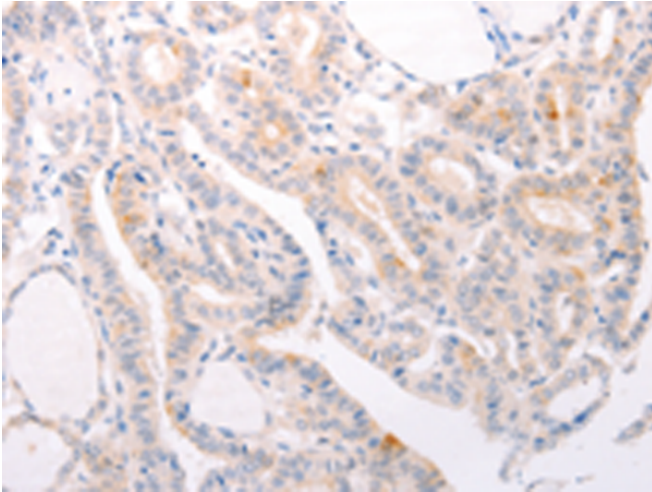
**储存和运输:** Store at -20°C. Avoid repeated freezing and thawing



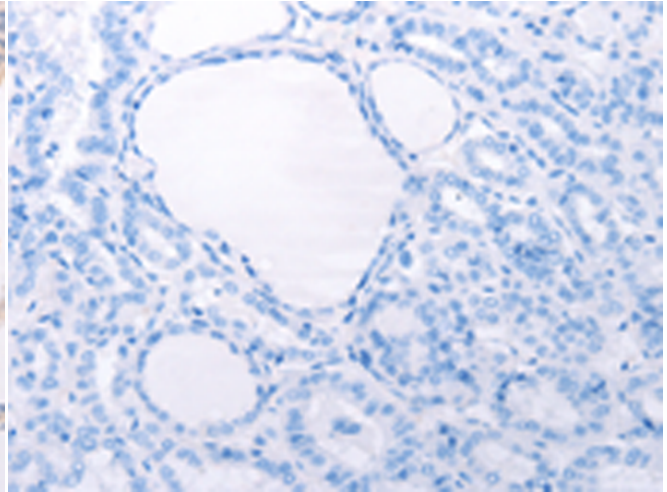
Immunohistochemistry analysis of paraffin embedded Human cervical cancer tissue using 220246(SIPR3 Antibody) at a dilution of 1/30(Cytoplasm).



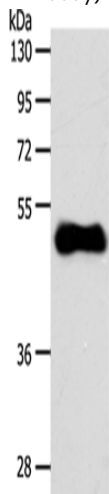
In comparison with the IHC on the left, the same paraffin-embedded Human cervical cancer tissue is first treated with the synthetic peptide and then with 220246(Anti-SIPR3 Antibody) at dilution 1/30.



The image on the left is immunohistochemistry of paraffin-embedded Human thyroid cancer tissue using 220246(Anti-SIPR3 Antibody) at a dilution of 1/30.



In comparison with the IHC on the left, the same paraffin-embedded Human thyroid cancer tissue is first treated with synthetic peptide and then with D261196(Anti-SIPR3 Antibody) at dilution 1/30.



Gel: 10%SDS-PAGE, Lysate: 40 µg;  
Lane: Human fetal brain tissue;  
Primary antibody: 220246(SIPR3 Antibody) at dilution 1/700;  
Secondary antibody: Goat anti rabbit IgG at 1/8000 dilution;  
Exposure time: 20 seconds



# Product Description

Pioneering GTPase and Oncogene Product Development since 2010

---