

## S100B RABBIT MAB

货号: N262858

产品全名: S100B 兔单克隆抗体

基因符号 NEF; Protein S100 B; Protein S100-B; S 100 calcium binding protein beta chain; S 100 protein beta chain; S-100 protein beta chain; S-100 protein subunit beta; S100; S100 calcium binding protein beta (neural); S100 calcium-binding protein B; S100 protein beta chain; S100B; S100B\_HUMAN; S100beta.

**UNIPROT ID:** P04271

**背景:** Despite their relatively small size (8–12 kDa) and uncomplicated architecture, S100 proteins regulate a variety of cellular processes such as cell growth and motility, cell cycle progression, transcription, and differentiation. To date, 25 members have been identified, including S100A1–S100A18, trichohyalin, filaggrin, repetin, S100P, and S100Z, making it the largest group in the EF-hand, calcium-binding protein family.

**抗原:** A synthetic peptide of human S100 beta

**经过测试的应用:** WB,IHC-P,IP

**推荐稀释比:** WB: 1/500–1/1000 IHC: 1/50–1/100 IP: 1/20

**种属反应性:** Rabbit

**克隆性:** Rabbit Monoclonal

**克隆编号:** R01-1F9

**分子量:** Calculated MW: 11 kDa; Observed MW: 11 kDa

**亚型:** IgG

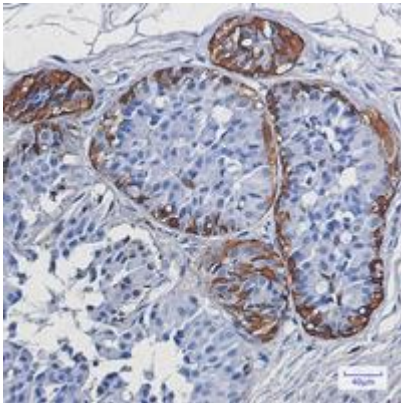
**纯化:** Affinity Purified

**种属反应性:** Human,Rat


**成分:** PBS (without Mg<sup>2+</sup> and Ca<sup>2+</sup>), pH 7.3 containing 50% glycerol, 0.5% BSA and 0.02% sodium azide

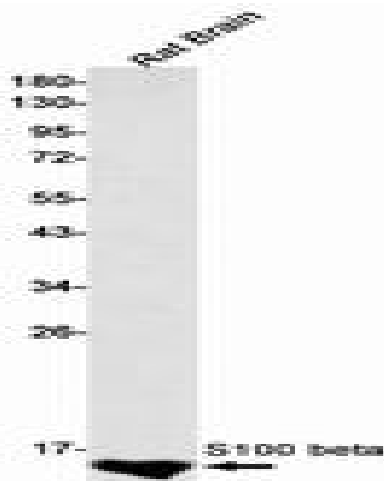
**研究领域:** Neuroscience&Astrocytes

**储存和运输:** Store at –20°C. Avoid repeated freezing and thawing



Immunohistochemistry analysis of paraffin-embedded Human breast cancer using S100 beta antibody. High-pressure and temperature Sodium Citrate pH 6.0 was used for antigen retrieval.

 Western blot analysis of S100 beta in rat Brain lysates using S100B antibody.



Western blot analysis of S100 beta in rat Brain lysates using S100 beta antibody.