

S100A8 RABBIT PAB

货号: S222415

产品全名: S100A8 兔多抗

基因符号 P8; MIF; NIF; CAGA; CFAG; CGLA; LIAg; MRP8; CP-10; MA387; 60B8AG; S100-A8

UNIPROT ID: P05109 (Gene Accession - NP_002955)

背景: The protein encoded by this gene is a member of the S100 family of proteins containing 2 EF-hand calcium-binding motifs. S100 proteins are localized in the cytoplasm and/or nucleus of a wide range of cells, and involved in the regulation of a number of cellular processes such as cell cycle progression and differentiation. S100 genes include at least 13 members which are located as a cluster on chromosome 1q21. This protein may function in the inhibition of casein kinase and as a cytokine. Altered expression of this protein is associated with the disease cystic fibrosis. Multiple transcript variants encoding different isoforms have been found for this gene.

抗原: Synthetic peptide of human S100A8

经过测试的应用: ELISA, WB, IHC

推荐稀释比: IHC: 50-200; WB: 1000-5000; ELISA: 5000-10000

种属反应性: Rabbit

克隆性: Rabbit Polyclonal

亚型: Immunogen-specific rabbit IgG

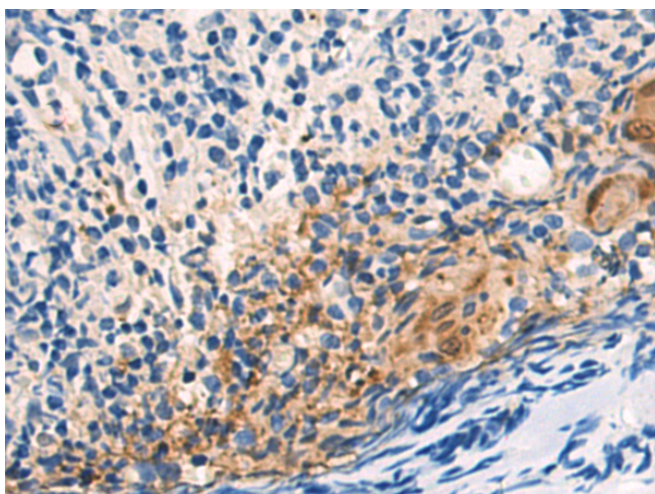
纯化: Antigen affinity purification

种属反应性: Human

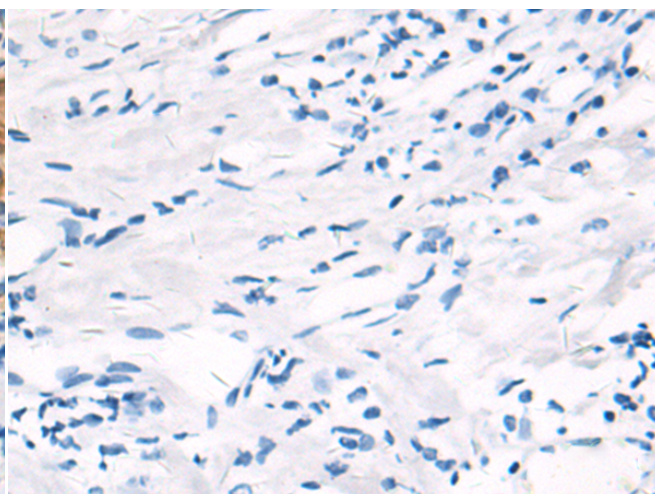
成分: PBS (without Mg²⁺ and Ca²⁺), pH 7.4, 150 mM NaCl, 0.05% Sodium Azide and 40% glycerol

研究领域: Neuroscience, Cancer

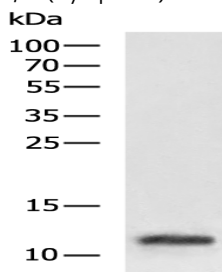
储存和运输: Store at -20°C. Avoid repeated freezing and thawing



Immunohistochemistry analysis of paraffin embedded Human tonsil tissue using 222415 (S100A8 Antibody) at a dilution of 1/50 (Cytoplasm).



In comparison with the IHC on the left, the same paraffin-embedded Human tonsil tissue is first treated with the synthetic peptide and then with 222415 (Anti-S100A8 Antibody) at dilution 1/50.



Gel: 12% SDS-PAGE, Lysate: 40 µg;

Lane: HL-60 cell lysate;

Primary antibody: 222415 (S100A8 Antibody) at dilution 1/1000;

Secondary antibody: HRP-conjugated Goat anti rabbit IgG at 1/5000 dilution;

Exposure time: 30 seconds