

## S100A16 RABBIT PAB

货号: S218074

产品全名: S100A16 兔多抗

基因符号: AAG13; S100F; DT1PIA7

**UNIPROT ID:** Q96FQ6 (Gene Accession - BC010541)

**背景:** The S-100 protein family consists of a group of calcium-binding proteins that are exclusively expressed in vertebrates and exhibit cell and tissue-specific expression. The expression levels of its members differ in various pathological conditions. The extracellular functions of the S-100 family may include the ability to enhance neurite outgrowth, involvement in inflammation and motility of tumor cells. S-100A16 (S100 calcium binding protein A16), also known as AAG13 (aging-associated gene 13 protein), S100F or DT1PIA7, is a 103 amino acid nuclear and cytoplasmic protein that exists as a homodimer that binds one calcium ion per monomer. A member of the EF-hand superfamily, S-100A16 contains two EF-hand domains and is encoded by a gene that maps to human chromosome 1q21.3. The S-100 protein family consists of a group of calcium-binding proteins that are exclusively expressed in vertebrates and exhibit cell and tissue-specific expression. The expression levels of its members differ in various pathological conditions. The extracellular functions of the S-100 family may include the ability to enhance neurite outgrowth, involvement in inflammation and motility of tumor cells. S-100A16 (S100 calcium binding protein A16), also known as AAG13 (aging-associated gene 13 protein), S100F or DT1PIA7, is a 103 amino acid nuclear and cytoplasmic protein that exists as a homodimer that binds one calcium ion per monomer. A member of the EF-hand superfamily, S-100A16 contains two EF-hand domains and is encoded by a gene that maps to human chromosome 1q21.3.

**抗原:** Full length fusion 蛋白

**经过测试的应用:** ELISA, WB, IHC

**推荐稀释比:** IHC: 20-100; WB: 500-2000; ELISA: 5000-10000

**种属反应性:** Rabbit

**克隆性:** Rabbit Polyclonal

**亚型:** Immunogen-specific rabbit IgG

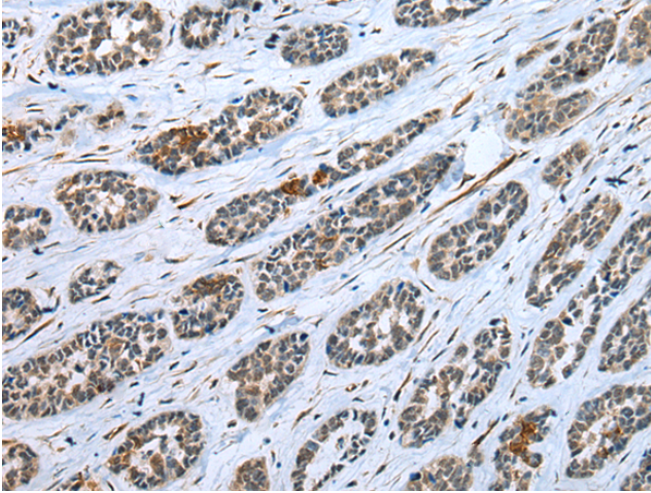
**纯化:** Antigen affinity purification

**种属反应性:** Human

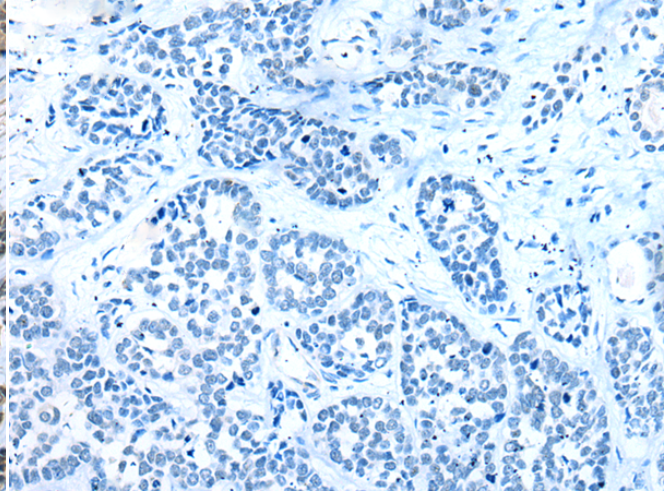
**成分:** PBS (without Mg<sup>2+</sup> and Ca<sup>2+</sup>), pH 7.4, 150 mM NaCl, 0.05% Sodium Azide and 40% glycerol

**研究领域:** Signal Transduction

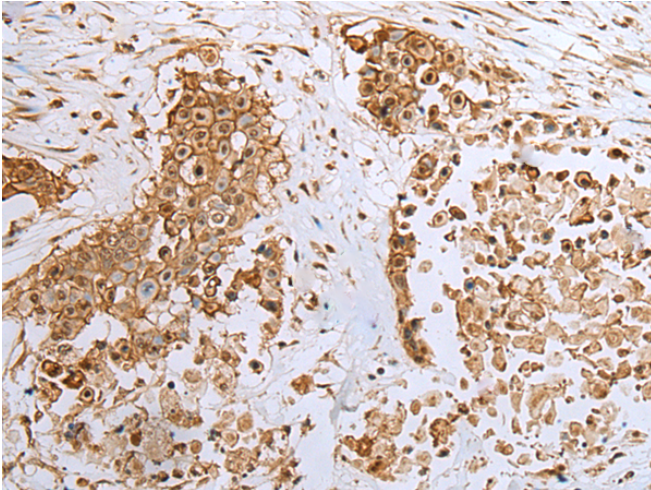
**储存和运输:** Store at -20°C. Avoid repeated freezing and thawing



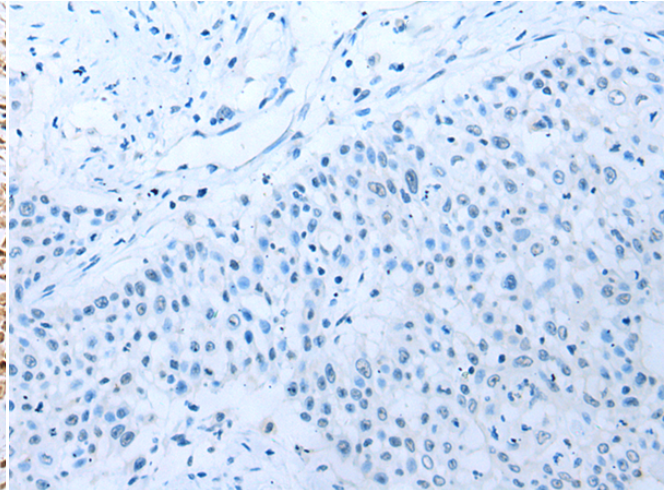
Immunohistochemistry analysis of paraffin embedded Human esophagus cancer tissue using 218074(S100A16 Antibody) at a dilution of 1/20(Cytoplasm or Nucleus).



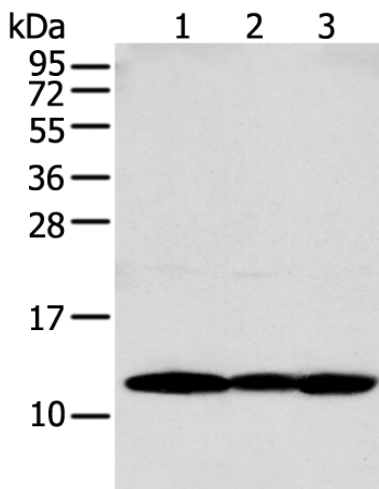
In comparison with the IHC on the left, the same paraffin-embedded Human esophagus cancer tissue is first treated with the fusion protein and then with 218074(Anti-S100A16 Antibody) at dilution 1/20.



The image on the left is immunohistochemistry of paraffin-embedded Human colorectal cancer tissue using 218074(Anti-S100A16 Antibody) at a dilution of 1/20.



In comparison with the IHC on the left, the same paraffin-embedded Human colorectal cancer tissue is first treated with fusion protein and then with D223659(Anti-S100A16 Antibody) at dilution 1/20.



Gel: 12%SDS-PAGE, Lysate: 40 µg;  
Lane 1-3: MCF-7, PC-3 and A431 cell;  
Primary antibody: 218074(S100A16 Antibody) at dilution 1/250;  
Secondary antibody: Goat anti rabbit IgG at 1/8000 dilution;  
Exposure time: 5 seconds



# Product Description

Pioneering GTPase and Oncogene Product Development since 2010

---