

S100 ALPHA6 RABBIT MAB

货号: N263538

产品全名: S100 alpha6 兔单克隆抗体

基因符号 S100 alpha6; Protein S100-A6; Calcyclin; MLN 4; PRA; CACY; CABP; 5B10

UNIPROT ID: P06703

背景: S100A6 (calcyclin) is involved in a number of cellular processes, including exocytosis and cell cycle regulation. In addition, S100A6 interacts with a number of proteins such as SIP, GAPDH, and annexins in a calcium-dependent fashion. Research studies demonstrate that a down regulation of corresponding S100A6 gene expression causes a decrease in cell proliferation.

抗原: Recombinant protein of human S100 alpha 6/PRA

经过测试的应用: WB,ICC/IF,IP

推荐稀释比: WB: 1/500-1/1000 IF: 1/50-1/200 IP: 1/20

种属反应性: Rabbit

克隆性: Rabbit Monoclonal

克隆编号: R01-8A4

分子量: Calculated MW: 10 kDa; Observed MW: 10 kDa

亚型: IgG

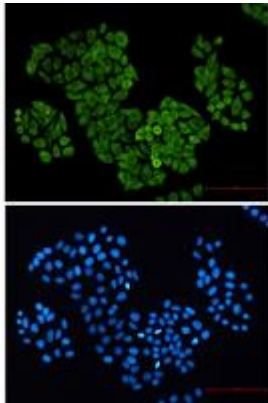
纯化: Affinity Purified

种属反应性: Human,Mouse

成分: PBS (without Mg²⁺ and Ca²⁺), pH 7.3 containing 50% glycerol, 0.5% BSA and 0.02% sodium azide

研究领域: Cell Biology

储存和运输: Store at -20°C. Avoid repeated freezing and thawing



Immunocytochemistry analysis of S100 alpha 6/PRA (green) in HeLa using S100 alpha 6/PRA antibody, and DAPI (blue)



Western blot analysis of S100 alpha 6/PRA in 3T3 lysates using S100 alpha 6/PRA antibody.



Western blot analysis of S100 alpha 6/PRA in HeLa, A549 lysates using S100 alpha 6/PRA antibody.