

RXFP3 RABBIT PAB

货号: S220253

产品全名: RXFP3 兔多抗

基因符号: SALPR; RLN3R1; RXFP3; GPCR135

UNIPROT ID: Q9NSD7 (Gene Accession - NP_057652)

背景: Predicted to enable G protein-coupled peptide receptor activity. Involved in positive regulation of cytokinesis. Predicted to be located in plasma membrane. Predicted to be integral component of plasma membrane. [provided by Alliance of Genome Resources, Apr 2022]

抗原: Synthetic peptide of human RXFP3

经过测试的应用: ELISA, IHC

推荐稀释比: IHC: 50-200; ELISA: 5000-10000

种属反应性: Rabbit

克隆性: Rabbit Polyclonal

亚型: Immunogen-specific rabbit IgG

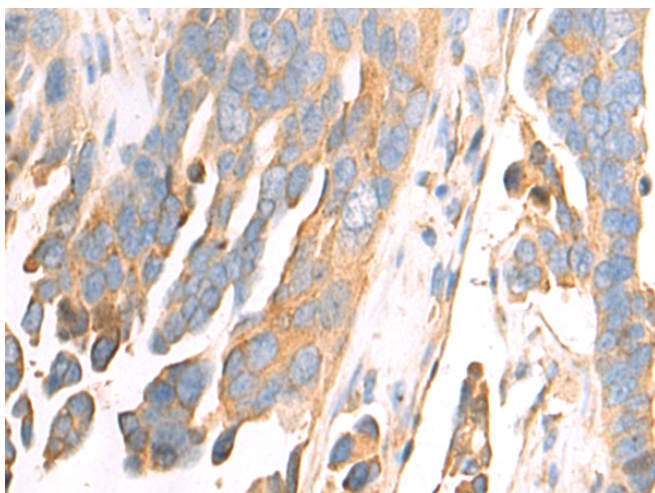
纯化: Antigen affinity purification

种属反应性: Human, Mouse

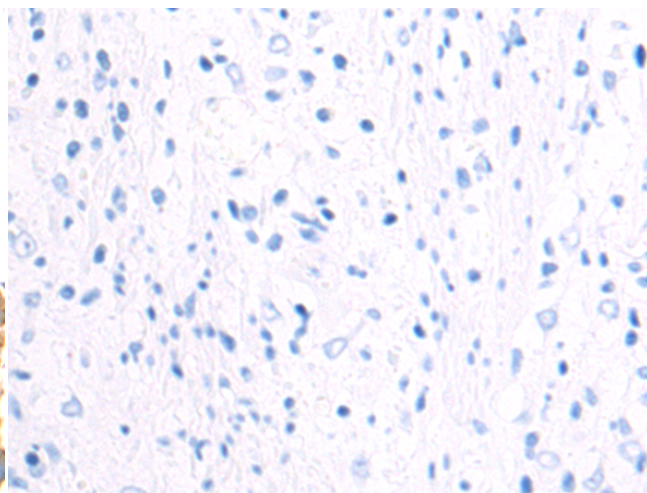
成分: PBS (without Mg²⁺ and Ca²⁺), pH 7.4, 150 mM NaCl, 0.05% Sodium Azide and 40% glycerol

研究领域: Signal Transduction, Neuroscience, Developmental Biology

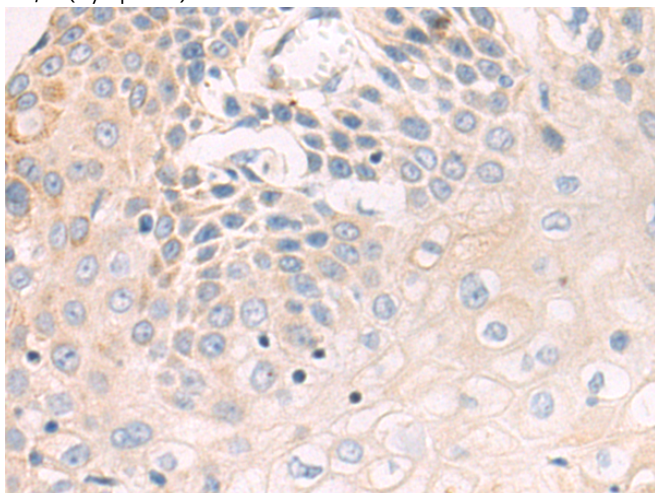
储存和运输: Store at -20°C. Avoid repeated freezing and thawing



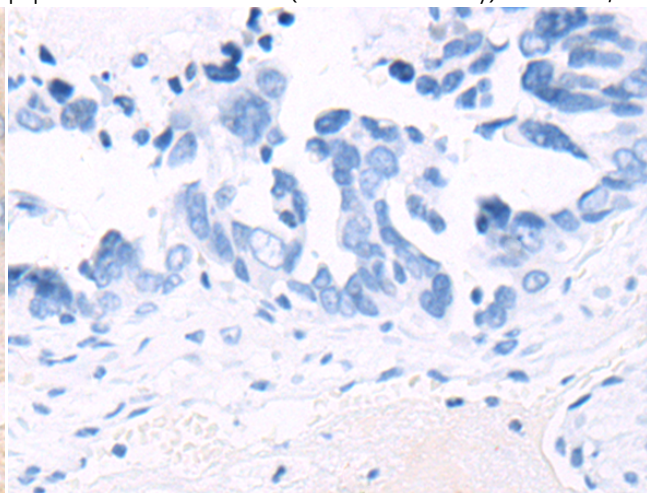
Immunohistochemistry analysis of paraffin embedded Human colorectal cancer tissue using 220253(RXFP3 Antibody) at a dilution of 1/50(Cytoplasm).



In comparison with the IHC on the left, the same paraffin-embedded Human colorectal cancer tissue is first treated with the synthetic peptide and then with 220253(Anti-RXFP3 Antibody) at dilution 1/50.



The image on the left is immunohistochemistry of paraffin-embedded Human esophagus cancer tissue using 220253(Anti-RXFP3 Antibody) at a dilution of 1/50.



In comparison with the IHC on the left, the same paraffin-embedded Human esophagus cancer tissue is first treated with synthetic peptide and then with D261208(Anti-RXFP3 Antibody) at dilution 1/50.



Product Description

Pioneering GTPase and Oncogene Product Development since 2010
