

RRAGA RABBIT PAB

货号: S217786

产品全名: RRAGA 兔多抗

基因符号: FIP1; RAGA; FIP-1

UNIPROT ID: Q7L523 (Gene Accession - BC006433)

背景: Ras-related GTP-binding protein A is a protein that in humans is encoded by the RRAG gene. Guanine nucleotide-binding protein forming heterodimeric Rag complexes required for the amino acid-induced relocalization of mTORC1 to the lysosomes and its subsequent activation by the GTPase RHEB. This is a crucial step in the activation of the TOR signaling cascade by amino acids. Involved in the RCC1/Ran-GTPase pathway. May play a direct role in a TNF-alpha signaling pathway leading to induction of cell death.

抗原: Fusion protein of human RRAGA

经过测试的应用: ELISA, WB, IHC

推荐稀释比: IHC: 25-100; WB: 500-2000; ELISA: 2000-5000

种属反应性: Rabbit

克隆性: Rabbit Polyclonal

亚型: Immunogen-specific rabbit IgG

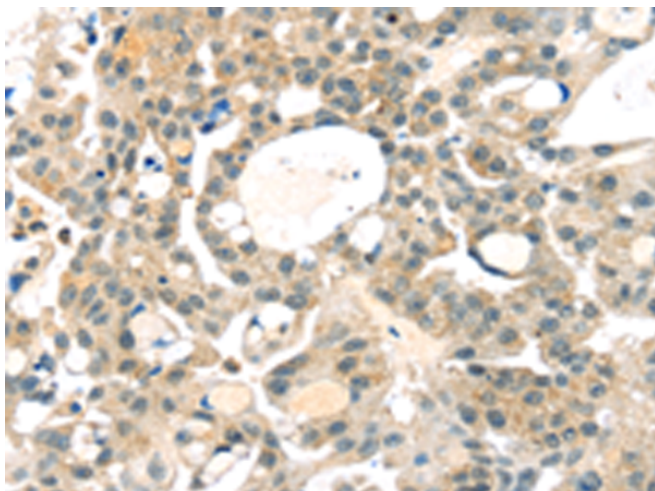
纯化: Antigen affinity purification

种属反应性: Human, Mouse, Rat

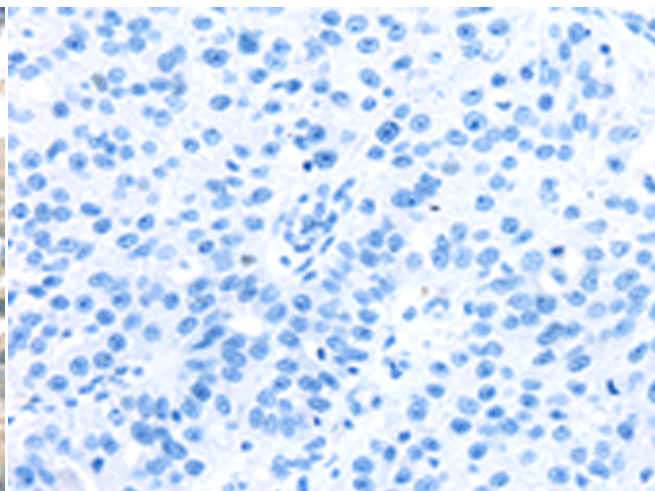
成分: PBS (without Mg²⁺ and Ca²⁺), pH 7.4, 150 mM NaCl, 0.05% Sodium Azide and 40% glycerol

研究领域: Signal Transduction, Epigenetics and Nuclear Signaling, Cancer

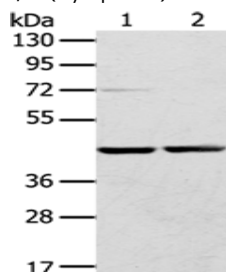
储存和运输: Store at -20°C. Avoid repeated freezing and thawing



Immunohistochemistry analysis of paraffin embedded Human breast cancer tissue using 217786 (RRAGA Antibody) at a dilution of 1/25 (Cytoplasm).



In comparison with the IHC on the left, the same paraffin-embedded Human breast cancer tissue is first treated with the fusion protein and then with 217786 (Anti-RRAGA Antibody) at dilution 1/25.



Gel: 8% SDS-PAGE, Lysate: 40 µg;

Lane 1-2: HepG2 cells, Hela cells;

Primary antibody: 217786 (RRAGA Antibody) at dilution 1/400;

Secondary antibody: Goat anti rabbit IgG at 1/8000 dilution;

Exposure time: 3 seconds