

RRAD RABBIT PAB

货号: S220186

产品全名: RRAD 兔多抗

基因符号: RAD; RAD1; REM3

UNIPROT ID: P55042 (Gene Accession - NP_004156.1)

背景: The protein may be important in cardiac antiarrhythmia via the strong suppression of voltage-gated L-type Ca²⁺ currents. As regulator of voltage-dependent L-type calcium channel subunit alpha-1C trafficking to the cell membrane. Inhibits cardiac hypertrophy through the calmodulin-dependent kinase II (CaMKII) pathway and phosphorylation and activation of CAMK2D. Mostly expressed in the heart and muscle of type II diabetic humans. Also found in the skeletal muscle, lung and adipose tissue. Lesser amounts in placenta and kidney.

抗原: Synthetic peptide of human RRAD

经过测试的应用: ELISA, IHC

推荐稀释比: IHC: 50-200; ELISA: 2000-5000

种属反应性: Rabbit

克隆性: Rabbit Polyclonal

亚型: Immunogen-specific rabbit IgG

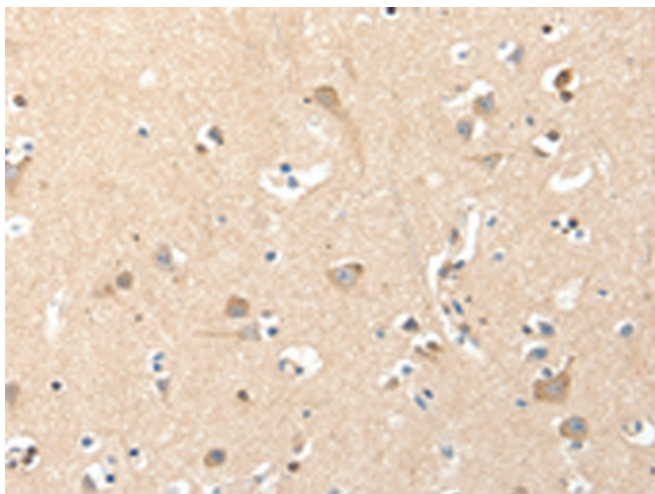
纯化: Antigen affinity purification

种属反应性: Human, Mouse, Rat

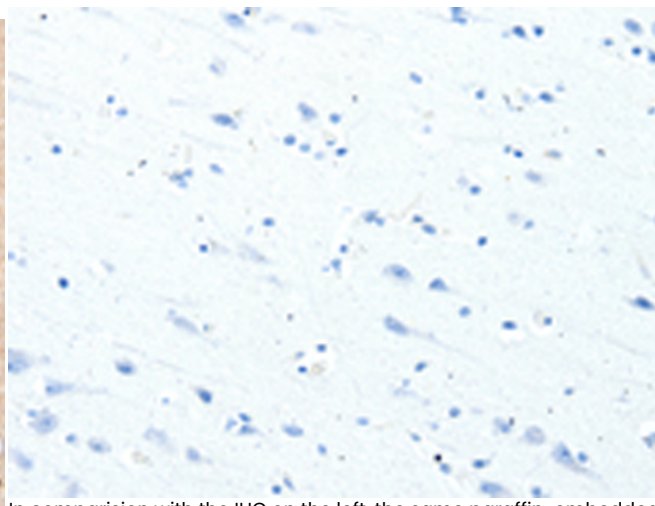
成分: PBS (without Mg²⁺ and Ca²⁺), pH 7.4, 150 mM NaCl, 0.05% Sodium Azide and 40% glycerol

研究领域: Signal Transduction, Cardiovascular

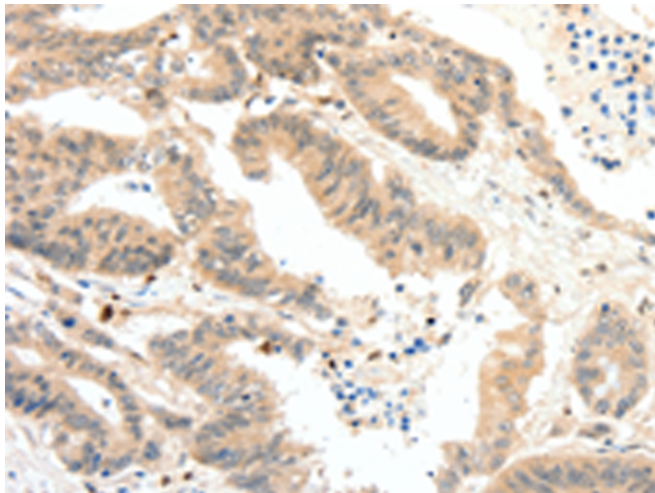
储存和运输: Store at -20°C. Avoid repeated freezing and thawing



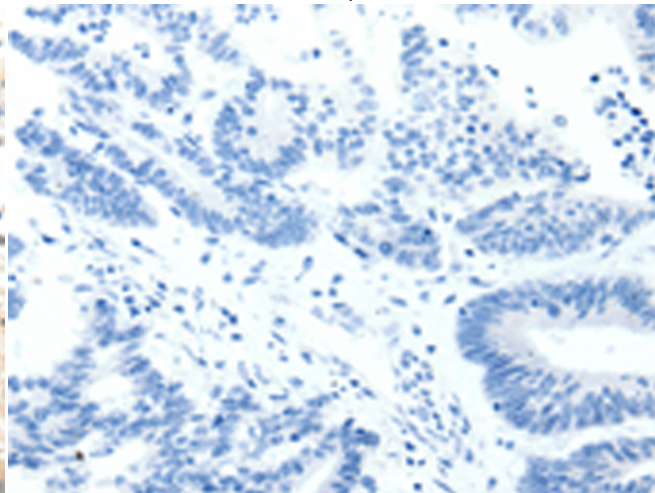
Immunohistochemistry analysis of paraffin embedded Human brain tissue using 220186(RRAD Antibody) at a dilution of 1/50(Cytoplasm).



In comparison with the IHC on the left, the same paraffin-embedded Human brain tissue is first treated with the synthetic peptide and then with 220186(Anti-RRAD Antibody) at dilution 1/50.



The image on the left is immunohistochemistry of paraffin-embedded Human colon cancer tissue using 220186(Anti-RRAD Antibody) at a dilution of 1/50.



In comparison with the IHC on the left, the same paraffin-embedded Human colon cancer tissue is first treated with synthetic peptide and then with D261101(Anti-RRAD Antibody) at dilution 1/50.



Product Description

Pioneering GTPase and Oncogene Product Development since 2010
