

RPS8 RABBIT MAB

货号: N263536

产品全名: RPS8 兔单克隆抗体

基因符号 S8

UNIPROT ID: P62241

背景: Ribosomes, the organelles that catalyze protein synthesis, consist of a small 40S subunit and a large 60S subunit. Together these subunits are composed of 4 RNA species and approximately 80 structurally distinct proteins. This gene encodes a ribosomal protein that is a component of the 40S subunit. The protein belongs to the S8E family of ribosomal proteins.

抗原: Recombinant protein of human RPS8

经过测试的应用: WB, ICC/IF, IP

推荐稀释比: WB: 1/500-1/1000 IF: 1/50-1/200 IP: 1/20

种属反应性: Rabbit

克隆性: Rabbit Monoclonal

克隆编号: R05-518

分子量: Calculated MW: 24 kDa; Observed MW: 24 kDa

亚型: IgG

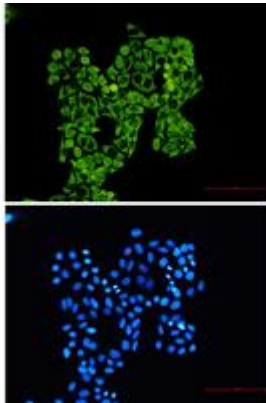
纯化: Affinity Purified

种属反应性: Human, Mouse and Rat, Hamster

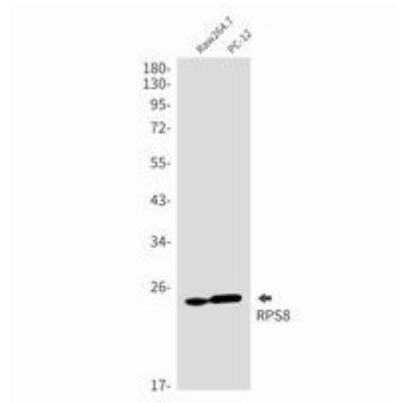
成分: PBS (without Mg²⁺ and Ca²⁺), pH 7.3 containing 50% glycerol, 0.5% BSA and 0.02% sodium azide

研究领域: -

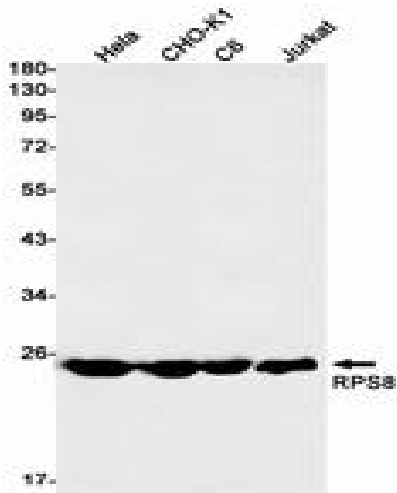
储存和运输: Store at -20°C. Avoid repeated freezing and thawing



Immunocytochemistry analysis of RPS8 (green) in HeLa using RPS8 antibody, and DAPI (blue)



Western blot analysis of RPS8 in Raw264.7, PC-12 lysates using RPS8 antibody.



Western blot analysis of RPS8 in HeLa, CHO-K1, C6, Jurkat lysates using RPS8 antibody.