

RPS6KB2 RABBIT PAB

货号: S220777

产品全名: RPS6KB2 兔多抗

基因符号 KLS; SRK; S6K2; STK14B; p70S6Kb; P70-beta; S6K-beta2; P70-beta-1; P70-beta-2; p70(S6K)-beta

UNIPROT ID: Q9UBS0 (Gene Accession - NP_003943)

背景: This gene encodes a member of the RSK (ribosomal S6 kinase) family of serine/threonine kinases. This kinase contains 2 nonidentical kinase catalytic domains and phosphorylates the S6 ribosomal protein and eucaryotic translation initiation factor 4B (eIF4B). Phosphorylation of S6 leads to an increase in protein synthesis and cell proliferation.

抗原: Synthetic peptide of human RPS6KB2

经过测试的应用: ELISA, WB, IHC

推荐稀释比: IHC: 25-100;WB: 200-1000;ELISA: 1000-2000

种属反应性: Rabbit

克隆性: Rabbit Polyclonal

亚型: Immunogen-specific rabbit IgG

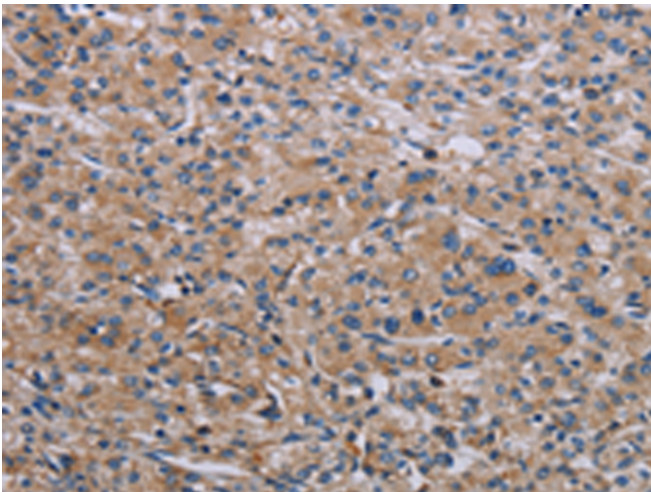
纯化: Antigen affinity purification

种属反应性: Human, Mouse

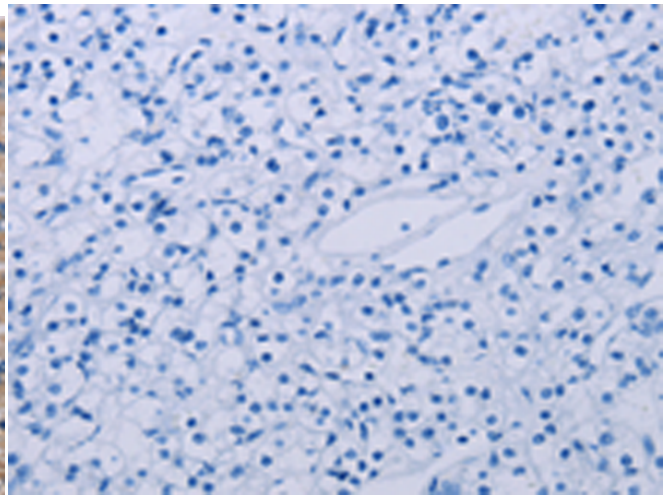
成分: PBS (without Mg²⁺ and Ca²⁺), pH 7.4, 150 mM NaCl, 0.05% Sodium Azide and 40% glycerol

研究领域: Signal Transduction, Metabolism

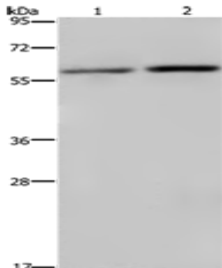
储存和运输: Store at -20°C. Avoid repeated freezing and thawing



Immunohistochemistry analysis of paraffin embedded Human prostate cancer tissue using 220777(RPS6KB2 Antibody) at a dilution of 1/40(Cytoplasm).



In comparison with the IHC on the left, the same paraffin-embedded Human prostate cancer tissue is first treated with the synthetic peptide and then with 220777(Anti-RPS6KB2 Antibody) at dilution 1/40.



Gel: 8%SDS-PAGE, Lysate: 40 µg;

Lane 1-2: HeLa cells, K562 cells;

Primary antibody: 220777(RPS6KB2 Antibody) at dilution 1/250;

Secondary antibody: Goat anti rabbit IgG at 1/8000 dilution;

Exposure time: 10 minutes