

RPS6KA1 RABBIT PAB

货号: S217785

产品全名: RPS6KA1 兔多抗

基因符号: RSK; HU-1; RSK1; MAPKAPK1A

UNIPROT ID: Q15418 (Gene Accession - BC014966)

背景: This gene encodes a member of the RSK (ribosomal S6 kinase) family of serine/threonine kinases. This kinase contains 2 nonidentical kinase catalytic domains and phosphorylates various substrates, including members of the mitogen-activated kinase (MAPK) signalling pathway. The activity of this protein has been implicated in controlling cell growth and differentiation. Alternate transcriptional splice variants, encoding different isoforms, have been characterized.

抗原: Fusion protein of human RPS6KA1

经过测试的应用: ELISA, WB, IHC

推荐稀释比: IHC: 30-150;WB: 500-2000;ELISA: 2000-5000

种属反应性: Rabbit

克隆性: Rabbit Polyclonal

亚型: Immunogen-specific rabbit IgG

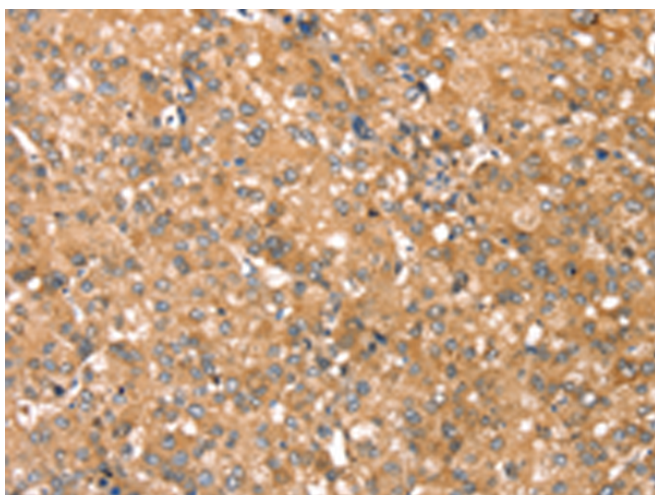
纯化: Antigen affinity purification

种属反应性: Human, Mouse, Rat

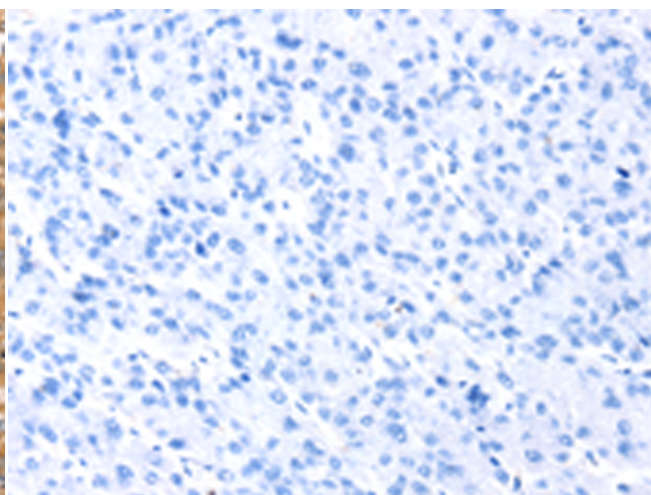
成分: PBS (without Mg²⁺ and Ca²⁺), pH 7.4, 150 mM NaCl, 0.05% Sodium Azide and 40% glycerol

研究领域: Signal Transduction, Epigenetics and Nuclear Signaling

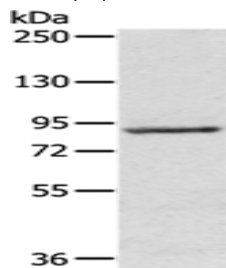
储存和运输: Store at -20°C. Avoid repeated freezing and thawing



Immunohistochemistry analysis of paraffin embedded Human liver cancer tissue using 217785(RPS6KA1 Antibody) at a dilution of 1/45(Cytoplasm).



In comparison with the IHC on the left, the same paraffin-embedded Human liver cancer tissue is first treated with the fusion protein and then with 217785(Anti-RPS6KA1 Antibody) at dilution 1/45.



Gel: 6%SDS-PAGE, Lysate: 40 µg;

Lane: 231 cells;

Primary antibody: 217785(RPS6KA1 Antibody) at dilution 1/800;

Secondary antibody: Goat anti rabbit IgG at 1/8000 dilution;

Exposure time: 30 seconds