

## RPS6 RABBIT MAB

货号: N262848

产品全名: RPS6 兔单克隆抗体

基因符号: RPS6; OK/SW-cl.2; 40S ribosomal protein S6; Phosphoprotein NP33

**UNIPROT ID:** P62753

背景: May play an important role in controlling cell growth and proliferation through the selective translation of particular classes of mRNA.

抗原: Synthetic peptide derived from human S6 Ribosomal Protein.

经过测试的应用: WB,IHC-F,IHC-P,ICC/IF,IP

推荐稀释比: WB: 1/500-1/1000 IHC: 1/50-1/100 IF: 1/50-1/200 IP: 1/20

种属反应性: Rabbit

克隆性: Rabbit Monoclonal

克隆编号: R05-3A4

分子量: Calculated MW: 29 kDa; Observed MW: 29 kDa

亚型: IgG

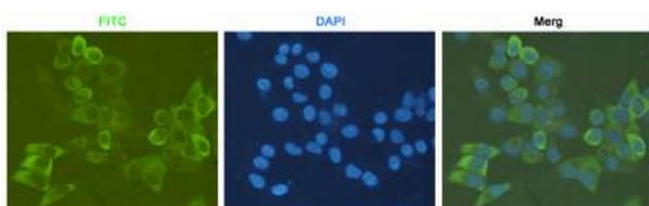
纯化: Affinity Purified

种属反应性: Human, Mouse and Rat

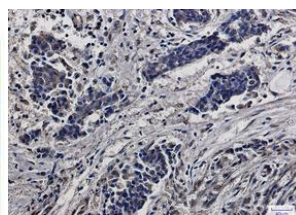
成分: PBS (without Mg<sup>2+</sup> and Ca<sup>2+</sup>), pH 7.3 containing 50% glycerol, 0.5% BSA and 0.02% sodium azide

研究领域: Epigenetics and Nuclear Signaling

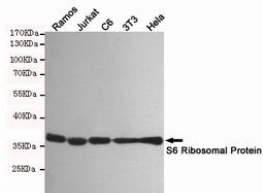
储存和运输: Store at -20°C. Avoid repeated freezing and thawing



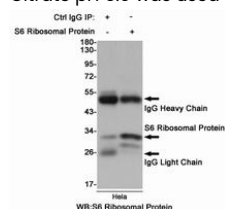
Immunocytochemistry analysis of HeLa using antiS6 Ribosomal Protein antibody.



Immunohistochemistry analysis of paraffin-embedded Human breast cancer using RPS6 antibody. High-pressure and temperature Sodium Citrate pH 6.0 was used for antigen retrieval.



Western blot analysis of S6 Ribosomal Protein in Ramos, Jurkat, C6, 3T3 and HeLa lysates using S6 Ribosomal Protein antibody.



Immunoprecipitation analysis of HeLa cell lysates using S6 Ribosomal Protein antibody.