

RPS6 (7B10) MOUSE MAB

货号: N261164

产品全名: RPS6 (7B10) 小鼠单抗

基因符号 RPS6; OK/SW-cl.2; 40S ribosomal protein S6; Phosphoprotein NP33

UNIPROT ID: P62753

背景: May play an important role in controlling cell growth and proliferation through the selective translation of particular classes of mRNA.

抗原: Recombinant full length protein corresponding to human S6 Ribosomal Protein.

经过测试的应用: WB, ICC/IF, IP

推荐稀释比: WB: 1/500-1/1000 IF: 1/50-1/200 IP: 1/20

种属反应性: Mouse

克隆性: Mouse Monoclonal

克隆编号: 7B10-E11-E11

分子量: Calculated MW: 29 kDa; Observed MW: 32 kDa

亚型: IgG1

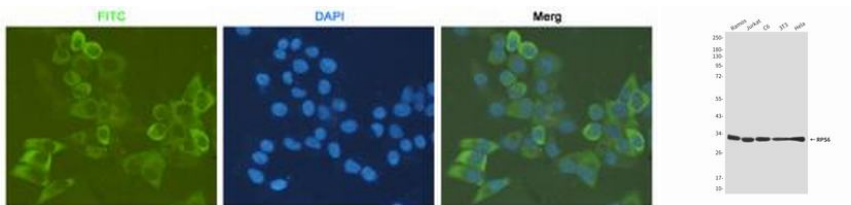
纯化: Affinity Purified

种属反应性: Human, Mouse and Rat, Monkey

成分: PBS (without Mg²⁺ and Ca²⁺), pH 7.3 containing 50% glycerol, 0.5% BSA and 0.02% sodium azide

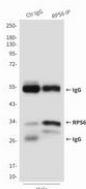
研究领域: Epigenetics and Nuclear Signaling

储存和运输: Store at -20°C. Avoid repeated freezing and thawing

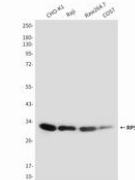


Immunocytochemistry analysis of RPS6 (7B10) in HeLa using S6 Ribosomal Protein antibody.

Western blot analysis of S6 Ribosomal Protein in Ramos, Jurkat, C6, 3T3 and HeLa lysates using S6 Ribosomal Protein antibody.



Immunoprecipitation analysis of RPS6 (7B10) in HeLa lysates using S6 Ribosomal Protein antibody.



Western blot analysis of RPS6 (7B10) in CHO-K1, Raji, Raw264.7 and COS7 lysates using RPS6 (7B10) antibody