

## RPS27L RABBIT PAB

货号: S218784

产品全名: RPS27L 兔多抗

基因符号

**UNIPROT ID:** Q7IUM5 (Gene Accession - BC003667)

背景: This gene encodes a protein sharing 96% amino acid similarity with ribosomal protein S27, which suggests the encoded protein may be a component of the 40S ribosomal subunit.

抗原: Fusion protein of human RPS27L

经过测试的应用: ELISA, WB, IHC

推荐稀释比: IHC: 40-200;WB: 500-2000;ELISA: 5000-10000

种属反应性: Rabbit

克隆性: Rabbit Polyclonal

亚型: Immunogen-specific rabbit IgG

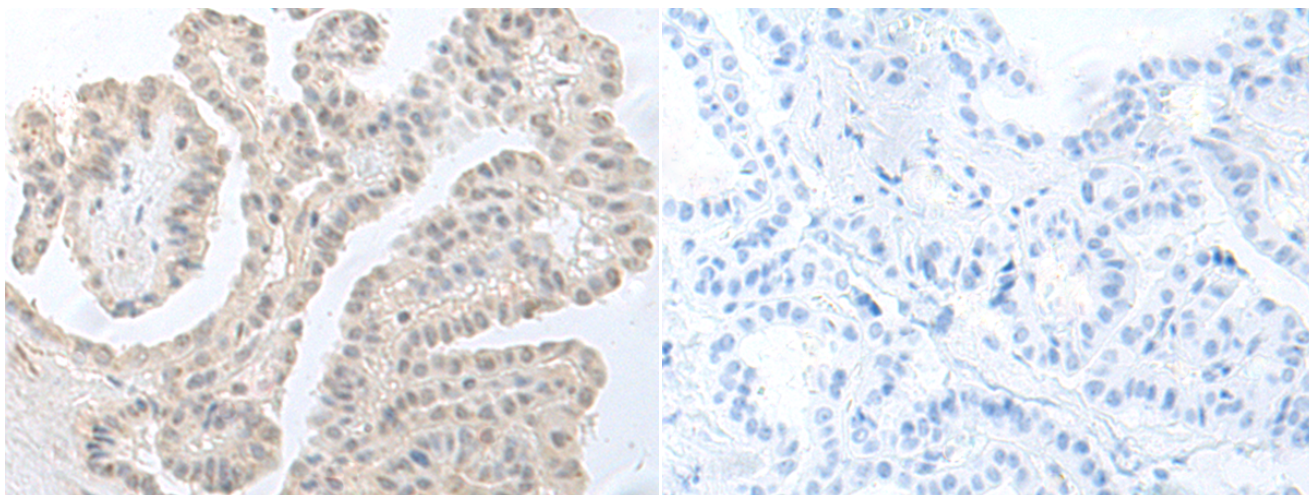
纯化: Antigen affinity purification

种属反应性: Human, Mouse, Rat

成分: PBS (without Mg<sup>2+</sup> and Ca<sup>2+</sup>), pH 7.4, 150 mM NaCl, 0.05% Sodium Azide and 40% glycerol

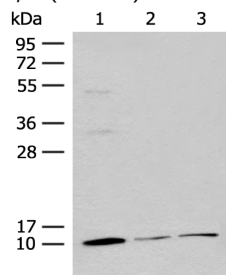
研究领域: Epigenetics and Nuclear Signaling, Cancer

储存和运输: Store at -20°C. Avoid repeated freezing and thawing



Immunohistochemistry analysis of paraffin embedded Human thyroid cancer tissue using 218784(RPS27L Antibody) at a dilution of 1/55(Nucleus).

In comparison with the IHC on the left, the same paraffin-embedded Human thyroid cancer tissue is first treated with the fusion protein and then with 218784(Anti-RPS27L Antibody) at dilution 1/55.



Gel: 12%SDS-PAGE, Lysate: 40 µg;

Lane 1-3: Mouse adrenal gland tissue, Rat lung tissue, 231 cell lysates;

Primary antibody: 218784(RPS27L Antibody) at dilution 1/400;

Secondary antibody: Goat anti rabbit IgG at 1/8000 dilution;

Exposure time: 10 seconds