

RPS27 RABBIT PAB

货号: S216218

产品全名: RPS27 兔多抗

基因符号 S27; MPS1; eS27; DBA17; MPS-1

UNIPROT ID: P42677 (Gene Accession - BC002658)

背景: Ribosomes, the organelles that catalyze protein synthesis, consist of a small 40S subunit and a large 60S subunit. Together these subunits are composed of four RNA species and approximately 80 structurally distinct proteins. This gene encodes a member of the S27e family of ribosomal proteins and component of the 40S subunit. The encoded protein contains a C4-type zinc finger domain that can bind to zinc and may bind to nucleic acid. Mutations in this gene have been identified in numerous melanoma patients and in at least one patient with Diamond-Blackfan anemia (DBA). Elevated expression of this gene has been observed in various human cancers. As is typical for genes encoding ribosomal proteins, there are multiple processed pseudogenes of this gene dispersed through the genome.

抗原: Fusion protein of human RPS27

经过测试的应用: ELISA, WB, IHC

推荐稀释比: IHC: 25-100;WB: 500-2000;ELISA: 1000-2000

种属反应性: Rabbit

克隆性: Rabbit Polyclonal

亚型: Immunogen-specific rabbit IgG

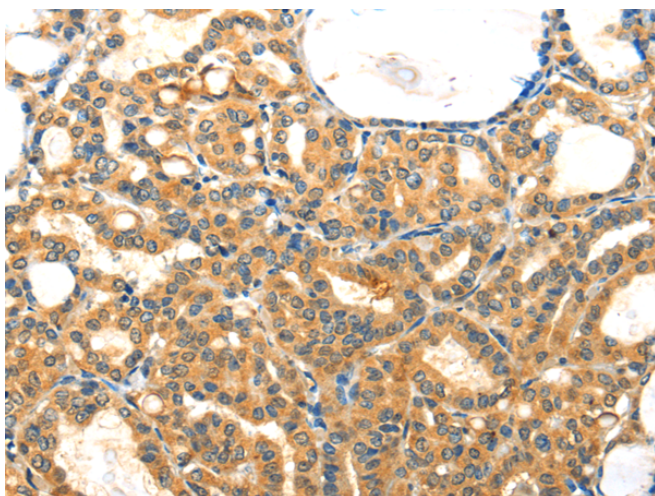
纯化: Antigen affinity purification

种属反应性: Human, Mouse, Rat

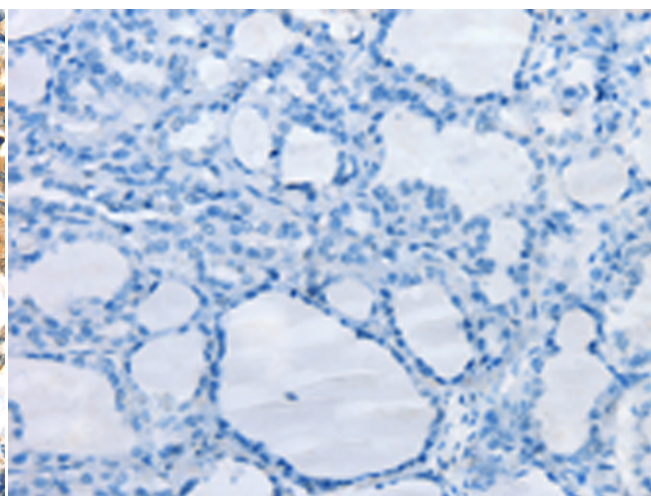
成分: PBS (without Mg²⁺ and Ca²⁺), pH 7.4, 150 mM NaCl, 0.05% Sodium Azide and 40% glycerol

研究领域: Epigenetics and Nuclear Signaling

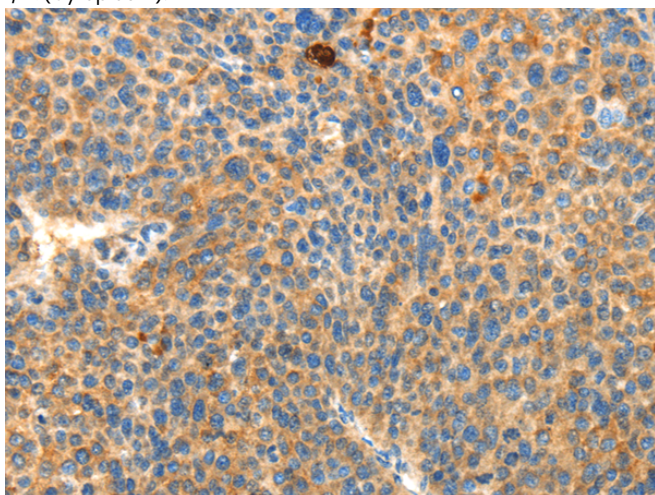
储存和运输: Store at -20°C. Avoid repeated freezing and thawing



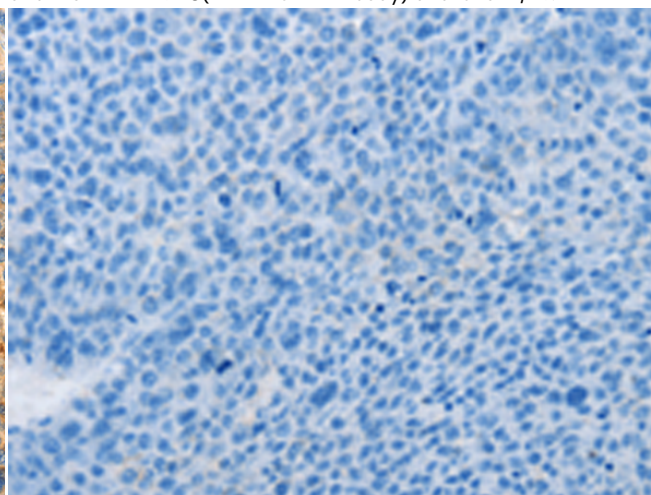
Immunohistochemistry analysis of paraffin embedded Human thyroid cancer tissue using 216218(RPS27 Antibody) at a dilution of 1/25(Cytoplasm).



In comparison with the IHC on the left, the same paraffin-embedded Human thyroid cancer tissue is first treated with the fusion protein and then with 216218(Anti-RPS27 Antibody) at dilution 1/25.



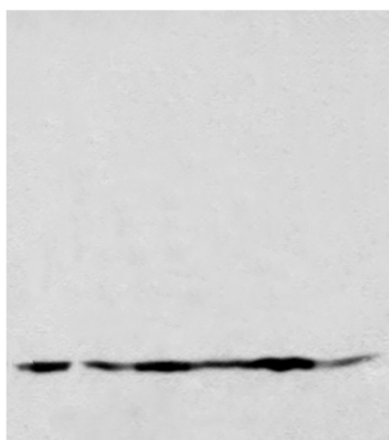
The image on the left is immunohistochemistry of paraffin-embedded Human liver cancer tissue using 216218(Anti-RPS27 Antibody) at a dilution of 1/25.



In comparison with the IHC on the left, the same paraffin-embedded Human liver cancer tissue is first treated with fusion protein and then with D220011(Anti-RPS27 Antibody) at dilution 1/25.

kDa 1 2 3 4 5 6

100 —
70 —
55 —
35 —
25 —
15 —
10 —



Gel: 12%SDS-PAGE, Lysate: 40 µg;
Lane 1-6: Lo2, K562, Raji, Jurkat, HeLa, MCF7 cell lysates;
Primary antibody: 216218(RPS27 Antibody) at dilution 1/650;
Secondary antibody: HRP-conjugated Goat anti rabbit IgG at 1/5000 dilution;
Exposure time: 20 seconds



Product Description

Pioneering GTPase and Oncogene Product Development since 2010
