

RPS20 RABBIT PAB

货号: N225686

产品全名: RPS20 兔多抗

基因符号 RPS20; 40S ribosomal protein S20

UNIPROT ID: P60866

背景: RPS20 is a a ribosomal protein that is a component of the 40S subunit. Ribosomes, the organelles that catalyze protein synthesis, consist of a small 40S subunit and a large 60S subunit. Together these subunits are composed of 4 RNA species and approximately 80 structurally distinct proteins. RPS20 belongs to the S10P family of ribosomal proteins and is located in the cytoplasm.

抗原: A synthesized peptide derived from human RPS20

经过测试的应用: WB,IHC-P,ICC/IF

推荐稀释比: WB: 1/500-1/1000 IHC: 1/50-1/100 IF: 1/50-1/200

种属反应性: Rabbit

克隆性: Rabbit Polyclonal

分子量: Calculated MW: 13 kDa; Observed MW: 13 kDa

亚型: IgG

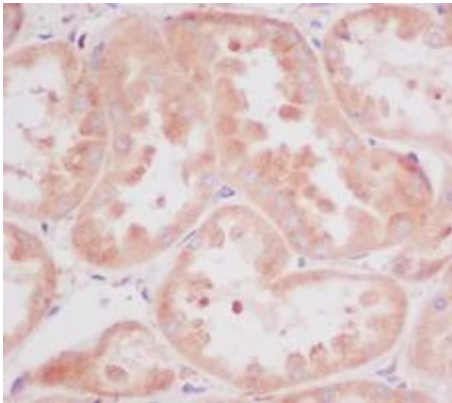
纯化: Affinity Chromatography

种属反应性: Human, Mouse and Rat

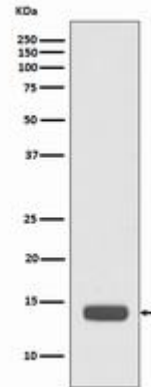
成分: PBS (without Mg²⁺ and Ca²⁺), pH 7.3 containing 50% glycerol, 0.5% BSA and 0.02% sodium azide

研究领域: Epigenetics and Nuclear Signaling

储存和运输: Store at -20°C. Avoid repeated freezing and thawing



Immunohistochemistry analysis of paraffin-embedded Human kidney using RPS20 antibody. High- pressure and temperature Sodium Citrate pH 6.0 was used for antigen retrieval.



Western blot analysis of RPS20 in Sodium HeLa lysates using RPS20 antibody.