

## RPS14 RABBIT PAB

货号: S219214

产品全名: RPS14 兔多抗

基因符号: S14; EMTB

**UNIPROT ID:** P62263 (Gene Accession - BC001126)

**背景:** Ribosomes, the organelles that catalyze protein synthesis, consist of a small 40S subunit and a large 60S subunit. Together these subunits are composed of 4 RNA species and approximately 80 structurally distinct proteins. This gene encodes a ribosomal protein that is a component of the 40S subunit. The protein belongs to the S11P family of ribosomal proteins. It is located in the cytoplasm. Transcript variants utilizing alternative transcription initiation sites have been described in the literature. As is typical for genes encoding ribosomal proteins, there are multiple processed pseudogenes of this gene dispersed through the genome. In Chinese hamster ovary cells, mutations in this gene can lead to resistance to emetine, a protein synthesis inhibitor. Multiple alternatively spliced transcript variants encoding the same protein have been found for this gene.

**抗原:** Fusion protein of human RPS14

**经过测试的应用:** ELISA, WB, IHC

**推荐稀释比:** IHC: 50-200; WB: 1000-5000; ELISA: 5000-10000

**种属反应性:** Rabbit

**克隆性:** Rabbit Polyclonal

**亚型:** Immunogen-specific rabbit IgG

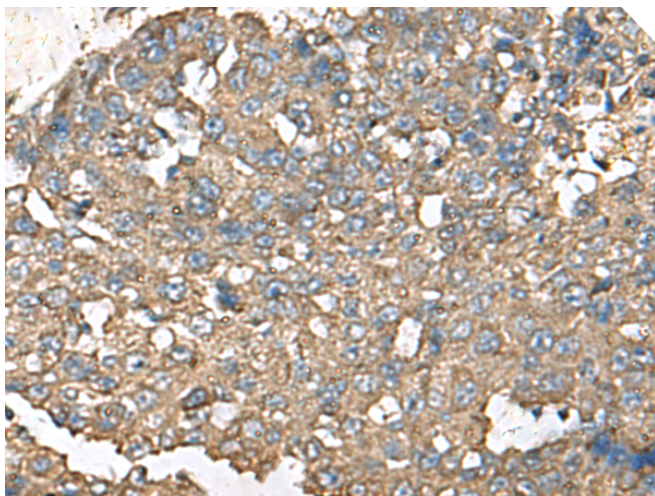
**纯化:** Antigen affinity purification

**种属反应性:** Human, Mouse, Rat

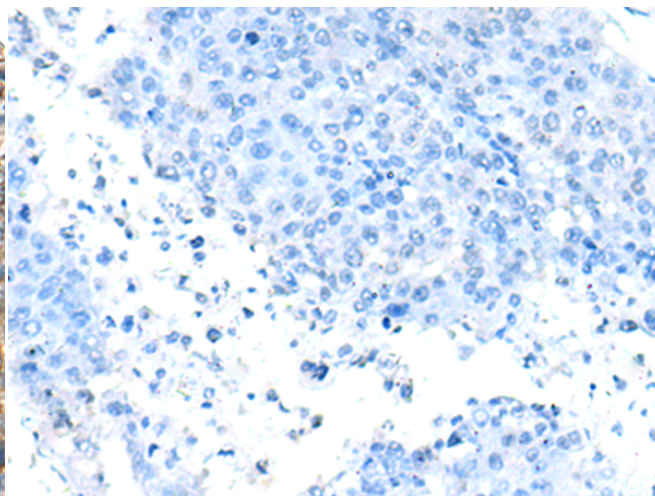
**成分:** PBS (without Mg<sup>2+</sup> and Ca<sup>2+</sup>), pH 7.4, 150 mM NaCl, 0.05% Sodium Azide and 40% glycerol

**研究领域:** Epigenetics and Nuclear Signaling

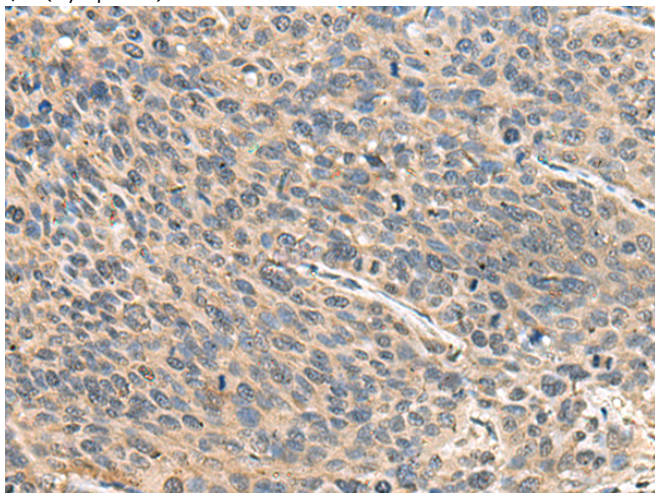
**储存和运输:** Store at -20°C. Avoid repeated freezing and thawing



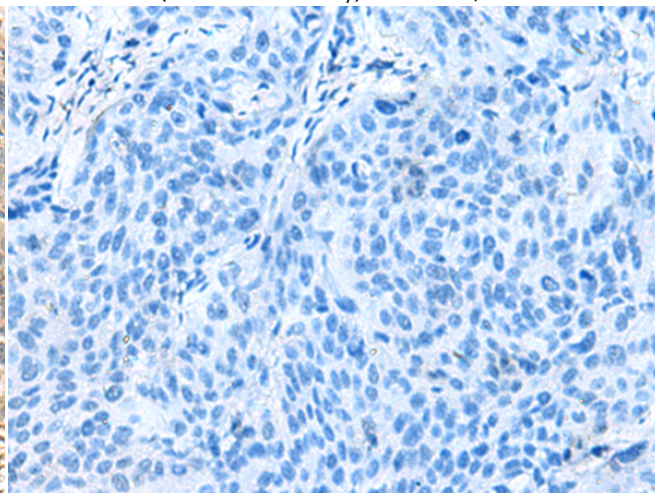
Immunohistochemistry analysis of paraffin embedded Human liver cancer tissue using 219214(RPS14 Antibody) at a dilution of 1/50(Cytoplasm).



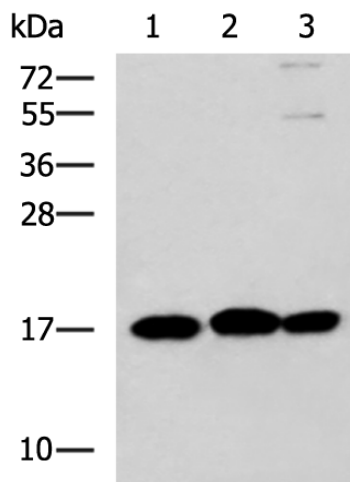
In comparison with the IHC on the left, the same paraffin-embedded Human liver cancer tissue is first treated with the fusion protein and then with 219214(Anti-RPS14 Antibody) at dilution 1/50.



The image on the left is immunohistochemistry of paraffin-embedded Human cervical cancer tissue using 219214(Anti-RPS14 Antibody) at a dilution of 1/50.



In comparison with the IHC on the left, the same paraffin-embedded Human cervical cancer tissue is first treated with fusion protein and then with D226065(Anti-RPS14 Antibody) at dilution 1/50.



Gel: 12%SDS-PAGE, Lysate: 40 µg;  
 Lane 1-3: 231, HL60 and Jurkat cell lysates;  
 Primary antibody: 219214(RPS14 Antibody) at dilution 1/700;  
 Secondary antibody: HRP-conjugated Goat anti rabbit IgG at 1/5000 dilution;  
 Exposure time: 90 seconds



# Product Description

Pioneering GTPase and Oncogene Product Development since 2010

---