

## RPP14 RABBIT PAB

货号: S218950

产品全名: RPP14 兔多抗

基因符号: P14

**UNIPROT ID:** O95059 (Gene Accession - BC012017)

**背景:** This gene encodes a subunit of ribonuclease P and has 3' to 5' exoribonuclease activity. Transcripts for this gene are bicistronic and include a conserved downstream open reading frame for the hydroxyacyl-thioester dehydratase type 2 (HTD2) gene.

**抗原:** Fusion protein of human RPP14

**经过测试的应用:** ELISA, WB, IHC

**推荐稀释比:** IHC: 40-200;WB: 200-1000;ELISA: 5000-10000

**种属反应性:** Rabbit

**克隆性:** Rabbit Polyclonal

**亚型:** Immunogen-specific rabbit IgG

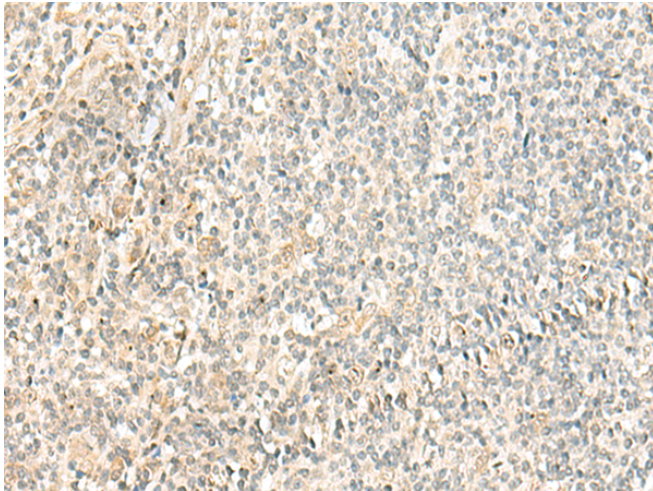
**纯化:** Antigen affinity purification

**种属反应性:** Human, Mouse

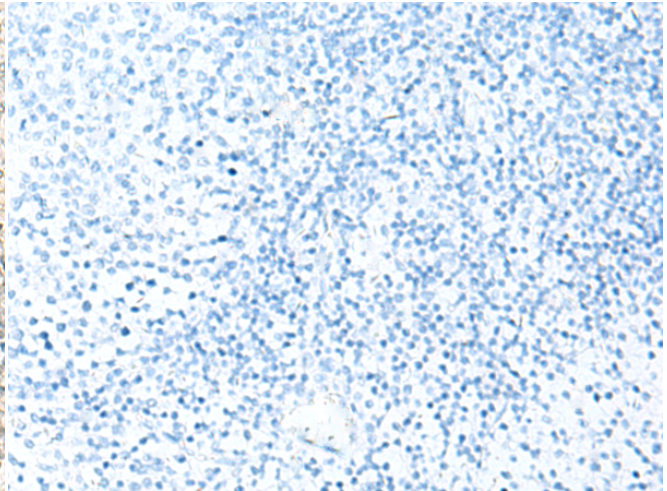
**成分:** PBS (without Mg<sup>2+</sup> and Ca<sup>2+</sup>), pH 7.4, 150 mM NaCl, 0.05% Sodium Azide and 40% glycerol

**研究领域:** Epigenetics and Nuclear Signaling

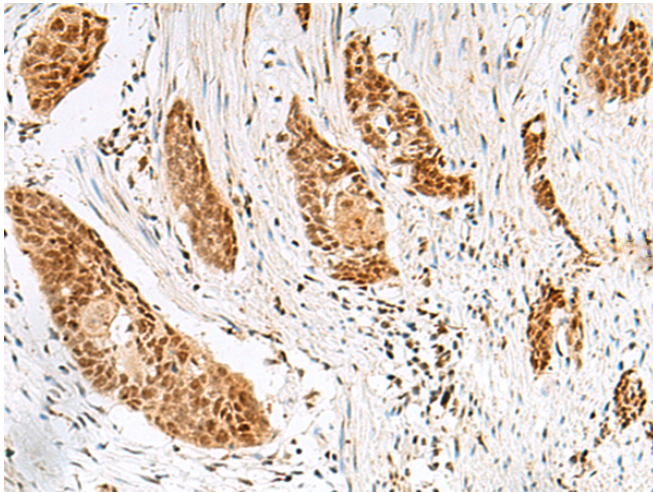
**储存和运输:** Store at -20°C. Avoid repeated freezing and thawing



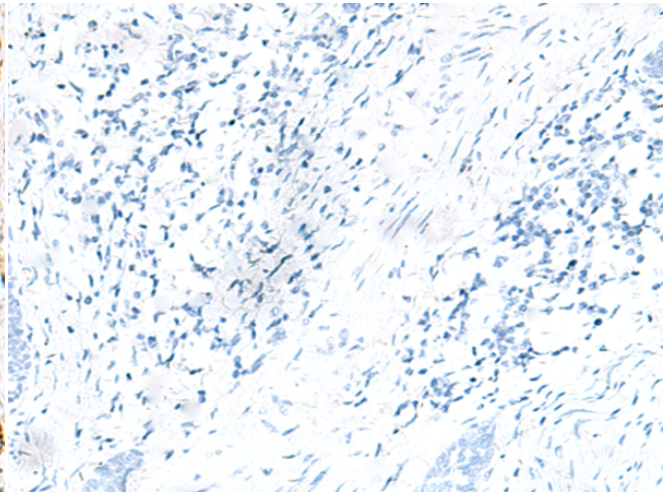
Immunohistochemistry analysis of paraffin embedded Human tonsil tissue using 218950(RPP14 Antibody) at a dilution of 1/40(Cytoplasm or Nucleus).



In comparison with the IHC on the left, the same paraffin-embedded Human tonsil tissue is first treated with the fusion protein and then with 218950(Anti-RPP14 Antibody) at dilution 1/40.

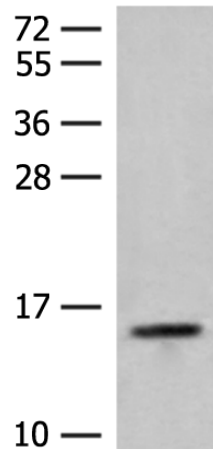


The image on the left is immunohistochemistry of paraffin-embedded Human esophagus cancer tissue using 218950(Anti-RPP14 Antibody) at a dilution of 1/40.



In comparison with the IHC on the left, the same paraffin-embedded Human esophagus cancer tissue is first treated with fusion protein and then with D225559(Anti-RPP14 Antibody) at dilution 1/40.

kDa



Gel: 12%SDS-PAGE, Lysate: 40 µg;

Lane: Hela cell lysate;

Primary antibody: 218950(RPP14 Antibody) at dilution 1/250;

Secondary antibody: Goat anti rabbit IgG at 1/8000 dilution;

Exposure time: 30 seconds



# Product Description

Pioneering GTPase and Oncogene Product Development since 2010

---