

RPL9 RABBIT PAB

货号: S222432

产品全名: RPL9 兔多抗

基因符号: L9; NPC-A-16

UNIPROT ID: P32969 (Gene Accession - NP_000652)

背景: Ribosomes, the organelles that catalyze protein synthesis, consist of a small 40S subunit and a large 60S subunit. Together these subunits are composed of 4 RNA species and approximately 80 structurally distinct proteins. This gene encodes a ribosomal protein that is a component of the 60S subunit. The protein belongs to the L6P family of ribosomal proteins. It is located in the cytoplasm. As is typical for genes encoding ribosomal proteins, there are multiple processed pseudogenes of this gene dispersed through the genome. Alternative splicing results in multiple transcript variants.

抗原: Synthetic peptide of human RPL9

经过测试的应用: ELISA, WB, IHC

推荐稀释比: IHC: 50-200;WB: 1000-5000;ELISA: 5000-10000

种属反应性: Rabbit

克隆性: Rabbit Polyclonal

亚型: Immunogen-specific rabbit IgG

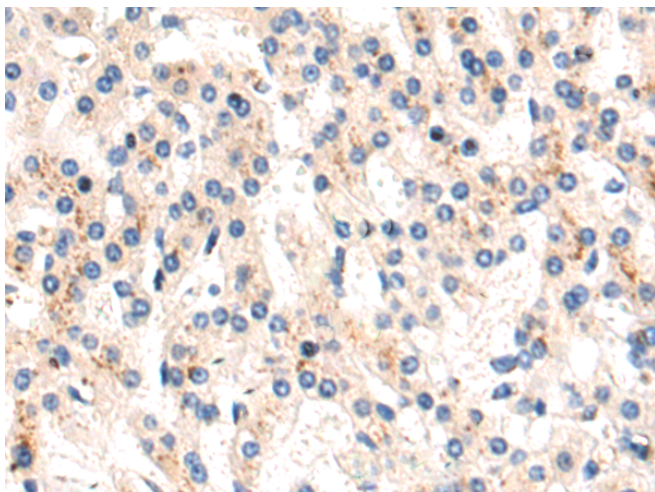
纯化: Antigen affinity purification

种属反应性: Human, Mouse, Rat

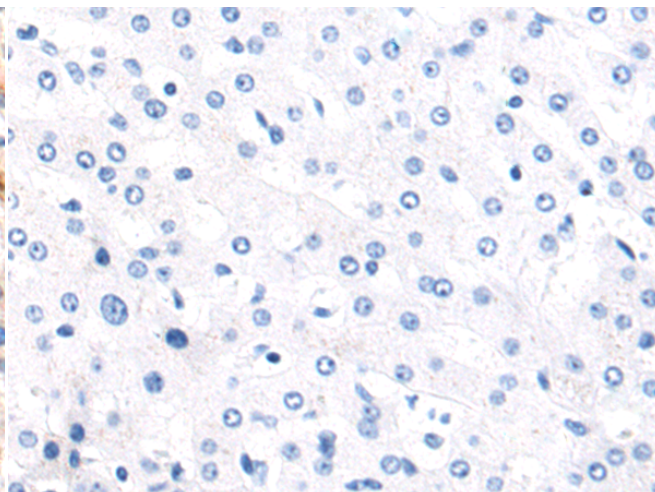
成分: PBS (without Mg²⁺ and Ca²⁺), pH 7.4, 150 mM NaCl, 0.05% Sodium Azide and 40% glycerol

研究领域: Epigenetics and Nuclear Signaling

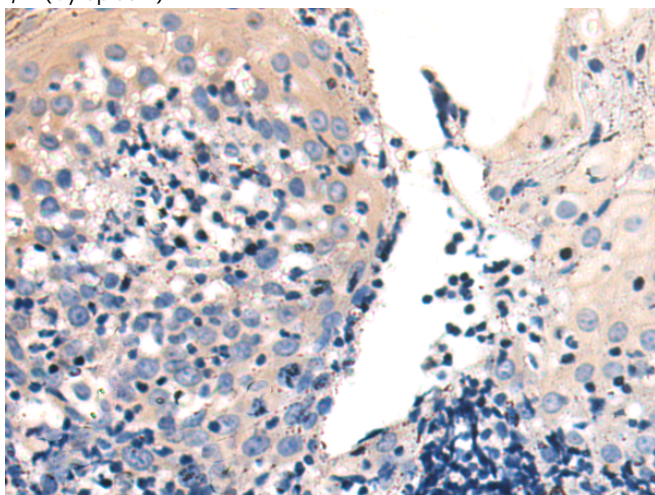
储存和运输: Store at -20°C. Avoid repeated freezing and thawing



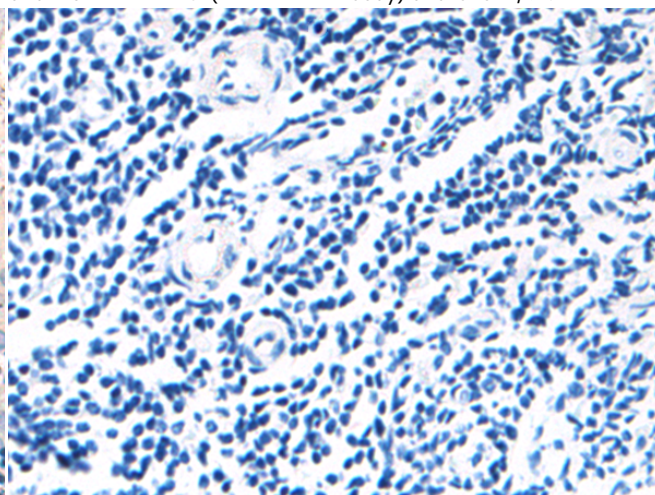
Immunohistochemistry analysis of paraffin embedded Human liver cancer tissue using 222432(RPL9 Antibody) at a dilution of 1/50(Cytoplasm).



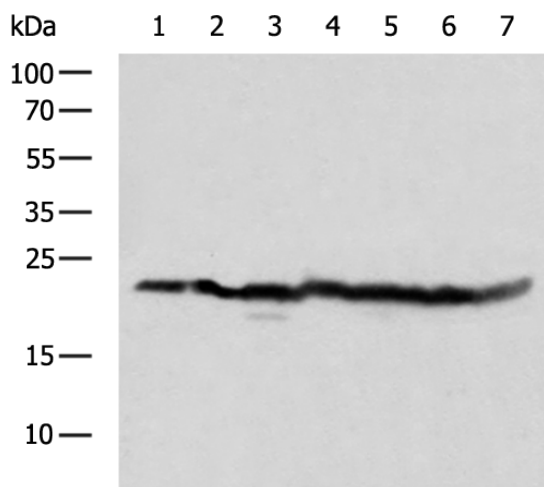
In comparison with the IHC on the left, the same paraffin-embedded Human liver cancer tissue is first treated with the synthetic peptide and then with 222432(Anti-RPL9 Antibody) at dilution 1/50.



The image on the left is immunohistochemistry of paraffin-embedded Human tonsil tissue using 222432(Anti-RPL9 Antibody) at a dilution of 1/50.



In comparison with the IHC on the left, the same paraffin-embedded Human tonsil tissue is first treated with synthetic peptide and then with D264601(Anti-RPL9 Antibody) at dilution 1/50.



Gel: 12%SDS-PAGE, Lysate: 40 µg;
 Lane 1-7: NIH/3T3, HeLa, 293T, Jurkat, K562 cell, Mouse skin tissue, Mouse kidney tissue lysates;
 Primary antibody: 222432(RPL9 Antibody) at dilution 1/800;
 Secondary antibody: HRP-conjugated Goat anti rabbit IgG at 1/5000 dilution;
 Exposure time: 1 second



Product Description

Pioneering GTPase and Oncogene Product Development since 2010
