

RPL7 RABBIT PAB

货号: N225464

产品全名: RPL7 兔多抗

基因符号 L7; humL7-1

UNIPROT ID: P18124

背景: Component of the large ribosomal subunit (PubMed:12962325). Binds to G-rich structures in 28S rRNA and in mRNAs. Plays a regulatory role in the translation apparatus; inhibits cell-free translation of mRNAs.

抗原: The antiserum was produced against synthesized peptide derived from human RPL7. AA range:199-248

经过测试的应用: WB,IHC-P,ELISA

推荐稀释比: WB: 1/500-1/1000 IHC: 1/50-1/100 ELISA: 1/10000

种属反应性: Rabbit

克隆性: Rabbit Polyclonal

分子量: Calculated MW: 29 kDa; Observed MW: 32 kDa

亚型: IgG

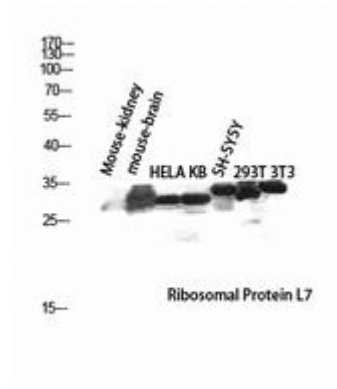
纯化: Affinity Chromatography

种属反应性: Human, Mouse and Rat

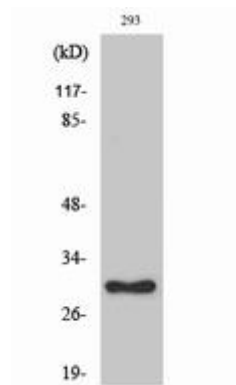
成分: PBS (without Mg²⁺ and Ca²⁺), pH 7.3 containing 50% glycerol, 0.5% BSA and 0.02% sodium azide

研究领域: Epigenetics and Nuclear Signaling

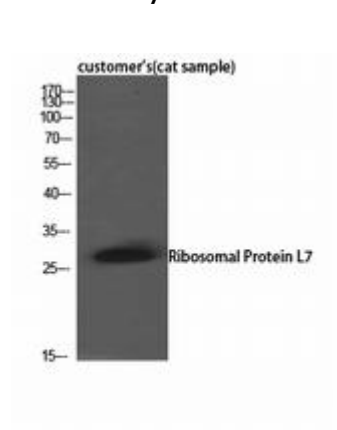
储存和运输: Store at -20°C. Avoid repeated freezing and thawing



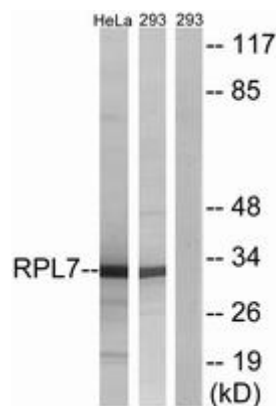
Western blot analysis of RPL7 in mouse kidney, mouse brain, HELA, KB, SH-SY5Y, 293T and 3T3 lysates using Ribosomal Protein L7 antibody.



Western blot analysis of RPL7 in various lysates using RPL7 antibody.



Western blot analysis of RPL7 in cat sample lysates using Ribosomal Protein L7 antibody.



Western blot analysis of RPL7 in HeLa and 293 lysates using RPL7 antibody. The lane on the right is blocked with the synthesized peptide.