

## RPL22L1 RABBIT PAB

货号: S222429

产品全名: RPL22L1 兔多抗

基因符号

**UNIPROT ID:** Q6P5R6 (Gene Accession - NP\_001093115)

**背景:** Predicted to enable RNA binding activity. Predicted to be a structural constituent of ribosome. Predicted to be involved in cytoplasmic translation. Predicted to be located in ribosome.

**抗原:** Synthetic peptide of human RPL22L1

**经过测试的应用:** ELISA, IHC

**推荐稀释比:** IHC: 50-200; ELISA: 5000-10000

**种属反应性:** Rabbit

**克隆性:** Rabbit Polyclonal

**亚型:** Immunogen-specific rabbit IgG

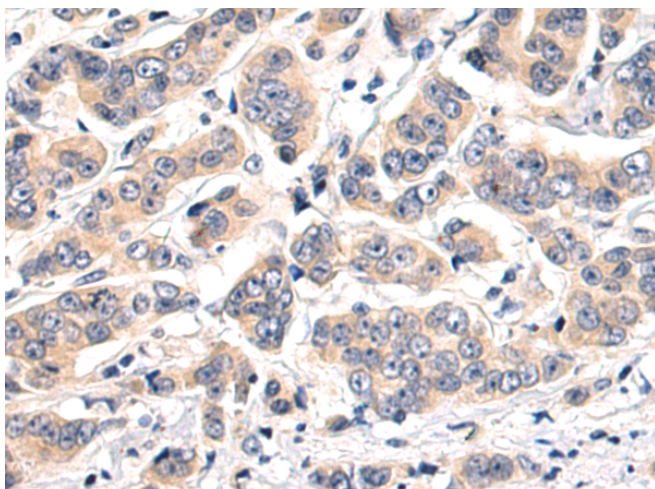
**纯化:** Antigen affinity purification

**种属反应性:** Human, Mouse

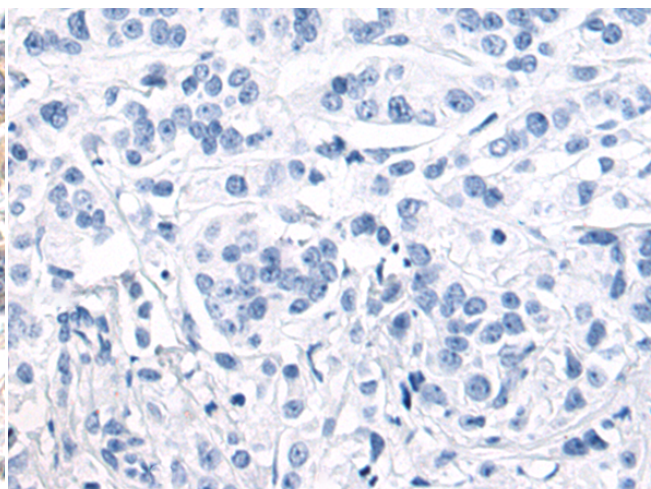
**成分:** PBS (without Mg<sup>2+</sup> and Ca<sup>2+</sup>), pH 7.4, 150 mM NaCl, 0.05% Sodium Azide and 40% glycerol

**研究领域:** Epigenetics and Nuclear Signaling

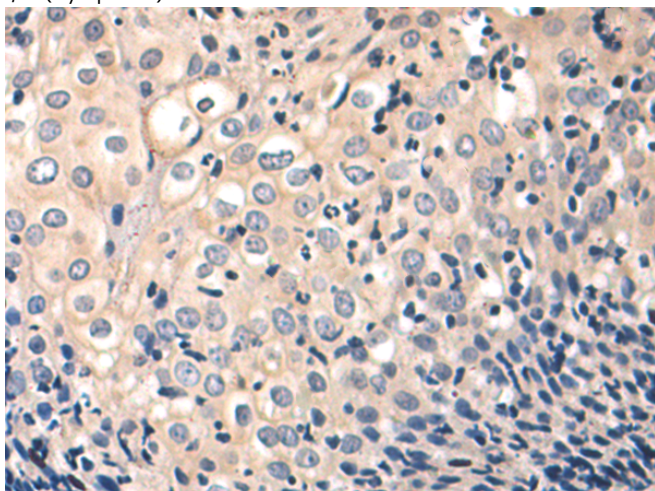
**储存和运输:** Store at -20°C. Avoid repeated freezing and thawing



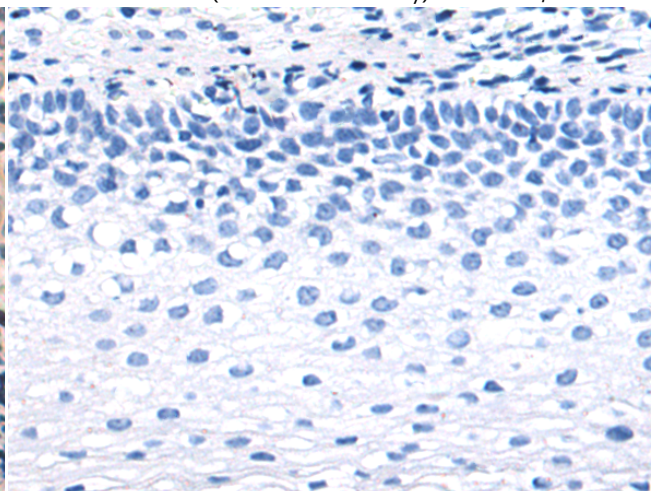
Immunohistochemistry analysis of paraffin embedded Human breast cancer tissue using 222429(RPL22L1 Antibody) at a dilution of 1/50(Cytoplasm).



In comparison with the IHC on the left, the same paraffin-embedded Human breast cancer tissue is first treated with the synthetic peptide and then with 222429(Anti-RPL22L1 Antibody) at dilution 1/50.



The image on the left is immunohistochemistry of paraffin-embedded Human tonsil tissue using 222429(Anti-RPL22L1 Antibody) at a dilution of 1/50.



In comparison with the IHC on the left, the same paraffin-embedded Human tonsil tissue is first treated with synthetic peptide and then with D264597(Anti-RPL22L1 Antibody) at dilution 1/50.



# Product Description

Pioneering GTPase and Oncogene Product Development since 2010

---