

## RPL15 RABBIT PAB

货号: S217781

产品全名: RPL15 兔多抗

基因符号 L15; EC45; DBA12; RPL10; RPLY10; RPYL10

**UNIPROT ID:** P61313 (Gene Accession - BC081565 )

**背景:** Ribosomes, the organelles that catalyze protein synthesis, consist of a small 40S subunit and a large 60S subunit. Together these subunits are composed of four RNA species and approximately 80 structurally distinct proteins. This gene encodes a member of the L15E family of ribosomal proteins and a component of the 60S subunit. This gene shares sequence similarity with the yeast ribosomal protein YL10 gene. Elevated expression of this gene has been observed in esophageal tumors and gastric cancer tissues, and deletion of this gene has been observed in a Diamond-Blackfan anemia (DBA) patient. As is typical for genes encoding ribosomal proteins, there are multiple processed pseudogenes of this gene dispersed through the genome.

**抗原:** Fusion protein of human RPL15

**经过测试的应用:** ELISA, IHC

**推荐稀释比:** IHC: 50-200; ELISA: 5000-10000

**种属反应性:** Rabbit

**克隆性:** Rabbit Polyclonal

**亚型:** Immunogen-specific rabbit IgG

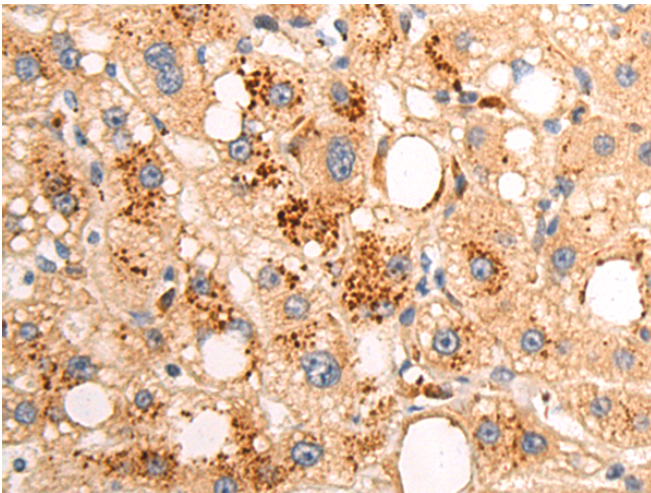
**纯化:** Antigen affinity purification

**种属反应性:** Human, Mouse, Rat

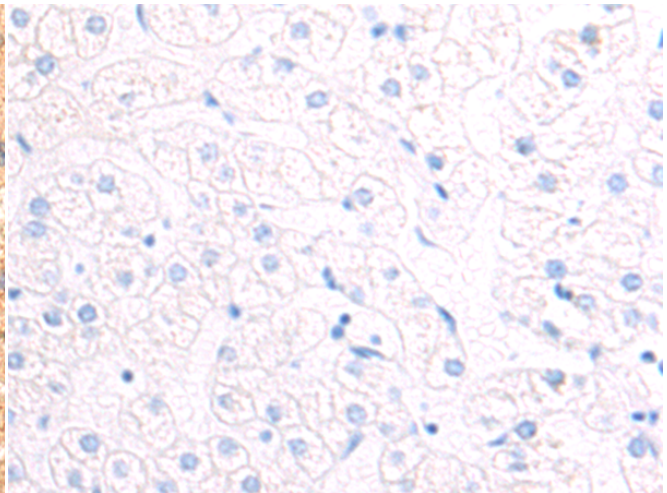
**成分:** PBS (without Mg<sup>2+</sup> and Ca<sup>2+</sup>), pH 7.4, 150 mM NaCl, 0.05% Sodium Azide and 40% glycerol

**研究领域:** Epigenetics and Nuclear Signaling, Cancer

**储存和运输:** Store at -20°C. Avoid repeated freezing and thawing



Immunohistochemistry analysis of paraffin embedded Human liver cancer tissue using 217781(RPL15 Antibody) at a dilution of 1/55(Cytoplasm).



In comparison with the IHC on the left, the same paraffin-embedded Human liver cancer tissue is first treated with the fusion protein and then with 217781(Anti-RPL15 Antibody) at dilution 1/55.