

## RPL13A RABBIT PAB

货号: S219010

产品全名: RPL13A 兔多抗

基因符号: L13A; TSTA1

**UNIPROT ID:** P40429 (Gene Accession - BC000514)

**背景:** Ribosomes, the organelles that catalyze protein synthesis, consist of a small 40S subunit and a large 60S subunit. Together these subunits are composed of 4 RNA species and approximately 80 structurally distinct proteins. This gene encodes a member of the L13P family of ribosomal proteins that is a component of the 60S subunit. The encoded protein also plays a role in the repression of inflammatory genes as a component of the IFN-gamma-activated inhibitor of translation (GAIT) complex. This gene is co-transcribed with the small nucleolar RNA genes U32, U33, U34, and U35, which are located in the second, fourth, fifth, and sixth introns, respectively. As is typical for genes encoding ribosomal proteins, there are multiple processed pseudogenes of this gene dispersed throughout the genome. Alternatively spliced transcript variants encoding multiple isoforms have been observed for this gene.

**抗原:** Fusion protein of human RPL13A

**经过测试的应用:** ELISA, WB, IHC

**推荐稀释比:** IHC: 50-300; WB: 1000-5000; ELISA: 5000-10000

**种属反应性:** Rabbit

**克隆性:** Rabbit Polyclonal

**亚型:** Immunogen-specific rabbit IgG

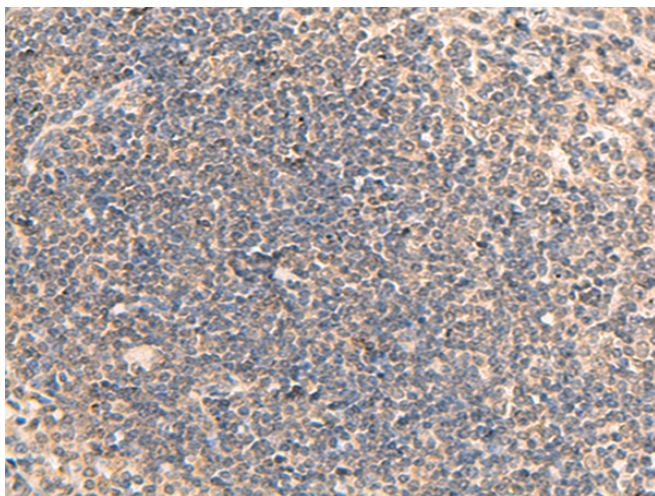
**纯化:** Antigen affinity purification

**种属反应性:** Human, Mouse, Rat

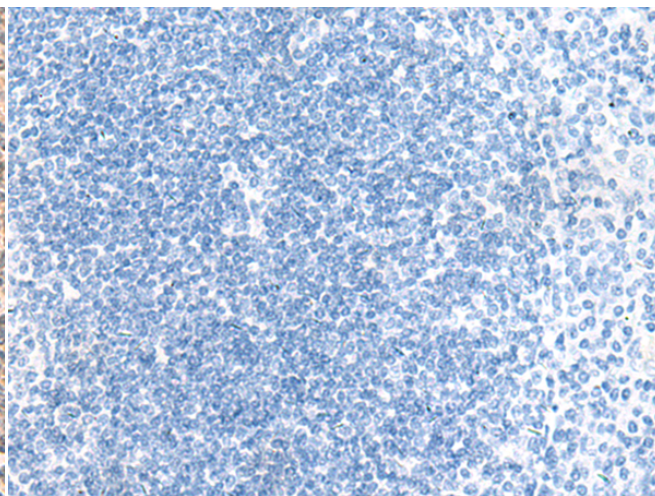
**成分:** PBS (without Mg<sup>2+</sup> and Ca<sup>2+</sup>), pH 7.4, 150 mM NaCl, 0.05% Sodium Azide and 40% glycerol

**研究领域:** Epigenetics and Nuclear Signaling

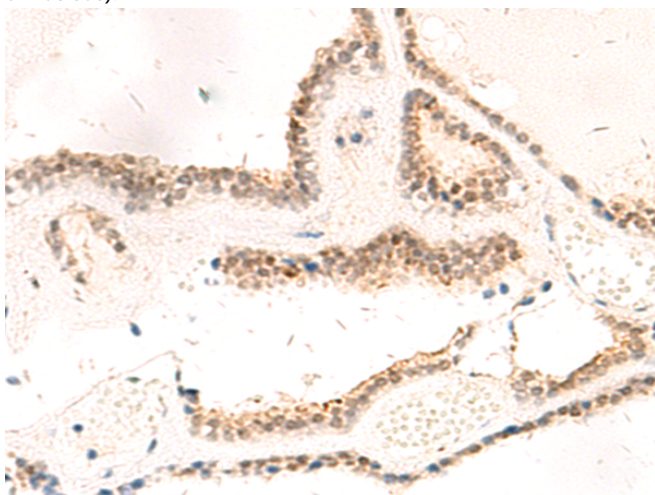
**储存和运输:** Store at -20°C. Avoid repeated freezing and thawing



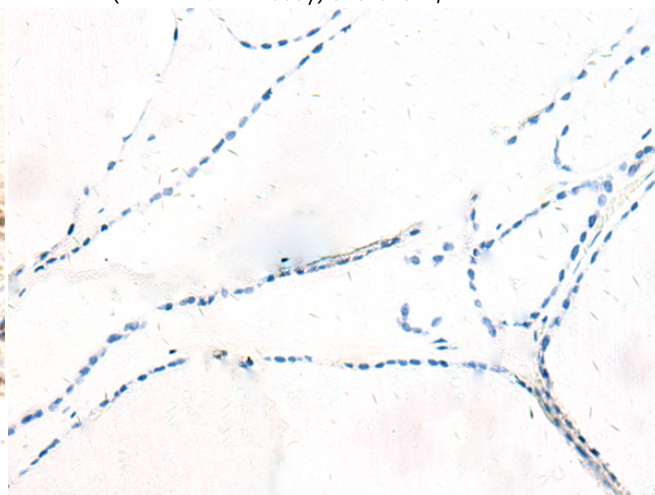
Immunohistochemistry analysis of paraffin embedded Human tonsil tissue using 219010(RPL13A Antibody) at a dilution of 1/95(Cytoplasm or Nucleus).



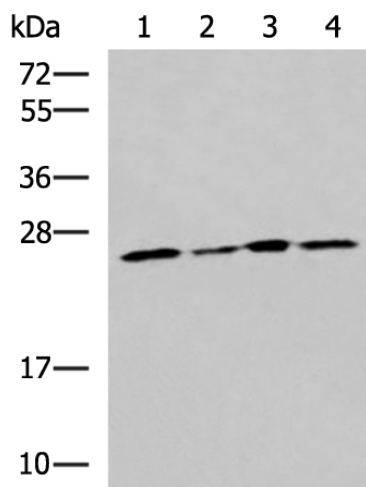
In comparison with the IHC on the left, the same paraffin-embedded Human tonsil tissue is first treated with the fusion protein and then with 219010(Anti-RPL13A Antibody) at dilution 1/95.



The image on the left is immunohistochemistry of paraffin-embedded Human thyroid cancer tissue using 219010(Anti-RPL13A Antibody) at a dilution of 1/95.



In comparison with the IHC on the left, the same paraffin-embedded Human thyroid cancer tissue is first treated with fusion protein and then with D225645(Anti-RPL13A Antibody) at dilution 1/95.



Gel: 12%SDS-PAGE, Lysate: 40 µg;  
 Lane 1-4: LOVO, Hela, A549 and HT29 cell lysates;  
 Primary antibody: 219010(RPL13A Antibody) at dilution 1/1600;  
 Secondary antibody: HRP-conjugated Goat anti rabbit IgG at 1/5000 dilution;  
 Exposure time: 30 seconds



# Product Description

Pioneering GTPase and Oncogene Product Development since 2010

---