

RPL10A RABBIT PAB

货号: S219268

产品全名: RPL10A 兔多抗

基因符号 L10A; CSA19; NEDD6; Csa-19

UNIPROT ID: P62906 (Gene Accession - BC006791)

背景: Ribosomes, the organelles that catalyze protein synthesis, consist of a small 40S subunit and a large 60S subunit. Together these subunits are composed of 4 RNA species and approximately 80 structurally distinct proteins. This gene encodes a ribosomal protein that is a component of the 60S subunit. The protein belongs to the LIP family of ribosomal proteins. It is located in the cytoplasm. The expression of this gene is downregulated in the thymus by cyclosporin-A (CsA), an immunosuppressive drug. Studies in mice have shown that the expression of the ribosomal protein L10a gene is downregulated in neural precursor cells during development. This gene previously was referred to as NEDD6 (neural precursor cell expressed, developmentally downregulated 6), but it has been renamed RPL10A (ribosomal protein 10a). As is typical for genes encoding ribosomal proteins, there are multiple processed pseudogenes of this gene dispersed through the genome.

抗原: Fusion protein of human RPL10A

经过测试的应用: ELISA, WB, IHC

推荐稀释比: IHC: 50-200; WB: 500-2000; ELISA: 5000-10000

种属反应性: Rabbit

克隆性: Rabbit Polyclonal

亚型: Immunogen-specific rabbit IgG

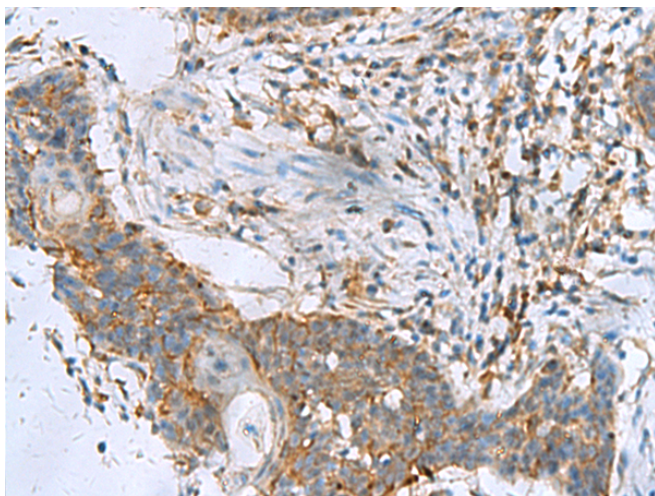
纯化: Antigen affinity purification

种属反应性: Human, Mouse, Rat

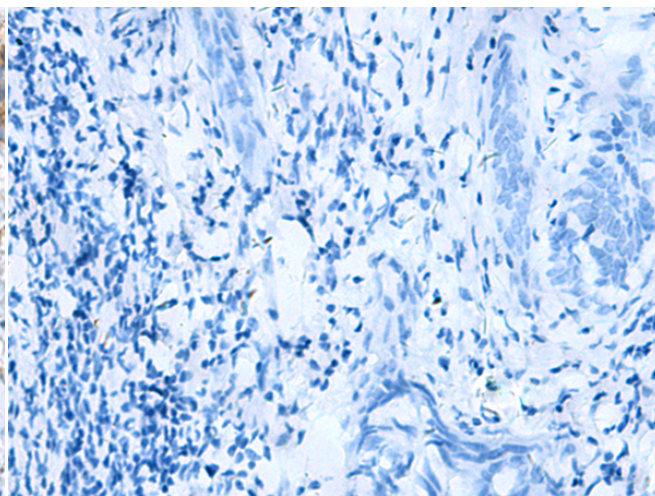
成分: PBS (without Mg²⁺ and Ca²⁺), pH 7.4, 150 mM NaCl, 0.05% Sodium Azide and 40% glycerol

研究领域: Epigenetics and Nuclear Signaling

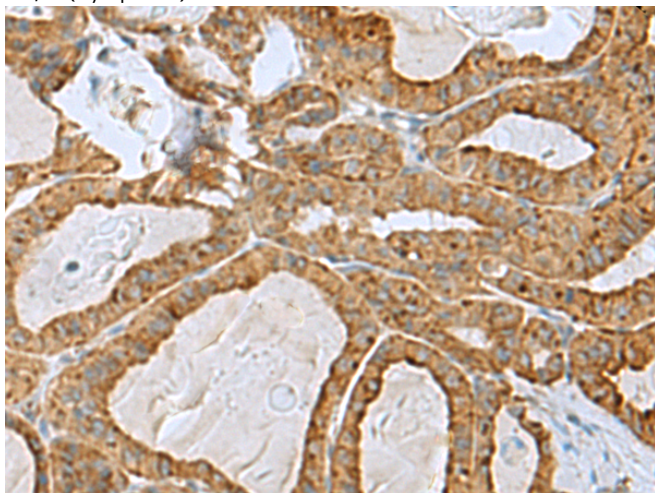
储存和运输: Store at -20°C. Avoid repeated freezing and thawing



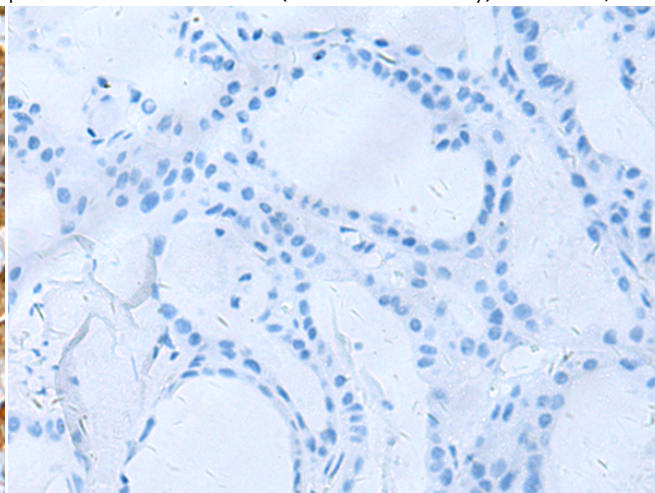
Immunohistochemistry analysis of paraffin embedded Human esophagus cancer tissue using 219268(RPL10A Antibody) at a dilution of 1/50(Cytoplasm).



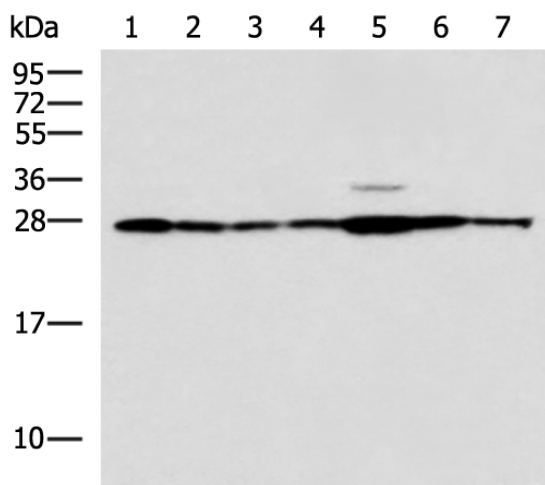
In comparison with the IHC on the left, the same paraffin-embedded Human esophagus cancer tissue is first treated with the fusion protein and then with 219268(Anti-RPL10A Antibody) at dilution 1/50.



The image on the left is immunohistochemistry of paraffin-embedded Human thyroid cancer tissue using 219268(Anti-RPL10A Antibody) at a dilution of 1/50.



In comparison with the IHC on the left, the same paraffin-embedded Human thyroid cancer tissue is first treated with fusion protein and then with D226158(Anti-RPL10A Antibody) at dilution 1/50.



Gel: 12%SDS-PAGE, Lysate: 40 µg;
 Lane 1-7: Rat liver tissue, Mouse kidney tissue, Mouse lung tissue, HUVEC, Jurkat, Hela, HepG2 cell lysates;
 Primary antibody: 219268(RPL10A Antibody) at dilution 1/700;
 Secondary antibody: HRP-conjugated Goat anti rabbit IgG at 1/5000 dilution;
 Exposure time: 7 seconds



Product Description

Pioneering GTPase and Oncogene Product Development since 2010
