

RPA32 RABBIT MAB

货号: N262844

产品全名: RPA32 兔单克隆抗体

基因符号 60S acidic ribosomal protein P1; AA409079; AI325195; AU020965; HSSB; ik:tdsubc_2g1; M(2)21C; MGC137236; OTTHUMP00000004008; p32; p34; RCJMB04_6d17 replication protein A2; 32kDa; REPA 2; REPA1; REPA2; Replication factor A protein 2; Replication protein A 32 kDa subunit; Replication protein A 32kDa subunit; Replication protein A 34 kDa subunit; Replication protein A; replication protein A1 (70kD); Replication Protein A2 (32kDa); Replication protein A2 32kD; Replication protein A2 32kDa; Replication protein A2; Replication protein A2; 32kDa; RF A; RF-A protein 2; Rf-A2; RFA; RFA2_HUMAN; RP A; RP-A p32; RP-A p34; RP21C; RPA 2; RPA 32; RPA; RPA2; RPA32; RPA34; RPA70; RplP1; RpP2; xx:tdsubc_2g1; zgc:109822.

UNIPROT ID: P15927

背景: As part of the heterotrimeric replication protein A complex (RPA/RP-A), binds and stabilizes single-stranded DNA intermediates, that form during DNA replication or upon DNA stress. It prevents their reannealing and in parallel, recruits and activates different proteins and complexes involved in DNA metabolism. Thereby, it plays an essential role both in DNA replication and the cellular response to DNA damage. In the cellular response to DNA damage, the RPA complex controls DNA repair and DNA damage checkpoint activation.

抗原: A synthetic peptide of human RPA32/RPA2

经过测试的应用: WB,IHC-P,IP

推荐稀释比: WB: 1/500-1/1000 IHC: 1/50-1/100 IP: 1/20

种属反应性: Rabbit

克隆性: Rabbit Monoclonal

克隆编号: R07-4D1

分子量: Calculated MW: 29 kDa; Observed MW: 29 kDa

亚型: IgG

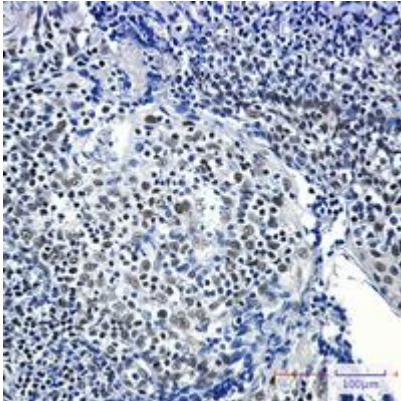
纯化: Affinity Purified

种属反应性: Human, Mouse and Rat,Hamster

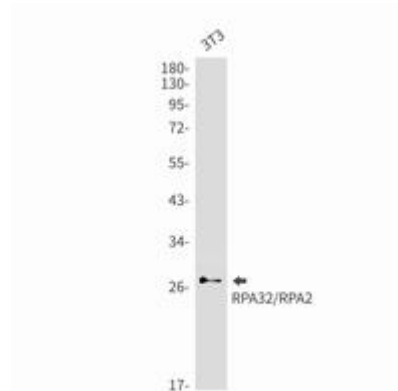
成分: PBS (without Mg²⁺ and Ca²⁺), pH 7.3 containing 50% glycerol, 0.5% BSA and 0.02% sodium azide

研究领域: Epigenetics and Nuclear Signaling

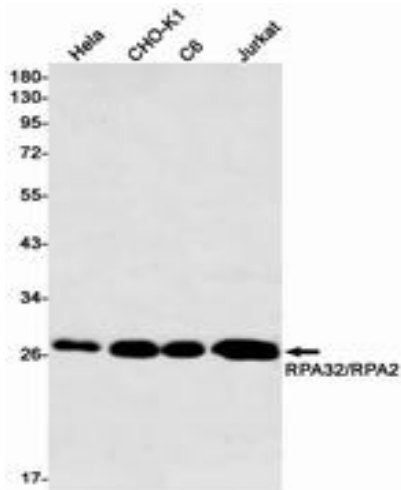
储存和运输: Store at -20°C. Avoid repeated freezing and thawing



Immunohistochemistry analysis of paraffin-embedded Human tonsil using RPA32/RPA2 antibody. High-pressure and temperature Sodium Citrate pH 6.0 was used for antigen retrieval.



Western blot analysis of RPA32/RPA2 in 3T3 lysates using RPA32 antibody.



Western blot analysis of RPA32/RPA2 in HeLa, CHO-K1, C6, Jurkat lysates using RPA32/RPA2 antibody.