

## RPA2 RABBIT PAB

货号: S217780

产品全名: RPA2 兔多抗

基因符号 REPA2; RPA32; RP-A p32; RP-A p34

**UNIPROT ID:** P15927 (Gene Accession - BC001630)

**背景:** Replication protein A 32 kDa subunit is a protein that in humans is encoded by the RPA2 gene. As part of the heterotrimeric replication protein A complex (RPA/RP-A), binds and stabilizes single-stranded DNA intermediates, that form during DNA replication or upon DNA stress. It prevents their reannealing and in parallel, recruits and activates different proteins and complexes involved in DNA metabolism. Thereby, it plays an essential role both in DNA replication and the cellular response to DNA damage.

**抗原:** Full length fusion 蛋白

**经过测试的应用:** ELISA, WB, IHC

**推荐稀释比:** IHC: 30-150; WB: 500-2000; ELISA: 2000-5000

**种属反应性:** Rabbit

**克隆性:** Rabbit Polyclonal

**亚型:** Immunogen-specific rabbit IgG

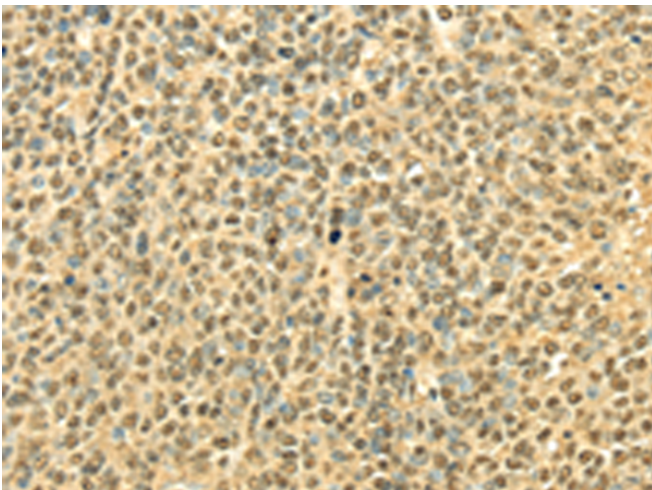
**纯化:** Antigen affinity purification

**种属反应性:** Human

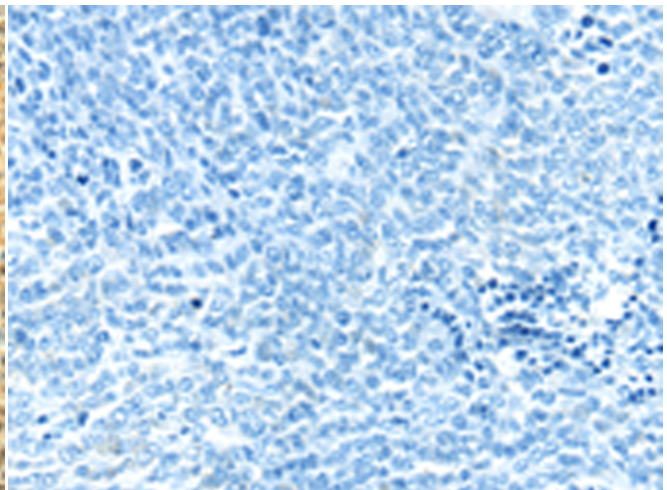
**成分:** PBS (without Mg<sup>2+</sup> and Ca<sup>2+</sup>), pH 7.4, 150 mM NaCl, 0.05% Sodium Azide and 40% glycerol

**研究领域:** Epigenetics and Nuclear Signaling

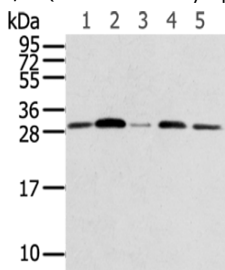
**储存和运输:** Store at -20°C. Avoid repeated freezing and thawing



Immunohistochemistry analysis of paraffin embedded Human ovarian cancer tissue using 217780(RPA2 Antibody) at a dilution of 1/40(Nucleus and Cytoplasm).



In comparison with the IHC on the left, the same paraffin-embedded Human ovarian cancer tissue is first treated with the fusion protein and then with 217780(Anti-RPA2 Antibody) at dilution 1/40.



Gel: 12%SDS-PAGE, Lysate: 40 µg;  
Lane 1-5: 231 cells, Jurkat cells, A549 cells, HUVEC cells, Hela cells;  
Primary antibody: 217780(RPA2 Antibody) at dilution 1/600;  
Secondary antibody: Goat anti rabbit IgG at 1/8000 dilution;  
Exposure time: 10 seconds