

RP2 RABBIT PAB

货号: S222448

产品全名: RP2 兔多抗

基因符号 XRP2; NME10; TBCCD2; NM23-H10; DELXp11.3

UNIPROT ID: O75695 (Gene Accession - NP_008846)

背景: The RP2 locus has been implicated as one cause of X-linked retinitis pigmentosa. The predicted gene product shows homology with human cofactor C, a protein involved in the ultimate step of beta-tubulin folding. Progressive retinal degeneration may therefore be due to the accumulation of incorrectly-folded photoreceptor or neuron-specific tubulin isoforms followed by progressive cell death.

抗原: Synthetic peptide of human RP2

经过测试的应用: ELISA, IHC

推荐稀释比: IHC: 50-200; ELISA: 5000-10000

种属反应性: Rabbit

克隆性: Rabbit Polyclonal

亚型: Immunogen-specific rabbit IgG

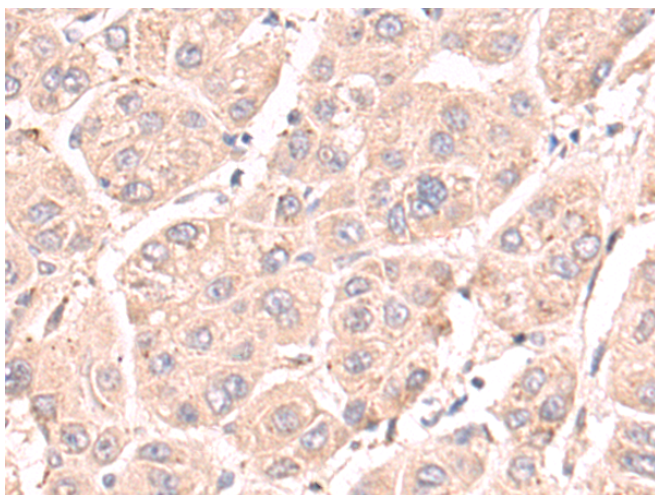
纯化: Antigen affinity purification

种属反应性: Human, Mouse

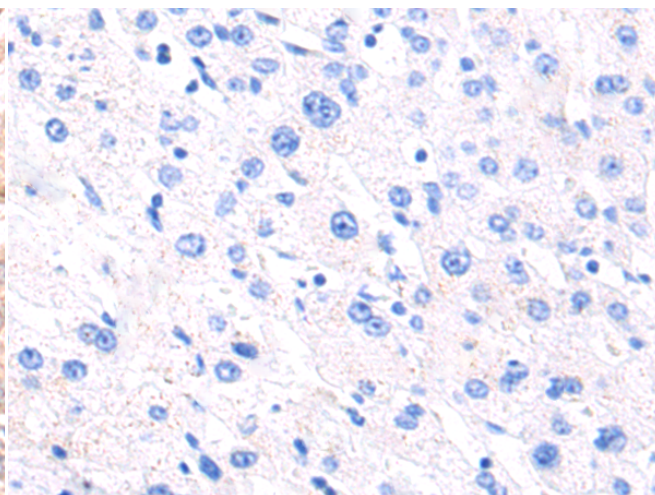
成分: PBS (without Mg²⁺ and Ca²⁺), pH 7.4, 150 mM NaCl, 0.05% Sodium Azide and 40% glycerol

研究领域: Neuroscience

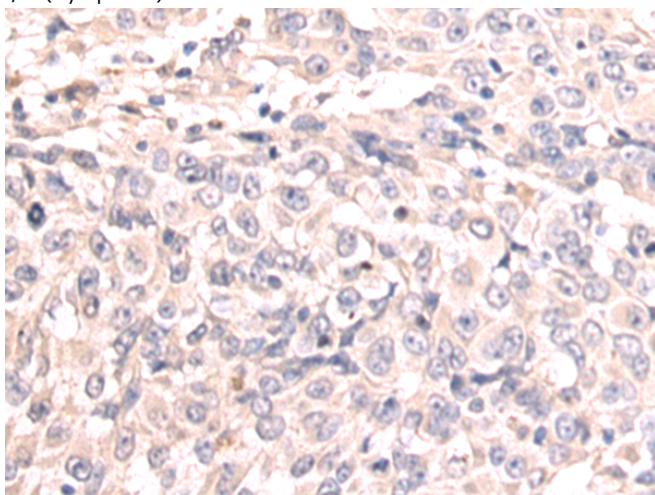
储存和运输: Store at -20°C. Avoid repeated freezing and thawing



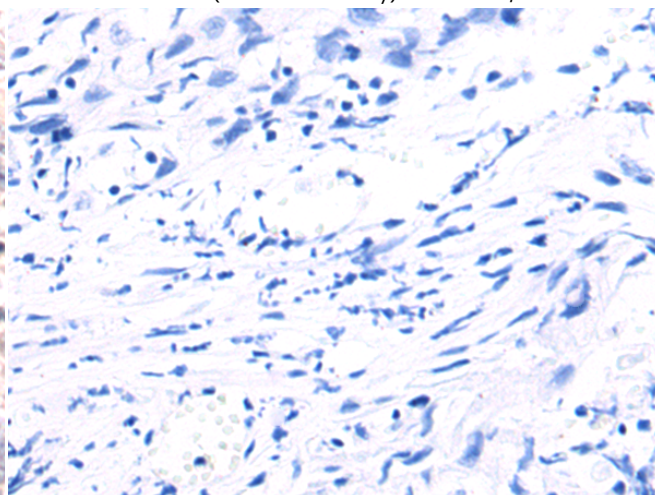
Immunohistochemistry analysis of paraffin embedded Human liver cancer tissue using 222448(RP2 Antibody) at a dilution of 1/50(Cytoplasm).



In comparison with the IHC on the left, the same paraffin-embedded Human liver cancer tissue is first treated with the synthetic peptide and then with 222448(Anti-RP2 Antibody) at dilution 1/50.



The image on the left is immunohistochemistry of paraffin-embedded Human bladder cancer tissue using 222448(Anti-RP2 Antibody) at a dilution of 1/50.



In comparison with the IHC on the left, the same paraffin-embedded Human bladder cancer tissue is first treated with synthetic peptide and then with D264623(Anti-RP2 Antibody) at dilution 1/50.



Product Description

Pioneering GTPase and Oncogene Product Development since 2010
