

## ROCK1 RABBIT PAB

货号: N225594

产品全名: ROCK1 兔多抗

基因符号 ROCK1; Rho-associated protein kinase 1; Renal carcinoma antigen NY-REN-35; Rho-associated; coiled-coil-containing protein kinase 1; Rho-associated; coiled-coil-containing protein kinase I; ROCK-I; p160 ROCK-1; p160ROCK

**UNIPROT ID:** Q13464

**背景:** ROCK1 Protein kinase which is a key regulator of actin cytoskeleton and cell polarity. Involved in regulation of smooth muscle contraction, actin cytoskeleton organization, stress fiber and focal adhesion formation, neurite retraction, cell adhesion and motility via phosphorylation of DAPK3, GFAP, LIMK1, LIMK2, MYL9/MLC2, PFN1 and PPP1R12A. Phosphorylates FHOD1 and acts synergistically with it to promote SRC-dependent non-apoptotic plasma membrane blebbing.

**抗原:** A synthesized peptide derived from human ROCK1

**经过测试的应用:** WB,IHC-P,ICC/IF,IP,FC

**推荐稀释比:** WB: 1/500-1/1000 IHC: 1/50-1/100 IF: 1/50-1/200 IP: 1/20 FC: 1/50-1/100

**种属反应性:** Rabbit

**克隆性:** Rabbit Polyclonal

**分子量:** Calculated MW: 158 kDa; Observed MW: 158 kDa

**亚型:** IgG

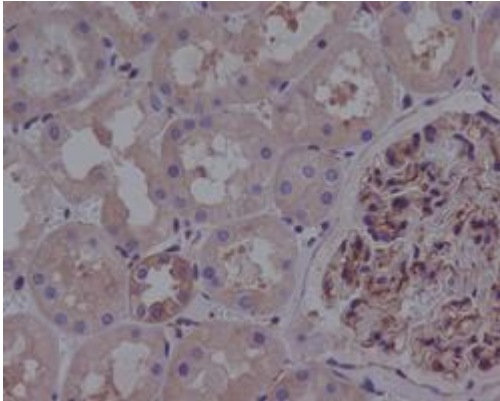
**纯化:** Affinity Chromatography

**种属反应性:** Human, Mouse and Rat

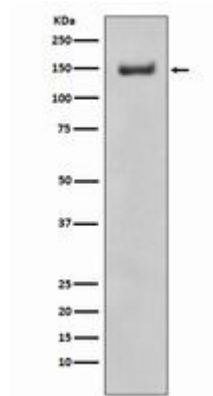
**成分:** PBS (without Mg<sup>2+</sup> and Ca<sup>2+</sup>), pH 7.3 containing 50% glycerol, 0.5% BSA and 0.02% sodium azide

**研究领域:** Signal Transduction

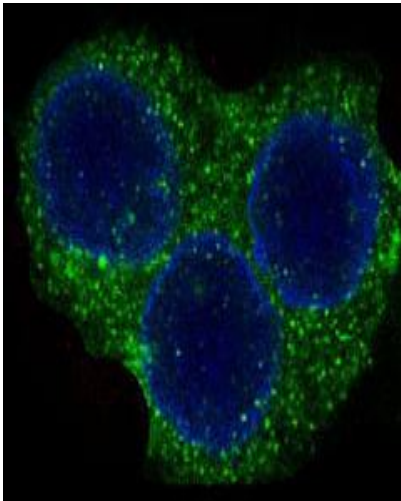
**储存和运输:** Store at -20°C. Avoid repeated freezing and thawing



Immunohistochemistry analysis of paraffin-embedded Human kidney using ROCK1 antibody. High-pressure and temperature Sodium Citrate pH 6.0 was used for antigen retrieval.



Western blot analysis of ROCK1 in Ramos lysates using ROCK1 antibody.



Immunofluorescence analysis of ROCK1 in HeLa using ROCK1 antibody.