

## ROCK1 RABBIT MAB

货号: N262843

产品全名: ROCK1 兔单克隆抗体

基因符号 ROCK1; Rho-associated protein kinase 1; Renal carcinoma antigen NY-REN-35; Rho-associated; coiled-coil-containing protein kinase 1; Rho-associated; coiled-coil-containing protein kinase I; ROCK-I; p160 ROCK-1; p160ROCK

**UNIPROT ID:** Q13464

背景: ROCK1 Protein kinase which is a key regulator of actin cytoskeleton and cell polarity. Involved in regulation of smooth muscle contraction, actin cytoskeleton organization, stress fiber and focal adhesion formation, neurite retraction, cell adhesion and motility via phosphorylation of DAPK3, GFAP, LIMK1, LIMK2, MYL9/MLC2, PFN1 and PPP1R12A. Phosphorylates FHOD1 and acts synergistically with it to promote SRC-dependent non-apoptotic plasma membrane blebbing.

抗原: A synthetic peptide of human ROCK1

经过测试的应用: WB,IP

推荐稀释比: WB: 1/500-1/1000 IP: 1/20

种属反应性: Rabbit

克隆性: Rabbit Monoclonal

克隆编号: R09-3D3

分子量: Calculated MW: 158 kDa; Observed MW: 158 kDa

亚型: IgG

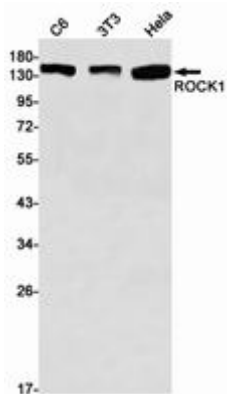
纯化: Affinity Purified

种属反应性: Human, Mouse and Rat

成分: PBS (without Mg<sup>2+</sup> and Ca<sup>2+</sup>), pH 7.3 containing 50% glycerol, 0.5% BSA and 0.02% sodium azide

研究领域: apoptosis - Caspase family

储存和运输: Store at -20°C. Avoid repeated freezing and thawing



Western blot analysis of ROCK1 in C6, 3T3, HeLa lysates using ROCK1 antibody.