

RNLS RABBIT PAB

货号: S220851

产品全名: RNLS 兔多抗

基因符号: C10orf59; RENALASE

UNIPROT ID: Q5VYX0 (Gene Accession - NP_001026879)

背景: Renalase is a flavin adenine dinucleotide-dependent amine oxidase that is secreted into the blood from the kidney.

抗原: Synthetic peptide of human RNLS

经过测试的应用: ELISA, WB, IHC

推荐稀释比: IHC: 50-200;WB: 500-2000;ELISA: 5000-10000

种属反应性: Rabbit

克隆性: Rabbit Polyclonal

亚型: Immunogen-specific rabbit IgG

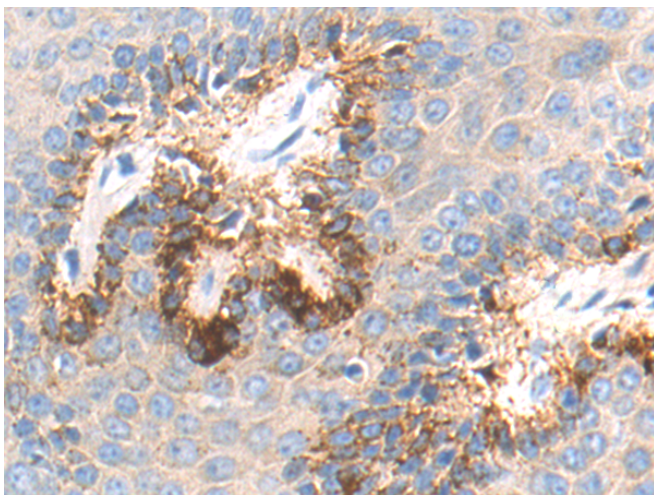
纯化: Antigen affinity purification

种属反应性: Human, Mouse, Rat

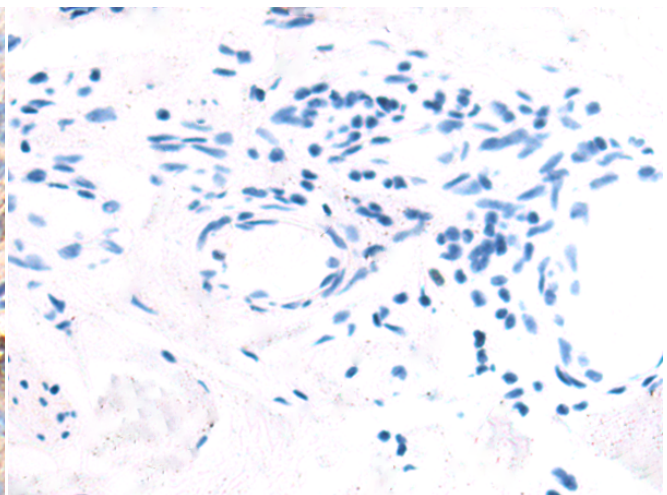
成分: PBS (without Mg²⁺ and Ca²⁺), pH 7.4, 150 mM NaCl, 0.05% Sodium Azide and 40% glycerol

研究领域: Neuroscience, Cardiovascular

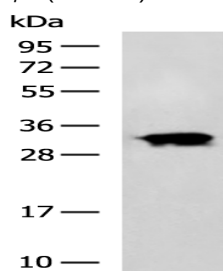
储存和运输: Store at -20°C. Avoid repeated freezing and thawing



Immunohistochemistry analysis of paraffin embedded Human breast cancer tissue using 220851(RNLS Antibody) at a dilution of 1/55(Secreted).



In comparison with the IHC on the left, the same paraffin-embedded Human breast cancer tissue is first treated with the synthetic peptide and then with 220851(Anti-RNLS Antibody) at dilution 1/55.



Gel: 12%SDS-PAGE, Lysate: 40 µg;

Lane: K562 cell lysate;

Primary antibody: 220851(RNLS Antibody) at dilution 1/800;

Secondary antibody: HRP-conjugated Goat anti rabbit IgG at 1/5000 dilution;

Exposure time: 2 minutes