

RNF217 RABBIT PAB

货号: S222210

产品全名: RNF217 兔多抗

基因符号: OSTL; IBRDCl; C6orf172; dJ84N20.1

UNIPROT ID: Q8TC41 (Gene Accession - NP_001273327)

背景: This protein encoded by this gene is a member of the RING1-IBR-RING24 (RBR) ubiquitin protein ligase family, and it belongs to a subfamily of these proteins that contain a transmembrane domain. This protein can interact with the HAX1 anti-apoptotic protein via its C-terminal RING finger motif, which suggests a role in apoptosis signaling. It is thought that deregulation of this gene can be a mechanism in leukemogenesis. Mutations in the region encoding the protein GXXXG motif, which appears to be necessary for protein self-association, have been found in human cancers. Alternative splicing of this gene results in multiple transcript variants.

抗原: Synthetic peptide of human RNF217

经过测试的应用: ELISA, IHC

推荐稀释比: IHC: 20-100; ELISA: 5000-10000

种属反应性: Rabbit

克隆性: Rabbit Polyclonal

亚型: Immunogen-specific rabbit IgG

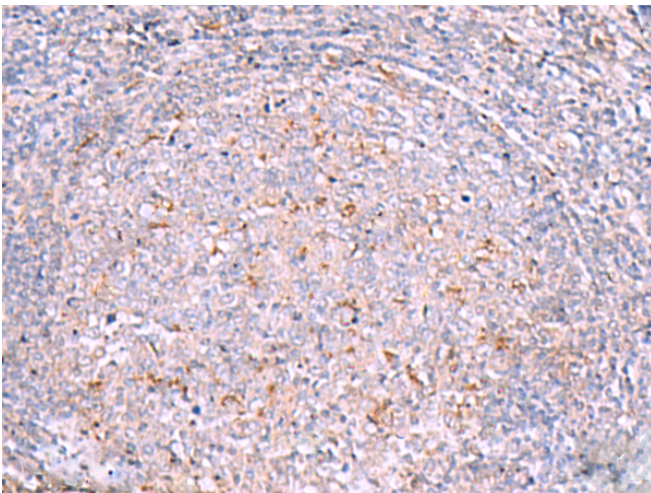
纯化: Antigen affinity purification

种属反应性: Human, Mouse

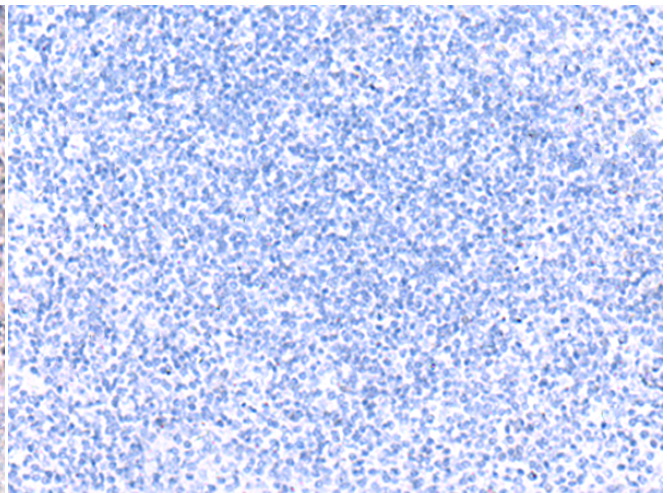
成分: PBS (without Mg²⁺ and Ca²⁺), pH 7.4, 150 mM NaCl, 0.05% Sodium Azide and 40% glycerol

研究领域: Epigenetics and Nuclear Signaling

储存和运输: Store at -20°C. Avoid repeated freezing and thawing



Immunohistochemistry analysis of paraffin embedded Human tonsil tissue using 222210(RNF217 Antibody) at a dilution of 1/30(Cytoplasm).



In comparison with the IHC on the left, the same paraffin-embedded Human tonsil tissue is first treated with the synthetic peptide and then with 222210(Anti-RNF217 Antibody) at dilution 1/30.