

## RNF214 RABBIT PAB

货号: S217776

产品全名: RNF214 兔多抗

基因符号

**UNIPROT ID:** Q8ND24 (Gene Accession - BC064581)

**背景:** RNF214 (RING finger protein 214) is a 703 amino acid protein that contains one RING-type zinc finger and is encoded by a gene that maps to human chromosome 11q23.3. Chromosome 11 houses over 1,400 genes and comprises nearly 4% of the human genome. Jervell and Lange-Nielsen syndrome, Jacobsen syndrome, Niemann-Pick disease, hereditary angioedema and Smith-Lemli-Opitz syndrome are associated with defects in genes that maps to chromosome 11.

**抗原:** Fusion protein of human RNF214

**经过测试的应用:** ELISA, WB, IHC

**推荐稀释比:** IHC: Oct-50;WB: 500-2000;ELISA: 2000-5000

**种属反应性:** Rabbit

**克隆性:** Rabbit Polyclonal

**亚型:** Immunogen-specific rabbit IgG

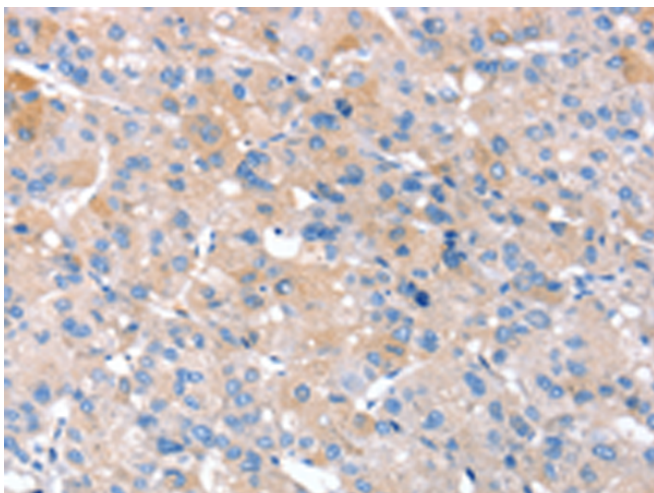
**纯化:** Antigen affinity purification

**种属反应性:** Human, Mouse

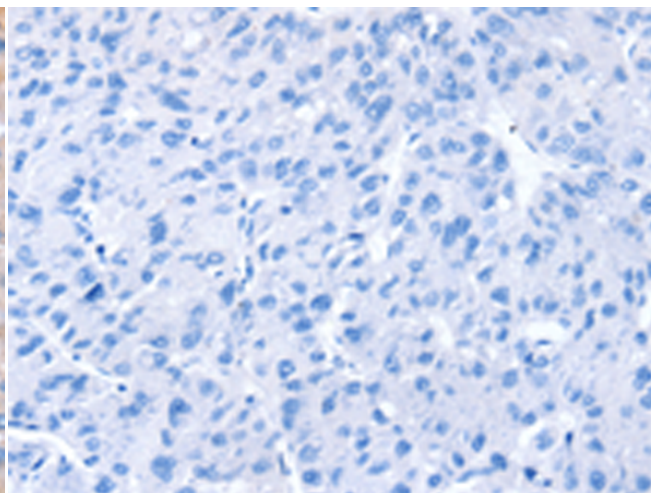
**成分:** PBS (without Mg<sup>2+</sup> and Ca<sup>2+</sup>), pH 7.4, 150 mM NaCl, 0.05% Sodium Azide and 40% glycerol

**研究领域:** Cell Biology

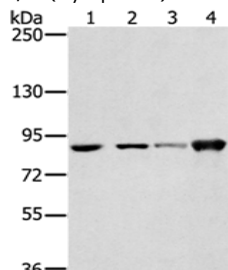
**储存和运输:** Store at -20°C. Avoid repeated freezing and thawing



Immunohistochemistry analysis of paraffin embedded Human liver cancer tissue using 217776(RNF214 Antibody) at a dilution of 1/20(Cytoplasm).



In comparison with the IHC on the left, the same paraffin-embedded Human liver cancer tissue is first treated with the fusion protein and then with 217776(Anti-RNF214 Antibody) at dilution 1/20.



Gel: 6%SDS-PAGE, Lysate: 40 µg;

Lane 1-4: 823 cells, PC3 cells, 231 cells, hepg2 cells;

Primary antibody: 217776(RNF214 Antibody) at dilution 1/250;

Secondary antibody: Goat anti rabbit IgG at 1/8000 dilution;

Exposure time: 20 seconds